

Figure 1: Bar Diagram

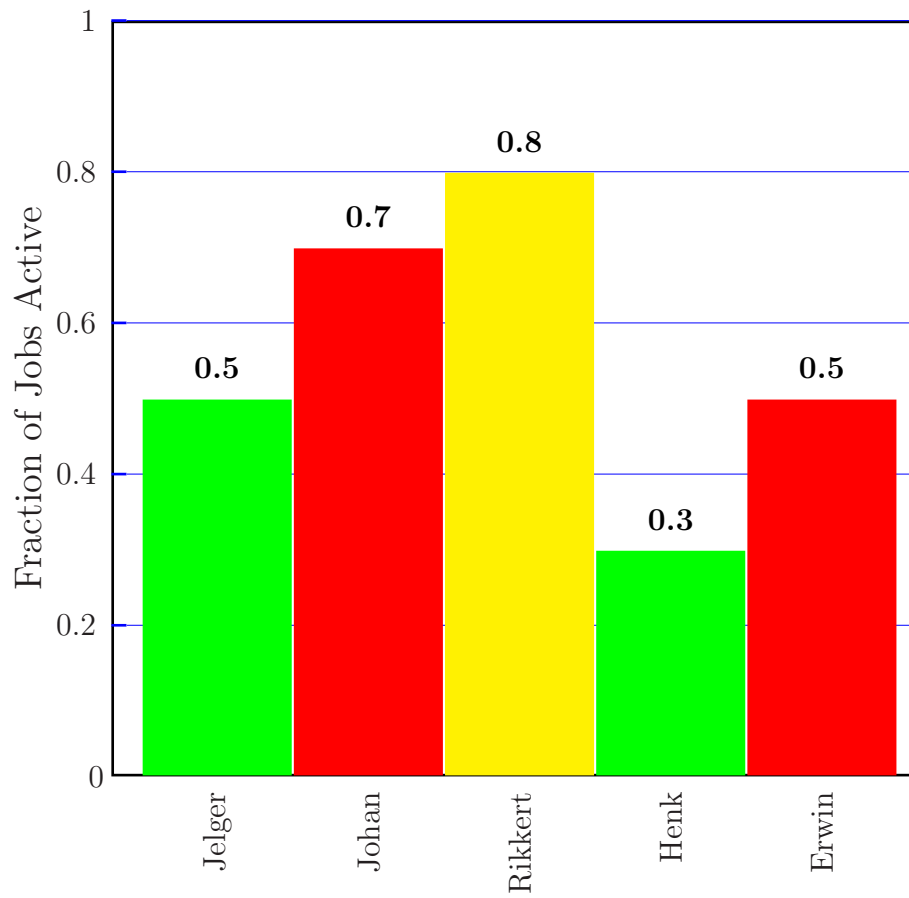
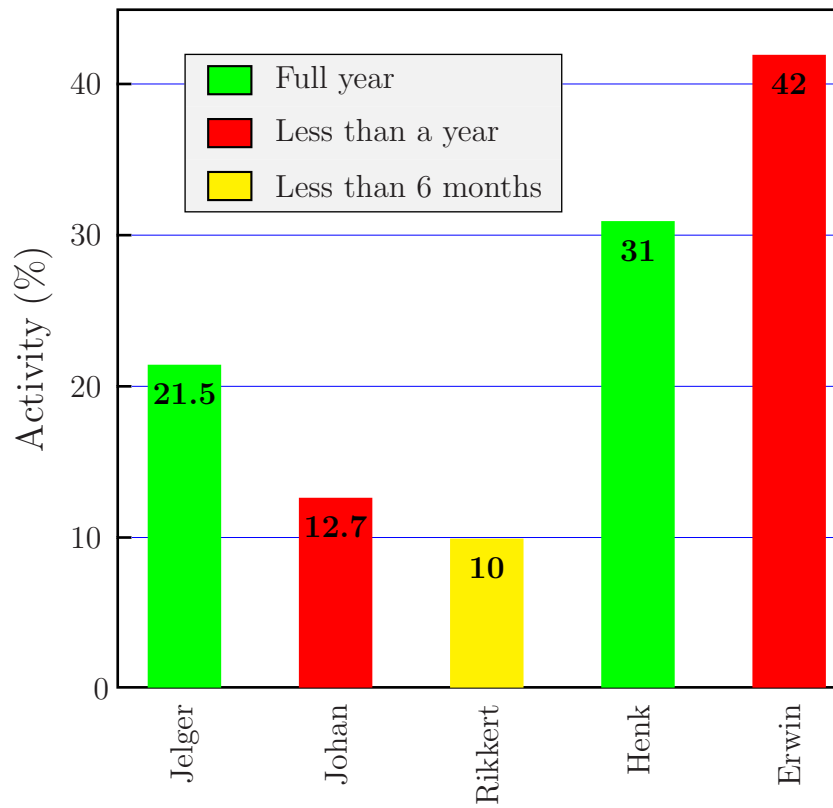


Figure 2: Bar Diagram - real numbers

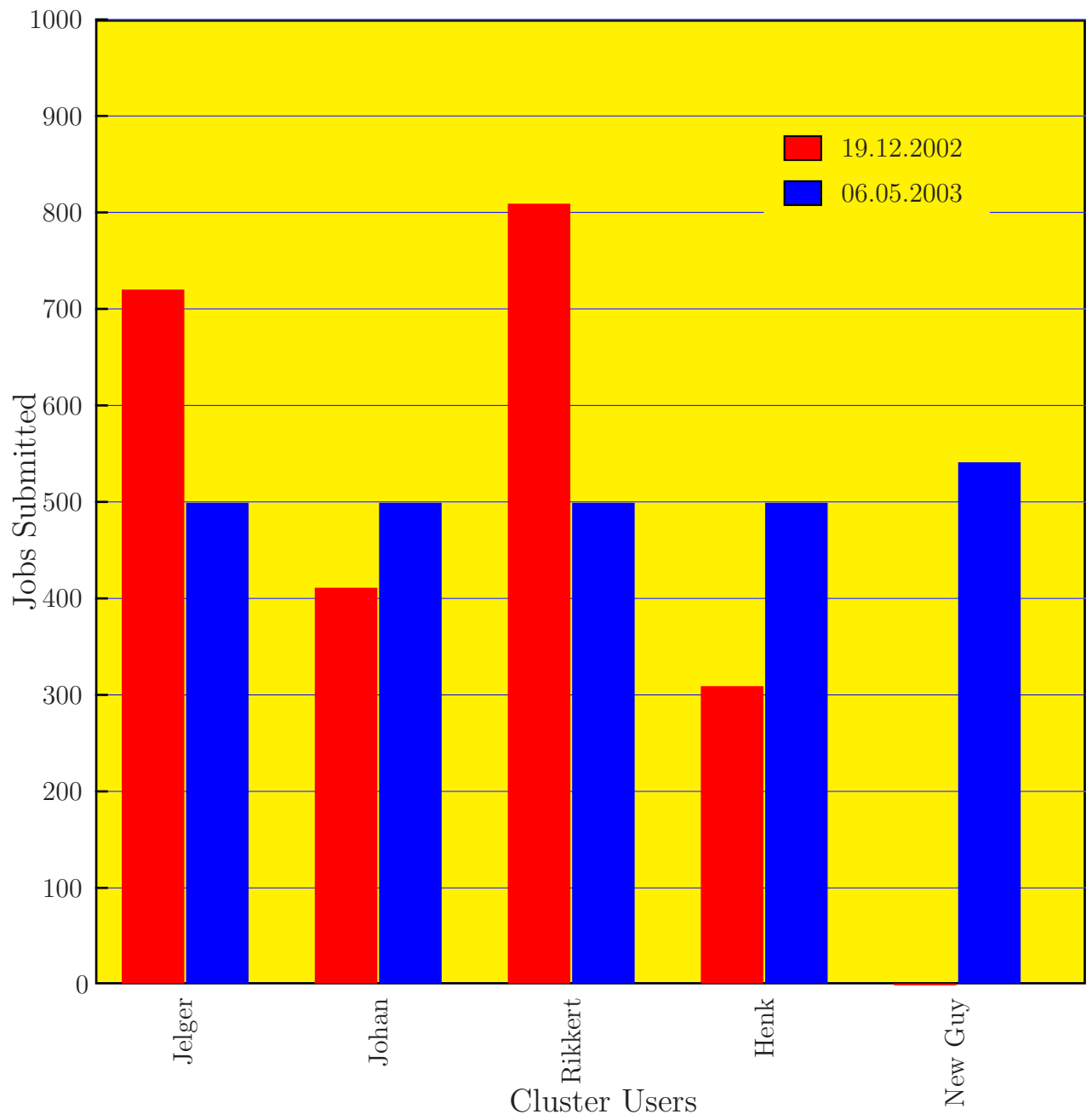
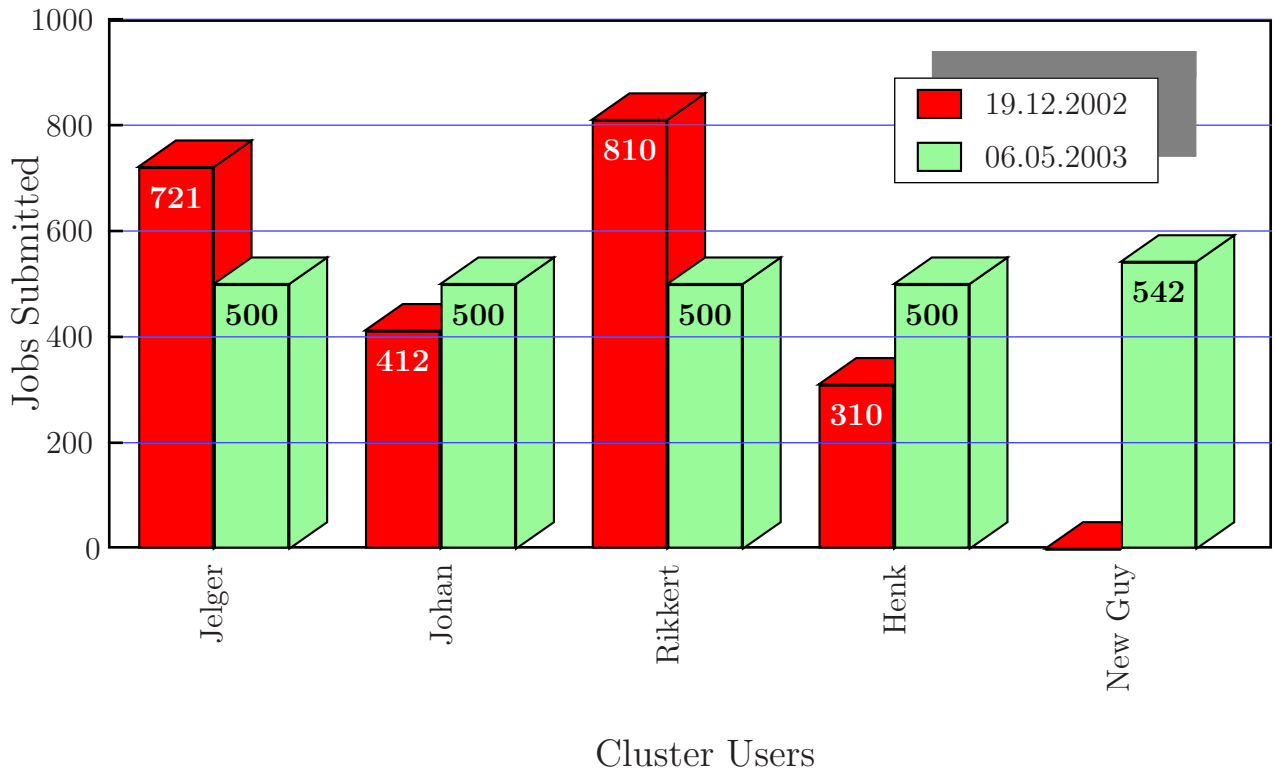


Figure 3: One more Bar Diagram



Changing only ActiveBarPrimitive parameter from barTDRect to barCylinder yields:

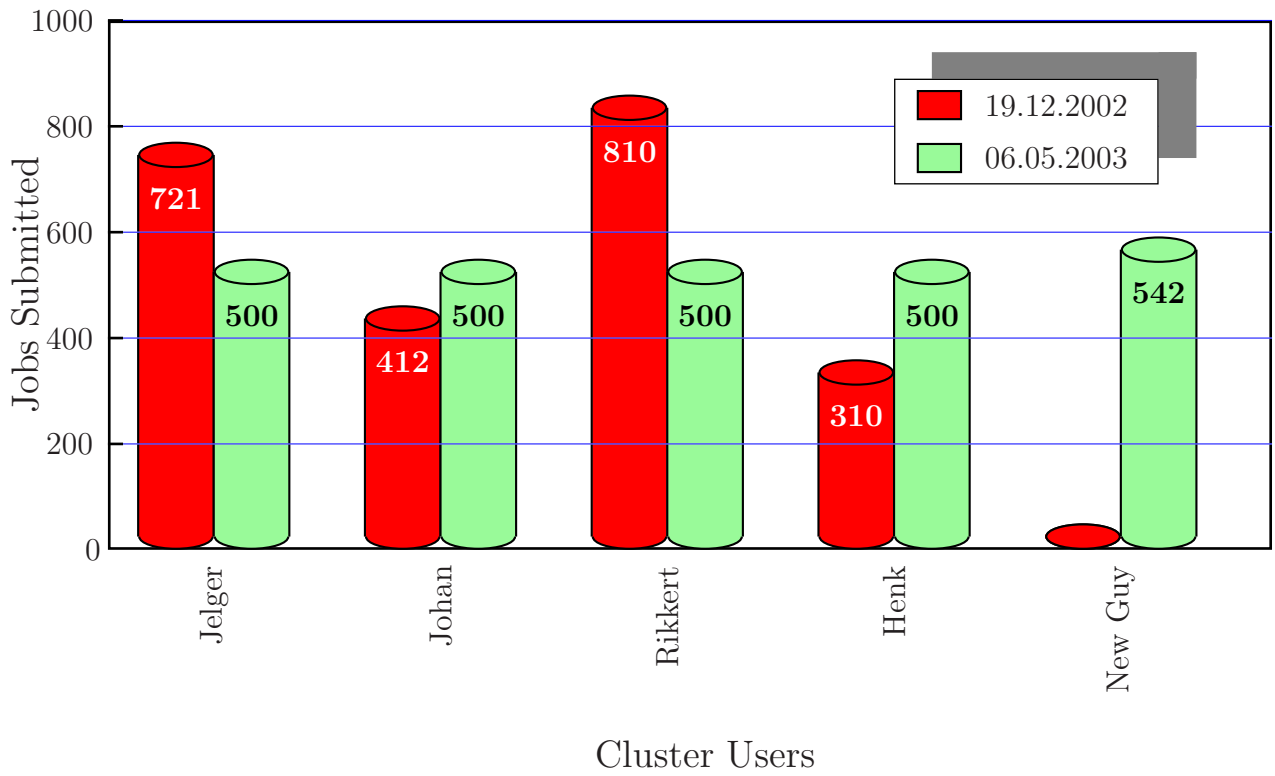


Figure 4: Bar Diagram and 3D item-bars

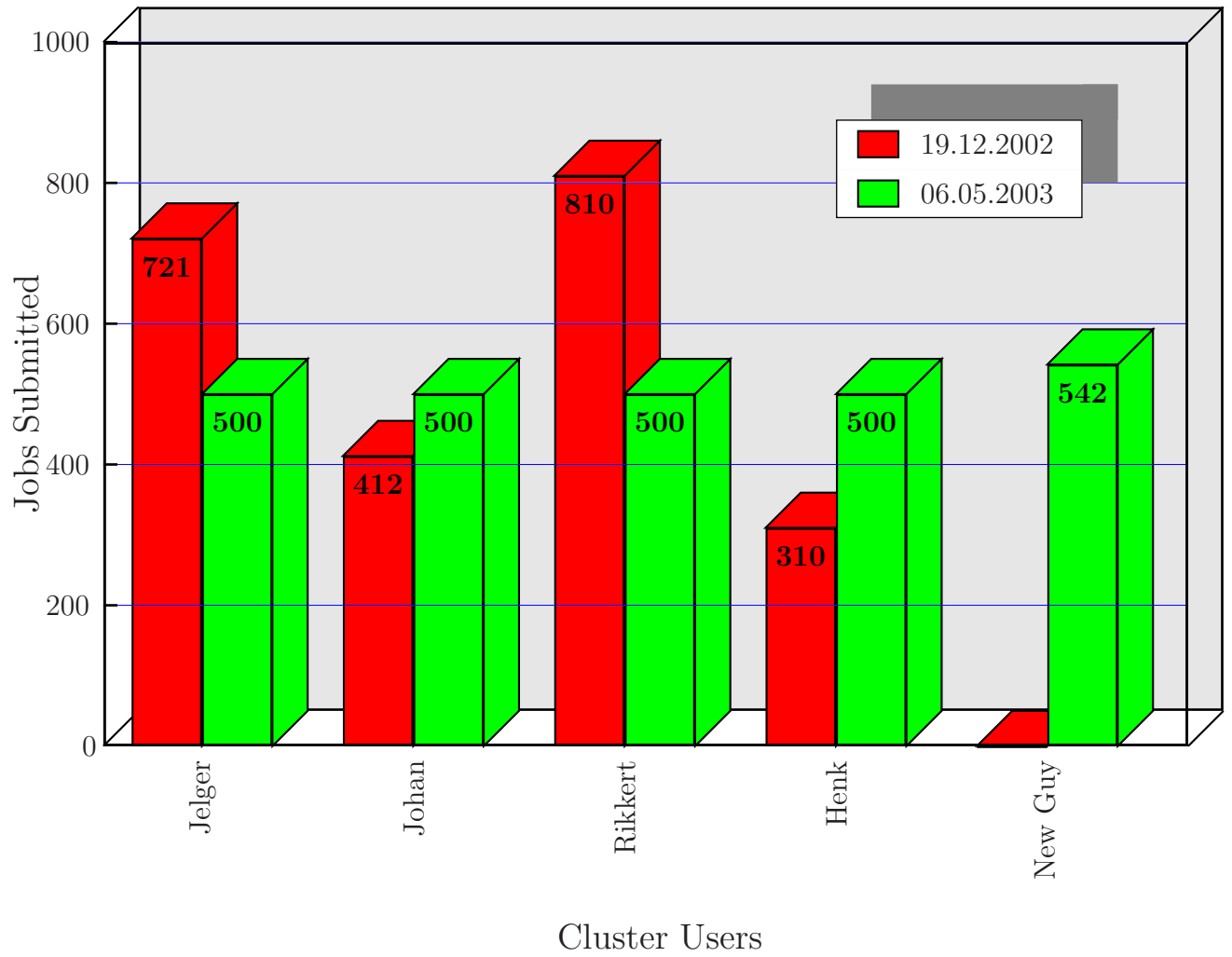


Figure 5: One more Bar Diagram in 3D

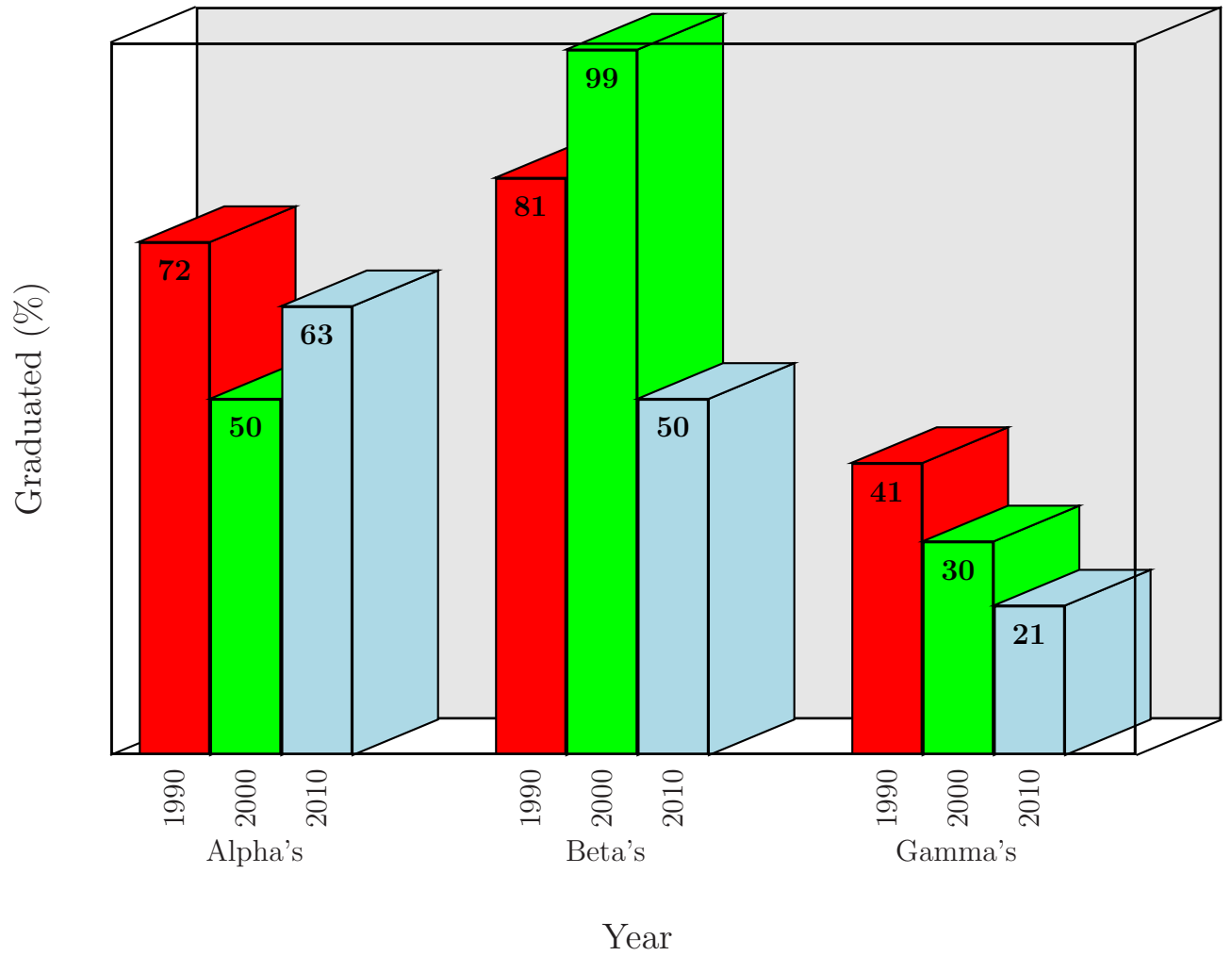


Figure 6: One more Bar Diagram in 3D

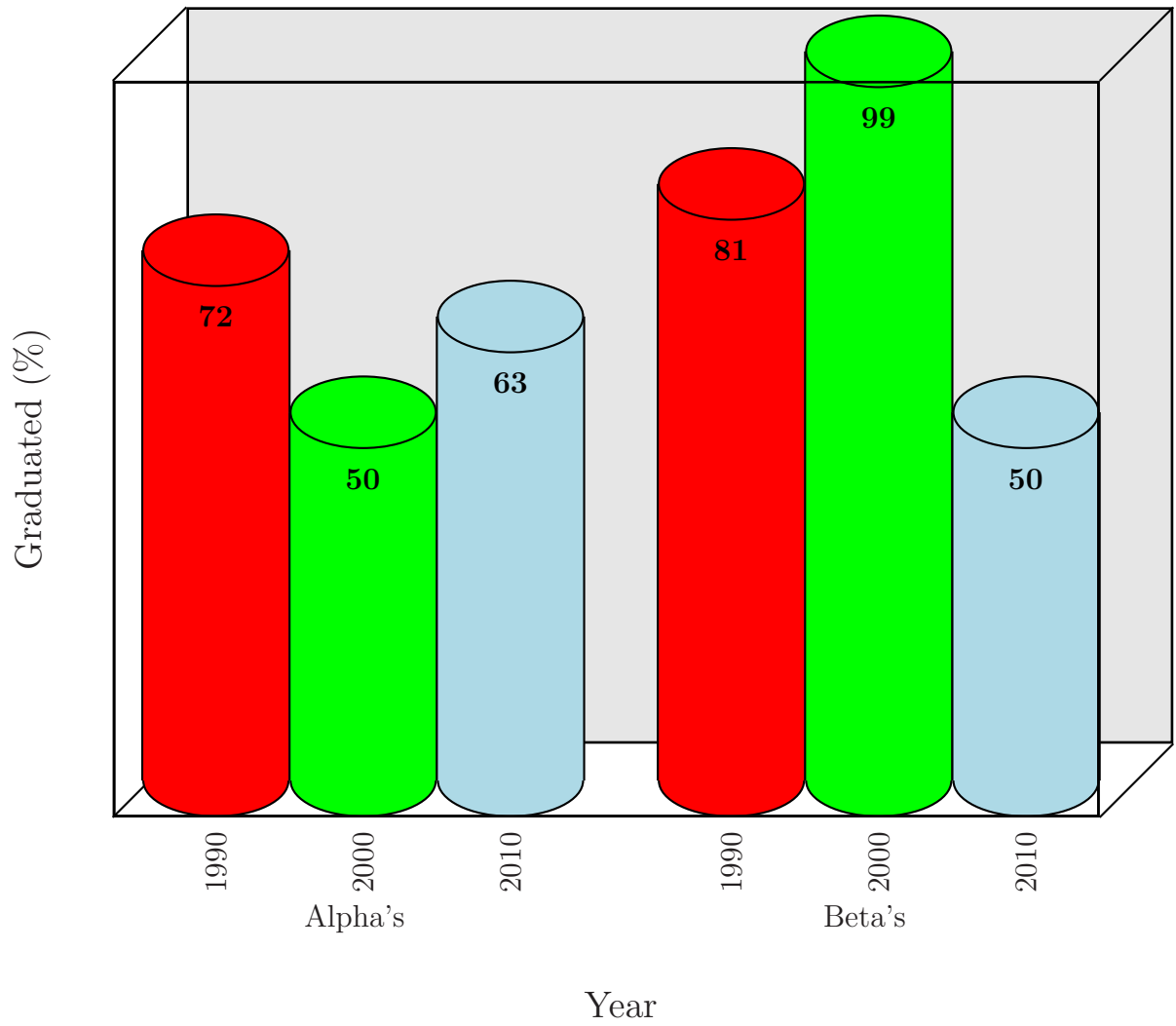


Figure 7: One more Bar Diagram in 3D (bar → cylinder)



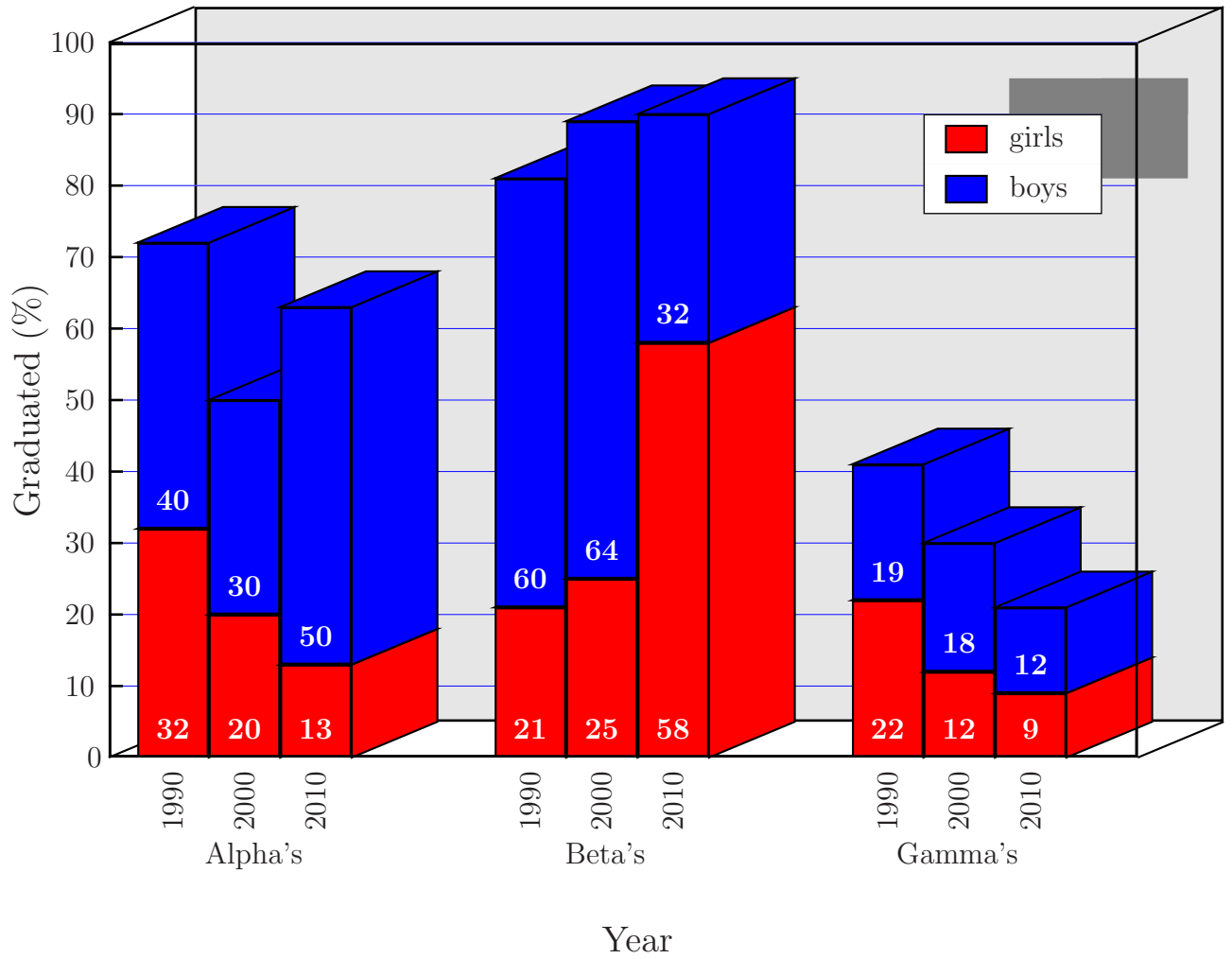


Figure 8: Bar Diagram with “top” items