

FLEXNET LICENSING END USER GUIDE

Version 10.8

Legal Notices

Copyright Notice

Copyright © 1996-2005 Macrovision Europe Ltd. and/or Macrovision Corporation. All Rights Reserved.

The information contained herein contains confidential information and proprietary trade secrets and is the property of Macrovision Corporation. Any use, copy, publication, distribution, display, modification, or transmission of the information in whole or in part in any form or by any means without the prior express written permission of Macrovision Corporation is strictly prohibited. Except when expressly provided by Macrovision Corporation in writing, possession of this information shall not be construed to confer any license or rights under any of Macrovision Corporation's intellectual property rights, whether by estoppel, implication, or otherwise.

ALL COPIES OF THE INFORMATION, IF ALLOWED BY MACROVISION CORPORATION, MUST DISPLAY THIS NOTICE OF COPYRIGHT AND OWNERSHIP IN FULL.

FLEXnet Licensing incorporates software developed by others and redistributed according to license agreement. See [“Third Party License Agreements”](#) for further details.

Trademarks

Macrovision®, Globetrotter®, SafeCast®, FLEXlm®, FLEXnet™, FLEXnet Publisher™, FLEXnet Manager™, FLEXnet Connector™, FLEXenabled™, and FLEXnet Certified™ are registered trademarks or trademarks of Macrovision Corporation in the United States of America and/or other countries.

All other brand and product names mentioned herein are the trademarks and registered trademarks of their respective owners.

Restricted Rights Legend

The software and documentation are "commercial items," as that term is defined at 48 C.F.R. §2.101, consisting of "commercial computer software" and "commercial computer software documentation," as such terms are used in 48 C.F.R. §12.212 or 48 C.F.R. §227.2702, as applicable. Consistent with 48 C.F.R. §12.212 or 48 C.F.R. §227.2702-1 through 227.2702-4, as applicable, the commercial computer software and commercial computer software documentation are being licensed to U.S. government end users (A) only as commercial items and (B) with only those rights as are granted to all other end users pursuant to the terms and conditions set forth in the Macrovision Corporation standard commercial agreement for this software. Unpublished rights reserved under the copyright laws of the United States of America.

Printed in the USA.

May 2005

Contents

Preface	ix
About This Manual	ix
Versions of FLEXnet Licensing	ix
Related Documents from Macrovision	ix
Typographic Conventions	x
Chapter 1 Introduction and Overview	11
Introduction to FLEXnet Licensing	11
How to Use This Manual	11
License Administrator	11
End User	12
FLEXnet Licensing Components	13
Served Licenses	13
Unserved Licenses	14
Component Overview	15
FLEXnet Licensing Components Shipped by Your Vendor	17
The License Request Process	18
Configuring FLEXnet Licensing	19
Getting Started Checklist	19
Installing FLEXenabled Software	19
Notes for End Users	21
Chapter 2 License File Basics	23
Specifying Location of the License File	23
Setting the Path with an Environment Variable	24
License File Format Overview	25
Types of License Files	26
Floating (Concurrent) Licenses	26
Node-Locked Licenses	27
Mixed Node-Locked and Floating Licenses	27
Chapter 3 Managing Licenses from Multiple Vendors	29
Overview of Multiple License Management Strategies	29
Multiple Machines	30

One Machine with Multiple License Server Systems	31
One Machine with One License Server System and Multiple License Files	32
Managing Multiple License Files	33
Additional Considerations	34
Combining license files	34
Version Component Compatibility.....	37
Chapter 4 Selecting License Server Machines	39
Resources Used by the Server	39
Sockets	39
CPU Time.....	39
Disk Space	40
Memory	40
Network Bandwidth	40
Remote Mounted Disks	40
Redundant License Server Systems	41
Redundancy via License-File List	41
Three-Server Redundancy	42
Comparing Three-Server to License-File List	42
Counted vs. Uncounted Licenses	43
.....	43
Chapter 5 The Options File	45
Creating an Options File	45
Options File Syntax	46
BORROW_LOW WATER.....	50
DEBUGLOG	50
EXCLUDE	51
EXCLUDE_BORROW	51
EXCLUDEALL	52
FQDN_MATCHING	52
GROUP.....	54
GROUPCASEINSENSITIVE	54
HOST_GROUP	55
INCLUDE.....	55
INCLUDE_BORROW.....	56
INCLUDEALL.....	56
LINGER	57
MAX.....	57
MAX_BORROW_HOURS	58
MAX_OVERDRAFT.....	58
NOLOG	59
REPORTLOG.....	59

RESERVE	60
TIMEOUT	61
TIMEOUTALL	61
How the Vendor Daemon Uses the Options File	61
Rules of Precedence in Options Files	62
Options File Examples	62
Simple Options File Example.....	62
Limiting Access for Multiple Users	63
EXCLUDE Example	64
INCLUDE Example	64
Chapter 6 The License Server Manager	65
lmgrd Command-Line Syntax	65
Starting the License Server Manager on UNIX Platforms	66
Manually.....	67
Automatically	67
Starting the License Server Manager on Windows	68
Manually from the Command Line	68
Configuring the License Server Manager as a Windows Service	69
Manually from LMTOOLS	69
Automatically at System Start Up	71
Chapter 7 License Administration Tools	73
Running Administration Tools	74
Universal lmutil Arguments	74
lmborrow	75
lmdiag	78
lmdown	79
lmhostid	80
lminstall	81
lmnewlog	82
lmpath	83
lmremove	84
lmreread	85
lmstat	86
lmswitch	88
lmswitchr	89
lmver	90
License Administration Tools—LMTOOLS for Windows	90
Configuration Using License File.....	91
Configuration Using Services.....	91

Chapter 8 Mobile Licensing	93
Node-Locked to a Laptop Computer	93
Node-locked to a FLEXid (Windows Only)	93
Node-Locked to a FLEXid with FLOAT_OK (Windows Only)	94
Initiating FLEXid with FLOAT_OK	94
Returning a FLEXid with FLOAT_OK License	95
FLEXid with FLOAT_OK Example	95
License Borrowing with BORROW	96
Initiating License Borrowing	96
Borrowing a License.	97
Support for License Borrowing	98
Node-locked to a User Name	99
Fulfilled from a Prepaid License Pool	99
Appendix A Hostids for FLEXnet Licensing-Supported Platforms	101
Hostid Formats	101
FLEXnet Licensing Hostids	101
Special FLEXnet Licensing Hostids	103
Appendix B License File Format	105
License File Syntax	106
Sample License File	106
SERVER Lines	106
VENDOR Lines	109
USE_SERVER Line	111
FEATURE/INCREMENT Lines	111
PACKAGE Lines	116
UPGRADE Lines	119
Decimal Format	119
License File Order	120
Appendix C Troubleshooting Guide	121
General Troubleshooting Hints	121
FLEXLM_DIAGNOSTICS	122
Level 1 Content	122
Level 2 Content	122
Level 3 Content (v6.0+ only)	123
Appendix D FLEXnet Licensing Environment Variables	125
How to Set Environment Variables	125
Registry.	125
Precedence	125
Environment Variables	125

Appendix E FLEXnet Licensing Error Codes	129
Error Message Format	129
Format 1 (short):	129
Format 2 (long—version 6.0+):	129
Error Code Descriptions	130
Appendix F The Report Log File	139
Managing Report Log Output	139
Enabling Report Log Output for a Vendor Daemon	140
Redirecting Report Log Output for a Vendor Daemon	140
Appendix G The Debug Log File	141
Managing Debug Log Output	141
Capturing Debug Log Output for a License Server System	141
Capturing Debug Log Output for a Particular Vendor Daemon	141
Redirecting Debug Log Output for a Running Vendor Daemon	142
Limiting Debug Log Output for a Vendor Daemon	142
Debug Log Messages	142
Informational Messages	143
Configuration Problem Messages	145
Daemon Software Error Messages	146
Appendix HIPv6 Support in FLEXnet Licensing	147
FLEXnet Licensing IPv6 Support	147
Using IPv6 Addresses in the Options File	148
Appendix I FLEXnet Licensing Versions	151
Version Compatibility with FLEXnet Licensing Components	151
How to Tell the License File Version	151
Version Summary	152
Third Party License Agreements	156
Index	161

Preface

Welcome to FLEXnet Licensing, the *de facto* standard network licensing system used by over 2000 leading software vendors to control the use of their software products. FLEXnet Licensing is a part of FLEXnet Publisher. If you are a system administrator or end user, chances are one or more of the products currently on your network is FLEXenabled.

About This Manual

This manual explains FLEXnet Licensing for administrators and end users and describes how to use the tools which are part of the standard FLEXnet Licensing distribution kit from your vendor.

Keep in mind that certain topics (such as password encryption) are vendor-specific and proprietary so they are not documented in any detail. Also, because FLEXnet Licensing does not enforce a particular licensing strategy, each vendor's implementation has subtle differences. If you do not find out what you need to know here, contact your vendor's technical support group.

Versions of FLEXnet Licensing

This manual covers features of interest to license administrators and end users of FLEXnet Licensing v10.8 and FLEXlm versions 5.0 through 9.3. The text presents FLEXnet Licensing v10.8 behavior and functionality. Differing behavior and functionality, if any, between the current and past versions for a particular feature is noted at the end of the its section. Additionally, [Appendix I, "FLEXnet Licensing Versions,"](#) covers version differences in detail.

Related Documents from Macrovision

The *FLEXnet Licensing Programming and Reference Guide* is for programmers responsible for incorporating FLEXnet Licensing into their products.

Typographic Conventions

The following typographic conventions are used in this manual:

- The first time a new term is used it is presented in *italics*.
- Commands and path, file, and environment variable names are presented in a `fixed_font`.
- Other variable names are in an *italic_fixed_font*.
- API function calls are in a sans-serif font.

Introduction and Overview

1

This chapter explains the basics of floating (network) licensing and gives a quick overview of the FLEXnet Licensing components. It explains where license administrators have control and where end users have control. “[Getting Started Checklist](#)” tells both license administrators and end users how to start managing FLEXnet Licensing.

Introduction to FLEXnet Licensing

FLEXnet Licensing is a member of the FLEXnet Publisher family of products. It is the most popular licensing system used in the software industry. FLEXnet Licensing is best known for its ability to allow software licenses to be available (or float) anywhere on a network, instead of being tied to specific machines. Floating licensing benefits both users and license administrators. Users make more efficient use of fewer licenses by sharing them on the network. License administrators control who uses the FLEXenabled application and the machine(s) where the licenses are available. See “[Types of License Files](#)” for details about the different licensing models supported by FLEXnet Licensing.

How to Use This Manual

This manual is written for two different audiences:

- Administrators of FLEXnet licenses and license server systems
- End users of FLEXenabled applications

License Administrator

If you are a license administrator, read these chapters:

Chapter:	Explains:
Preface	Overview of this manual.
Chapter 1, “Introduction and Overview”	FLEXnet Licensing basics: license server manager and vendor daemons; the license file; configuring FLEXnet Licensing; the license request process.

Chapter:	Explains:
Chapter 2, “License File Basics”	License file basics; setting the path at start-up; different types of licensing policies.
Chapter 3, “Managing Licenses from Multiple Vendors”	Using license files from multiple software vendors.
Chapter 4, “Selecting License Server Machines”	Resources required by the servers; multiple servers; quorums; redundant license server systems.
Chapter 5, “The Options File”	Creating and editing the options file.
Chapter 6, “The License Server Manager”	Using the license server manager, <code>lmgrd</code> .
Chapter 7, “License Administration Tools”	Managing FLEXnet Licensing using Macrovision-supplied utilities.
Chapter 8, “Mobile Licensing”	Licensing to allow working on a computer disconnected from the license server system.

In addition, refer to:

- [Appendix B, “License File Format”](#)
- [Appendix C, “Troubleshooting Guide”](#)

End User

If you are an end user, read these chapters:

Chapter:	Explains:
Preface	Overview of this manual.
Chapter 1, “Introduction and Overview”	FLEXnet Licensing basics: license and vendor daemons; the license file; the license request process.
Chapter 2, “License File Basics”	License file basics; setting the path at start-up; different types of licensing policies.
Chapter 8, “Mobile Licensing”	Licensing to allow working on a computer disconnected from the license server system.

In addition, refer to:

- [Appendix C, “Troubleshooting Guide”](#)

FLEXnet Licensing Components

FLEXnet Licensing components are organized based on the license model used by your software vendor. License models are classified according to their requirement for a license server system:

- Licenses are served by a license server system. This is commonly referred to as a *served* license model. License files supplied by your software vendor that include **SERVER**, **VENDOR**, and optionally, **USER_SERVER** lines require a license server system. See [“Served Licenses”](#) for details.
- Licenses are not served by a license server system but are available directly to the application. This is commonly referred to as an uncounted, or *unserved* license model. See [“Unserved Licenses”](#) for details.

Served Licenses

For served licenses, there are four required FLEXnet Licensing components:

- [The FLEXenabled Application](#) , with the FLEXnet Licensing static client library linked into it.
- [The License Server Manager \(lmgrd\)](#) .
- [The Vendor Daemon](#) , which, along with the license server manager, `lmgrd`, comprises the license server system.
- [The License File](#) .

In addition to these four FLEXnet Licensing components, there are three optional components:

- [Debug Log File](#) — created and written by `lmgrd`.
- [Report Log File](#) — created and written by the vendor daemon for use by FLEXnet Manager.
- [End-User Administration Options File](#) — file created and maintained by the end user.

Figure 1-1 shows the relationship these FLEXnet Licensing components have to one another. See “[Component Overview](#)” for a description of each component.

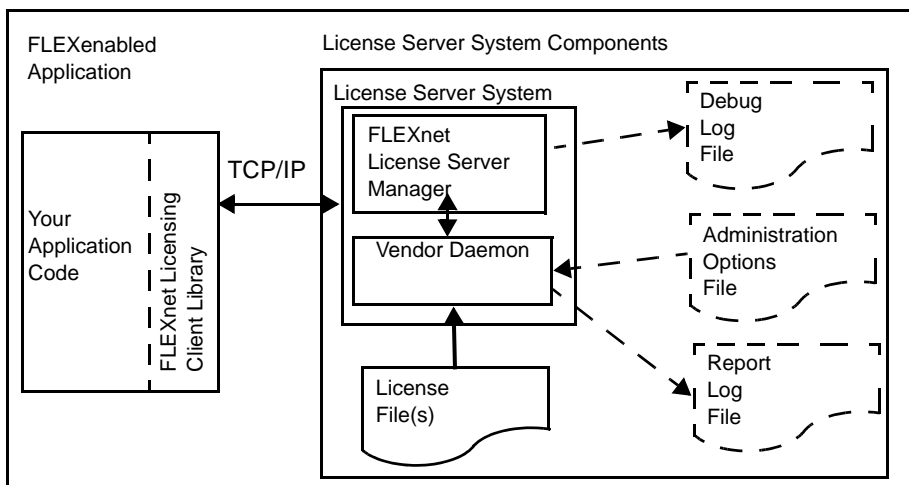


Figure 1-1: FLEXnet Served License Component Model

Typically, the license server system components reside on a machine in the network but can optionally reside on the same machine as the FLEXenabled application.

The three optional files: Debug Log, Administration Options, and Usage Log files are configured by the end user.

Unservd Licenses

License models that do not need a license server system have two FLEXnet Licensing components:

- [The FLEXenabled Application](#) , with the FLEXnet Licensing static client library linked into it.
- [The License File](#) .

Figure 1-2 shows this model. See “[Component Overview](#)” for a description of each component.

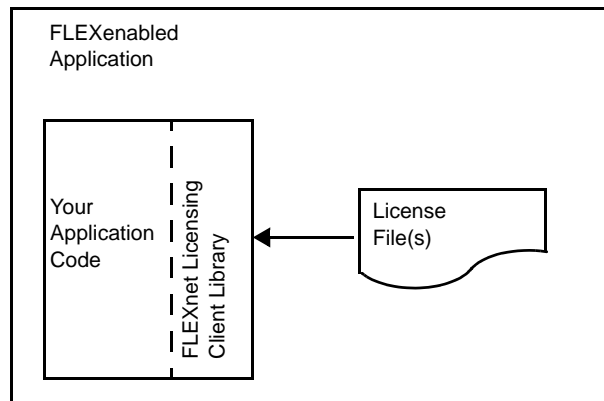


Figure 1-2: FLEXnet Unserved License Component Model

The FLEXenabled application and license certificate reside on the same machine.

Component Overview

The License Server Manager (lmgrd)

The *license server manager* (lmgrd) handles the initial contact with the FLEXenabled applications, passing the connection on to the appropriate vendor daemon. It also starts and restarts the vendor daemons.

Chapter 6, “[The License Server Manager](#),” contains information for configuring and starting the license server manager in your environment.

The Vendor Daemon

In FLEXnet Licensing, counted (floating) licenses are granted by processes running on the system. There is one process for each vendor who has a FLEXenabled product on the network. This process is called the *vendor daemon*. The vendor daemon keeps track of how many licenses are checked out, and who has them.

FLEXenabled applications communicate with the vendor daemon, through TCP/IP network communications. The FLEXenabled application and the daemon processes (the *license server system*) can run on separate machines on your network, across any size wide-area network. Also, the format of the traffic between the FLEXenabled application and the vendor daemon is machine independent, allowing for heterogeneous networks. This means the license server system and the computer running an application can be either different hardware platforms or even different operating systems (Windows and UNIX, for example).

If the vendor daemon terminates for any reason, all users lose their licenses (though this does not mean the applications suddenly stop running). Users normally regain their license automatically when `lmgrd` restarts the vendor daemon, though they may exit if the vendor daemon remains unavailable. This behavior is defined by the vendor in the FLEXenabled application.

The License File

Licensing data is stored in a text file called the *license file*. The license file is created by the software vendor, and edited and installed by the license administrator. It contains information about the server machines and vendor daemons, and at least one line of data (called FEATURE or INCREMENT lines) for each FLEXenabled product. Each FEATURE line contains a license key or signature based on the data in that line, the hostids specified in the SERVER line(s), and other vendor-specific data. FLEXenabled applications that are licensed with a node-locked, uncounted license need only read a valid license file to run—they do not need a license server system.

Most applications have an expected location for the license file, documented by that application. Override this location by setting the environment variable `LM_LICENSE_FILE` to point elsewhere, or by following instructions supplied with the FLEXenabled application. If your site has software from multiple vendors with incompatible license files (due to different sets of servers), keep the data in separate files and set the `LM_LICENSE_FILE` variable to reference multiple files.

It is recommended that you keep a link (on UNIX), a shortcut (on Windows), or copy of the license file in the vendor's expected license location, so that users do not need to set `LM_LICENSE_FILE` to run their applications. For license files containing counted (floating) licenses, it is recommended to place a `USE_SERVER` line directly after the `SERVER` line. For details, see [Appendix B, "License File Format."](#) See also [Appendix D, "FLEXnet Licensing Environment Variables."](#)

The FLEXenabled Application

The FLEXenabled application is linked with the program module (called the FLEXnet Licensing client library) that provides the communication with the license server system. During execution, the FLEXenabled application communicates with the vendor daemon to request a license.

Debug Log File

The debug log file contains status and error messages useful for debugging the license server system. Some of the debug log output describes events specific to `lmgrd` and some of the debug log output describes events specific to each vendor daemon. See [Appendix G, "The Debug Log File,"](#) for more information about this file.

End-User Administration Options File

The end-user administration options file allows the end-user license administrator to control various operating parameters of FLEXnet Licensing that remain within the license rights granted to them by the vendor. Specifically, the license administrator can:

- Allow the use of features
- Deny the use of features
- Reserve licenses
- Restrict the number of licenses available
- Control the amount of debugging information logged about license usage
- Enable a report log file

See [Chapter 5, “The Options File.”](#) for details on how to create this file.

Report Log File

The report log file contains feature usage information and is generated by the vendor daemon. Use Macrovision's software license administration solution, FLEXnet Manager, to gain exceptional visibility into license usage data and to create insightful reports on critical information like license availability and usage. See [Appendix F, “The Report Log File,”](#) details regarding this file.

FLEXnet Licensing Components Shipped by Your Vendor

This section provides a list of FLEXnet Licensing components that may be supplied to you by your software vendor along with the FLEXenabled application. [Table 1-1](#) provides a general list and may differ from that actually supplied. Your vendor is the definitive source for the list of FLEXnet Licensing components that are shipped.

Table 1-1: FLEXnet Licensing Components for End-User Distribution

Component	Description
Windows and UNIX Common Components	
lmgrd.exe lmgrd (UNIX)	Required for served license models. The license server manager and vendor daemons, where <i>vendor</i> is the name of your vendor.
vendor.exe vendor (UNIX)	
lmutil.exe lmutil (UNIX)	Optional component. FLEXnet Licensing utilities program. Used for license server system management and administration. Also available from www.macrovision.com .

Table 1-1: FLEXnet Licensing Components for End-User Distribution

Component	Description
<code>FLEXidInstaller.exe</code>	Required if vendor supports FLEXid hostids on Windows platforms
<code>aksusbd-redhat-1.5-1.i386.rpm</code>	Required if vendor supports FLEXid hostids on Red Hat Linux version 8 and 9 platforms.
<code>aksusbd-suse-1.7-2.i386.rpm</code>	Required if vendor supports FLEXid hostids on SuSE Linux platforms.
<code>HDD_Linux.tar.gz</code>	Required if vendor supports FLEXid hostids on Red Hat Linux 7 platforms.
<code>HDD_Unified_Installer_sit.hqx</code>	Required if vendor supports FLEXid hostids on Mac OS X platforms.
Additional Windows Components	
<code>lmtools.exe</code>	Optional component. Graphical user interface for FLEXnet Licensing utilities, <code>lmutil.exe</code> . Also available from www.macrovision.com .
<code>lmgr10.dll</code>	Required if the FLEXenabled application is dynamically linked. This library provides the standard FLEXnet Licensing client library routines.

The License Request Process

When you run a counted FLEXenabled application, the following occurs:

1. The license module in the FLEXenabled application finds the license file, which includes the host name of the license server machine and TCP/IP port number of the license server manager, `lmgrd`.
2. The FLEXenabled application establishes a connection with the license server manager (`lmgrd`) and tells it what vendor daemon it needs to talk to.
3. `lmgrd` determines which machine and TCP/IP port correspond to the master vendor daemon and sends that information back to the FLEXenabled application.
4. The FLEXenabled application establishes a connection with the specified vendor daemon and sends its request for a license.
5. The vendor daemon checks in its memory to see if any licenses are available and sends a grant or denial back to the FLEXenabled application.
6. The license module in the application grants or denies use of the feature, as appropriate.

Uncounted features (where the license count is 0) do not require a license server system, and the FLEXnet Licensing client library routines in the application grant or deny usage based solely upon the contents of the license file.

Configuring FLEXnet Licensing

Most of the parameters of FLEXnet Licensing are configurable by the license administrator. The license administrator can set the:

- Location of the license file (though it's recommended that a copy or link of the license remains at the location where the application expects it)
- Location of all executables
- Location of all log files
- TCP/IP port number used by the license server manager, `lmgrd`

In addition, the license administrator can reserve licenses for specific users, machines, or groups, and control other license-related options. Changing parameters is discussed in [Chapter 5, “The Options File.”](#)

Note Refer to your vendor's documentation before attempting to change file names, locations, or contents.

Getting Started Checklist

The following sections provide a quick overview of how to set up and use licensing for FLEXenabled products.

Installing FLEXenabled Software

As a license administrator you are responsible for setting up licensing on your system or network. This section tells you how to do that. If you are an end user of the application and you are not involved in installing it, then go to [“Notes for End Users.”](#)

The installation guide for your application software is the final word on installing and configuring FLEXnet Licensing. Generally, however, installing FLEXnet Licensing requires the following steps:

1. Select your license server machines and get their hostids. See [Chapter 4, “Selecting License Server Machines,”](#) and [Appendix A, “Hostids for FLEXnet Licensing-Supported Platforms.”](#)
2. Give the hostids to your software vendor and get a license file (or the data to enter in the license file) in return.
3. Consider how to manage license files from multiple vendors. See [Chapter 3, “Managing Licenses from Multiple Vendors.”](#)

4. Determine if an options file is desired, and if so, set it up.
5. Determine where to install the FLEXnet Licensing utility programs such as `lmgrd` and `lmutil` (`lmstat`/`lmdown`/etc.) and install them, unless your vendor's installation script does so for you.
6. Start `lmgrd` (the license server manager) manually; you may also want to set it up to start automatically at boot time. See [Chapter 6, "The License Server Manager."](#)

These steps are discussed briefly below.

License Server Machine and Hostids

Before running any FLEXenabled application using floating licenses, you first need to set up your license server machine (or machines). You must select which machine or machines to run your license server systems on and provide the hostids of those machines to your software vendor. For pointers on selecting your server machine, see [Chapter 4, "Selecting License Server Machines."](#)

Get the hostid of the server machine by running FLEXnet Licensing's `lmhostid` utility on that machine. If you don't have `lmhostid`, get the hostid of your machine by using the appropriate command as described in [Appendix A, "Hostids for FLEXnet Licensing-Supported Platforms."](#)

Using the hostid of your server machines, your vendor issues a license file to you that enables the application software.

License Files and lmgrd

Once you have received a license file from your vendor, you must install it on your system and start up the license server manager, `lmgrd`.

- Your software vendor may have selected a default location for your license file. If not, use any location you wish. For more details, see [Chapter 2, "License File Basics."](#)
- To start `lmgrd` automatically at boot time, you have to modify your system files (UNIX) or use LMTOOLS (Windows). For details, see ["License File Format Overview."](#)

Administration Tools

Macrovision supplies administration tools to your software vendor. The vendor usually includes these utilities with their product. Download the latest version from www.macrovision.com. See [Chapter 7, "License Administration Tools,"](#) for more information about how to use the FLEXnet Licensing utilities.

Options Files

The options file controls various options such as reservations and timeouts of licenses. Most users run without an options file, but you may decide you want to use some options. For example, many administrators use an option to limit the quantity and content of logged messages. To set up an options file, see [Chapter 5, "The Options File."](#)

Notes for End Users

As a user of a FLEXenabled application, you may need to know a few things to use the system effectively. The main things you need to know are:

- How to tell an application which license file to use
- How to query the system to find out who is using a license

How to Specify a License File Location

The license file determines what features are available to a FLEXenabled application. It also contains information telling the application how to connect to the license server system.

For information about the standard way of specifying the location of a license file for an application, see [Chapter 2, “License File Basics.”](#)

Getting Information About Licenses

To find out who is using a license run `lmstat`, described in [Chapter 7, “License Administration Tools.”](#)

License File Basics

2

The license file contains information required by FLEXnet Licensing to manage licenses for a FLEXenabled application. This information includes:

- License server system names and hostids
- Vendor names and paths to vendor daemon executables
- Feature information

In general, the license file, or a copy of it, must be accessible to every machine that runs a FLEXenabled application, and to each machine designated as a license server machine.

Specifying Location of the License File

Software vendors often recommend a specific location for your license file. If you are running the application on multiple machines, you have these options for making your licenses available on all the machines:

- Place the license file in a partition which is available to all machines in the network that need the license file.
- Copy the license file to all of the machines where it is needed.
- Set the `LM_LICENSE_FILE` or `VENDOR_LICENSE_FILE` (where *VENDOR* is the vendor daemon name) environment variable to *port@host*, where *host* and *port* come from the `SERVER` line in the license file. Alternatively, if the license file `SERVER` line specifies a TCP/IP port in the default port range (27000-27009) or does not specify a port (thereby allowing the system to choose one from the default range), use the shortcut specification, *@host*.

For three-server redundant server configurations, use a comma separated list of three *port@host* specifiers denoting the three-server redundant configuration. For example,

```
port1@host1,port2@host2,port3@host3
```

specifies the three-server redundant configuration composed of `host1`, `host2`, and `host3`.

[Table 2-1](#) shows some examples of `LM_LICENSE_FILE` and `VENDOR_LICENSE_FILE` environment variable settings.

Table 2-1: Environment Variable Specification Examples

SERVER Line	LM_LICENSE_FILE or VENDOR_LICENSE_FILE Setting
SERVER myserver 17007ea8 40000 where: <ul style="list-style-type: none">• <code>host</code> = myserver• <code>port</code> = 40000	40000@myserver
SERVER myserver 17007ea8 27001 where: <ul style="list-style-type: none">• <code>host</code> = myserver• <code>port</code> = 27001, within the default range	@myserver
SERVER myserver 17007ea8 where: <ul style="list-style-type: none">• <code>host</code> = myserver• <code>port</code> = none specified, uses a default TCP/IP port number in the range of 27000-27009	@myserver

- On Windows, if the application cannot find the license file, the user is presented with a dialog that asks the user to specify the license file location, the license server system, or license fulfillment from the internet.

Since the vendor daemon keeps track of license usage, and since the license file contains encrypted data to protect it against modification, you may move and copy the license file as much as necessary.

For counted licenses, no matter which option you choose, you must first copy `lmgrd` and the vendor daemon to a location accessible by the FLEXenabled application.

Setting the Path with an Environment Variable

Most applications specify a location where they expect to find the license file and install it automatically. However, you can change the license file location by setting the `LM_LICENSE_FILE` environment variable to a *license_file_list*. Wherever *license_file_list* is specified it can consist of the following components:

- the full path to the license file
- a directory containing one or more license files with a `.lic` extension
- a `port@host` setting, where `port` and `host` are the TCP/IP port number and host name from the `SERVER` line in the license file. Alternatively, use the shortcut specification, `@host`, if the license file `SERVER` line uses a default TCP/IP port or specifies a port in the default port range (27000-27009).
- A comma separated list of three `port@host` specifiers denoting a three-server redundant configuration. For example,

```
port1@host1,port2@host2,port3@host3
```

specifies the three-server redundant configuration composed of `host1`, `host2`, and `host3`.

Applications accept an environment variable (or Windows Registry) named `VENDOR_LICENSE_FILE`, where `VENDOR` is the vendor daemon name, e.g., `GSI_LICENSE_FILE`. This environment variable's scope is limited to just those applications from vendor `VENDOR`. On UNIX, the license-file list components are separated by colons; on Windows, the components are separated by semi-colons.

With `lmgrd` and `lmutil` (`lmstat`, `lmdown`, etc.), the `-c` option overrides the setting of the `LM_LICENSE_FILE` environment variable.

Note Some applications do not recognize the `LM_LICENSE_FILE` environment variable. FLEXenabled Java applications, in particular, do not recognize it.

See Also

- [“Managing Multiple License Files”](#) for more information about `LM_LICENSE_FILE`.
- [Appendix D, “FLEXnet Licensing Environment Variables”](#)



FLEXNET LICENSING VERSION NOTES

- Default TCP/IP port number range introduced in v6.0 of `lmgrd`.
 - License file location dialog introduced in v6.0 of the client library.
-

License File Format Overview

License files usually begin with a `SERVER` line (or three lines for three-server redundant servers) followed by one or more `VENDOR` lines, followed by one or more `FEATURE` or `INCREMENT` lines. In some cases the license file requires no `SERVER` line and no `VENDOR` line.

You can modify these elements in the license file:

- Host names on the `SERVER` line(s)

- TCP/IP port numbers on the SERVER line(s)
- Paths on the VENDOR line(s)
- Options file paths on the VENDOR line(s)
- Optional TCP/IP port numbers on the VENDOR line(s) (for firewall support only)
- USE_SERVER line
- Values in *keyword=value* pairs on FEATURE lines, if *keyword* is specified in lowercase

See Also

- [“Redundant License Server Systems”](#)
- [“Counted vs. Uncounted Licenses”](#)
- [Appendix B, “License File Format,”](#) for details on each one of these components.



FLEXNET LICENSING VERSION NOTES

- USE_SERVER introduced in the v5.0 client library.
 - VENDOR lines are known as DAEMON lines in the pre-v6.0 `lmgrd` and `vendor` daemon.
-

Types of License Files

License files are created by the software vendor. License files specify floating (concurrent) usage, node-locked (both counted and uncounted), or any combination of floating, counted, and uncounted.

Floating (Concurrent) Licenses

A *floating license* means anyone on the network can use the FLEXenabled application, up to the limit specified in the license file (also referred to as *concurrent usage* or *network licensing*). Floating licenses have no hostids on the individual FEATURE lines. Floating licenses requires an `lmgrd` and a `vendor` daemon to be running to count the concurrent usage of the licenses.

An example of a license file that provides floating licenses is:

```
SERVER lulu 17007ea8
VENDOR sampled
FEATURE f1 sampled 1.00 1-jan-2005 2 SIGN=signature1
FEATURE f2 sampled 1.00 1-jan-2005 6 SIGN=signature2
FEATURE f3 sampled 1.00 1-jan-2005 1 SIGN=signature3
```

This license file specifies that two licenses for feature “f1,” six licenses for feature “f2,” and one license for feature “f3” are available anywhere on the network that can access the license server machine “lulu.” `lmgrd` uses one of the default FLEXnet Licensing TCP/IP ports.

Node-Locked Licenses

Node-locking means the FLEXenabled software can only be used on one machine or a set of machines. A node-locked license has a `hostid` on any `FEATURE` line that is node-locked to a particular host. There are two types of node-locked licenses; uncounted and counted.

If the number of licenses is set to 0 (or uncounted), then the license is uncounted and unlimited use is permitted on the specified machine. This configuration does not require an `lmgrd` or a vendor daemon because it is not going to count the concurrent usage of the features.

The following license file allows unlimited usage of feature “f1” on the machines with `hostids` of “17007ea8” and “1700ab12”:

```
FEATURE f1 sampled 1.000 1-jan-2005 uncounted SIGN=signature1 \  
HOSTID=17007ea8  
FEATURE f1 sampled 1.000 1-jan-2005 uncounted SIGN=signature2 \  
HOSTID=1700ab12
```

Alternately, these two `FEATURE` lines could have been issued by your software vendor with a *hostid list*:

```
FEATURE f1 sampled 1.000 1-jan-2005 uncounted SIGN=signature \  
HOSTID="17007ea8 1700ab12"
```

If these were the only `FEATURE` lines in this license file, no `lmgrd` daemon is necessary and you do not need to start one.

The following license file provides three licenses for feature “f1”, locked to the machine with `hostid` “1300ab43.” Since the license server system and licenses are locked to the same machine, the daemons run on the same machine that runs the FLEXenabled application.

```
SERVER lulu 1300ab43 1700  
VENDOR sampled /etc/sampled  
FEATURE f1 sampled 1.00 1-jan-2005 3 SIGN=signature \  
HOSTID=1300ab43
```

Mixed Node-Locked and Floating Licenses

Uncounted node-locked and concurrent usage licenses can be mixed in the same license file.

The following license file allows unlimited use of feature “f1” on machines “17007ea8” and “1700ab12,” while allowing two other licenses for feature “f1” to be used anywhere else on the network:

```
SERVER lulu 17001234 1700  
VENDOR sampled C:\flexlm\sampld.exe  
FEATURE f1 sampled 1.00 1-jan-2005 uncounted SIGN=signature1 \  
HOSTID=17007ea8  
FEATURE f1 sampled 1.00 1-jan-2005 uncounted SIGN=signature2 \  
HOSTID=1700ab12  
FEATURE f1 sampled 1.00 1-jan-2005 2 SIGN=signature3
```

This configuration requires an `lmgrd` and a vendor daemon because the concurrent usage of the two licenses on the third FEATURE line is counted.

Managing Licenses from Multiple Vendors 3

Since more than 2500 vendors have chosen FLEXnet Licensing for their licensing management, chances are good that you have to administer FLEXnet Licensing licenses from more than one vendor.

Overview of Multiple License Management Strategies

When you are running FLEXenabled products from multiple vendors, you may need to take steps to prevent licensing conflicts during installation. There are several strategies to accomplish this, of which three are presented here:

- Multiple machines, each running one `lmgrd`, one vendor daemon, and using one license file.
- One license server machine running multiple `lmgrds`, each of which running one vendor daemon and using one license file.
- One license server machine running one `lmgrd`, multiple vendor daemons each of which using its own license file. License files share a common directory.

These strategies are ordered from most to least independence among vendors. In the first option mentioned above, you have the most license server machines to monitor; in the third option you have only one server and one license file to administer. Each of these three strategies is described in detail in the following sections. Variations are mentioned in [“Additional Considerations.”](#)

Multiple Machines

In this scenario, each distinct vendor daemon and its associated license file or files is located on a separate server machine. Each machine serves licenses just for its vendor daemon and runs its own local copy of `lmgrd`. [Figure 3-1](#) shows this arrangement.

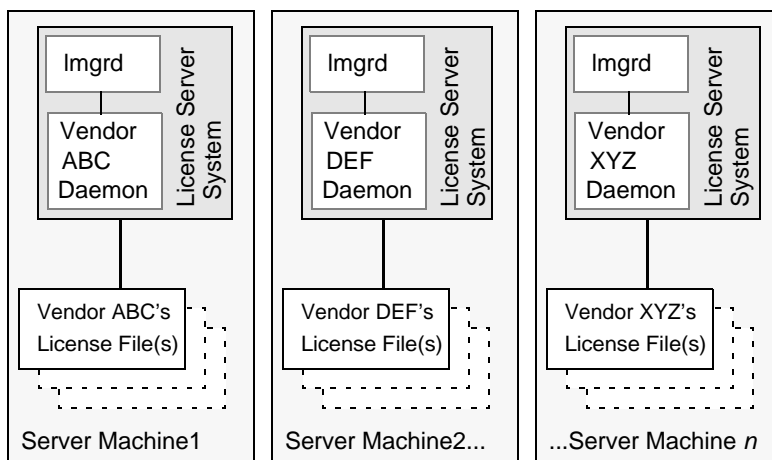


Figure 3-1: Multiple Server System Machines

Advantages

- The license files for each vendor are independent from one another.
- Machines are maintained separately. If one machine goes down, the other machines continue to serve licenses for their vendors.
- Each server has its own debug log.
- Licensing load is distributed.

Disadvantages

- Administrative overhead is the highest.
- If one machine goes down, licensing for the vendor's product associated with that machine is down.

Starting the License Server System

Invoke the license server manager on each machine:

```
lmgrd -c server_machine_n_license_list
```

Where `server_machine_n_license_list` is a license-file list as described in [“Managing Multiple License Files.”](#) Each `lmgrd` starts the vendor daemon referred to in its license file(s).

One Machine with Multiple License Server Systems

In this model, each vendor daemon and its associated license file or files is served by its own `lmgrd` process, and everything is contained in one server machine. [Figure 3-2](#) depicts this scheme.

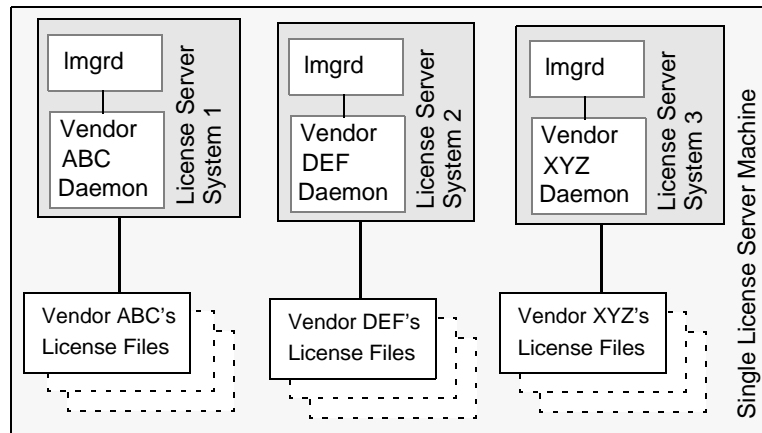


Figure 3-2: Multiple `lmgrds`, Multiple License Files

When maintaining separate license server systems on the same machine, keep in mind:

- If the TCP/IP port number is specified on the `SERVER` line, it must be different for each license server system. Use a standard text editor to change the TCP/IP port number in each license file so that they are all different. If you are running 10 license server systems or less, you can omit all port numbers and `lmgrd` will choose unique ones for you within the default range of 27000-27009.
- You must make sure that you are using a compatible version of `lmgrd` for each particular license file. This is done by using an explicit path to `lmgrd`. See [“Version Component Compatibility.”](#)
- The number of license server systems is limited only by the CPU memory and networking of the machine.

Advantages

- The license files for each vendor are independent from one another.
- License server systems are maintained separately. If one server goes down, the other servers continue to serve licenses for their vendors.
- Each server has its own debug log.

Disadvantages

- Administrative overhead is high.
- If the machine goes down, all licensing is disabled.

- Licensing load is concentrated to one machine.

Starting the License Server System

Invoke each license server system:

- For Server 1: `lmgrd -c vendor_ABC_license_dir_list`
- For Server 2: `lmgrd -c vendor_DEF_license_dir_list`
- For Server 3: `lmgrd -c vendor_XYZ_license_dir_list`

Where `vendor_nnn_license_list` is a license-file list as described in [“Managing Multiple License Files.”](#) Each `lmgrd` starts the vendor daemon referred to in its license file(s).

One Machine with One License Server System and Multiple License Files

In this scenario, one `lmgrd` process runs on the server machine and serves one or more vendor daemons, each with one or more license files; the license files usually are in the same directory. The standard filename extension for license files is `.lic`. The number of vendor daemons is not limited by FLEXnet Licensing. [Figure 3-3](#) illustrates this scenario.

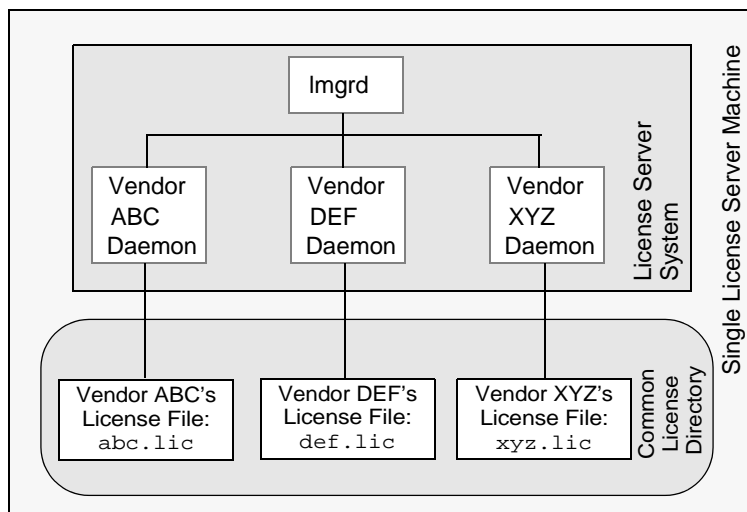


Figure 3-3: One `lmgrd`, Multiple License Files

Advantages

- The license files can be maintained separately.
- Reduced administrative overhead.

Disadvantages

- One `lmgrd` serves all vendor daemons. If `lmgrd` goes down, all licensing is disabled.
- If the machine goes down, all licensing is disabled.

- Output from all vendor daemons goes into one common debug log unless separate debug logs are specified with `DEBUGLOG` in each vendor's options file. Having one common debug log makes it harder to debug a single vendor daemon's problem.
- Maximizes licensing load to one machine and one `lmgrd` process.

Starting the License Server System

Invoke the license server manager once on the server machine.

```
lmgrd -c common_license_directory
```

`lmgrd` processes all files with the `.lic` extension in *common_license_directory* and starts all vendor daemons referred to in those files; so, there is no need to enumerate each license file name on the `lmgrd` command line.

See Also

- [“Managing Multiple License Files”](#)
- [“Capturing Debug Log Output for a Particular Vendor Daemon”](#)



FLEXNET LICENSING VERSION NOTES

- Ability for one `lmgrd` to process multiple license files introduced in v6.0 `lmgrd`.
-

Managing Multiple License Files

You can manage multiple license files that are on the same server machine via a license-file list. A license-file list is specified two ways:

- By using the `-c` option to `lmgrd`

```
lmgrd -c license_file_list [other lmgrd options]
```
- By defining the `LM_LICENSE_FILE` environment variable within the scope of the `lmgrd` process' environment.

Install the license files in convenient locations on the server machine and then define the *license_file_list*.

Wherever *license_file_list* is specified it consists of a list of one or more of the following components:

- the full path to the license file
- a directory containing one or more license files with a `.lic` extension
- a *port@host* setting, where *port* and *host* are the TCP/IP port number and host name from the `SERVER` line in the license file. Alternatively, use the shortcut specification, *@host*, if the license file `SERVER` line uses a default TCP/IP port or specifies a port in the default port range (27000-27009).

- A comma separated list of three *port@host* specifiers denoting a three-server redundant configuration. For example,
`port1@host1,port2@host2,port3@host3`
specifies the three-server redundant configuration composed of `host1`, `host2`, and `host3`.

Note Use a colon (“:”) to separate the license file names on UNIX and on Windows use a semicolon (“;”).

`lmgrd` builds up an internal license-file list when it starts up by parsing each license-file list component in the order listed.

Some scenarios where a license-file list is used include those described in [“Multiple Machines”](#), [“One Machine with Multiple License Server Systems”](#) or [“One Machine with One License Server System and Multiple License Files.”](#):

See Also

- [“Setting the Path with an Environment Variable”](#)
- [“Redundancy via License-File List”](#)
- [Appendix D, “FLEXnet Licensing Environment Variables”](#)

Additional Considerations

Combining license files

If you have two or more products whose licenses are intended for the same machine, as specified by their `SERVER` lines, you may be able to combine the license files into a single license file. The license files for the models described in [“One Machine with Multiple License Server Systems”](#) and [“One Machine with One License Server System and Multiple License Files”](#) could be combined if they met certain criteria. See [“Criteria for Combining License Files.”](#)

Figure 3-4 shows one possible scenario using a combined license file.

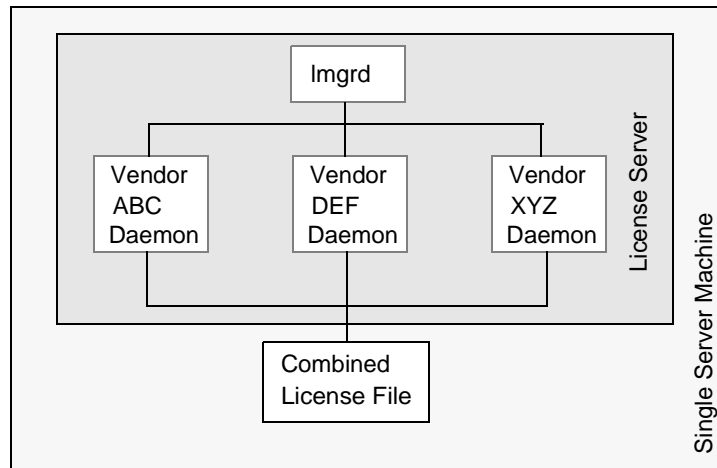


Figure 3-4: One lmgrd, One License File

Advantages

- A single license file to administer.
- Once the files are combined, there is low administrative overhead.

Disadvantage

- Careful planning must be given in combining license lines from multiple vendors into one file, initially and over time.

Starting the License Server System

Invoke the license server manager once on the server machine.

```
lmgrd -c combined_license_file
```

Criteria for Combining License Files

Your product's license file(s) define the license server machine(s) by host name and hostid in the SERVER line(s) in the license file. License files are candidates for combining under the following conditions:

- The number of SERVER lines in each file is the same.
- The hostid field of each SERVER line in one file *exactly* matches the hostid field of each SERVER line in the other file.

Some possible reasons license files may not be compatible are:

- License files are set up to run on different server machines, so hostids are different.
- One file is set up for a single server system (has only one SERVER line), the other is set up for a three-server redundant license server configuration (has multiple SERVER lines).

- Hostids for the same machine use different hostid types. For example, the SERVER line in one license file uses INTERNET= for its hostid type and the other file uses the ethernet MAC address for its hostid type.

If your license files are compatible as described above, then you have the option of combining license files as summarized in [Figure 3-4](#) and below in “[How to Combine License Files.](#)” Note that you are not required to combine compatible license files. There is no performance or system-load penalty for not combining the files.

How to Combine License Files

If your license files are compatible, use any text editor to combine them. To combine license files, read all of the compatible license files into one file, then edit out the extra SERVER lines so that only one set of SERVER lines remains. Save the resulting data, and you have your combined license file. [Figure 3-5](#) shows an example of combining license files.

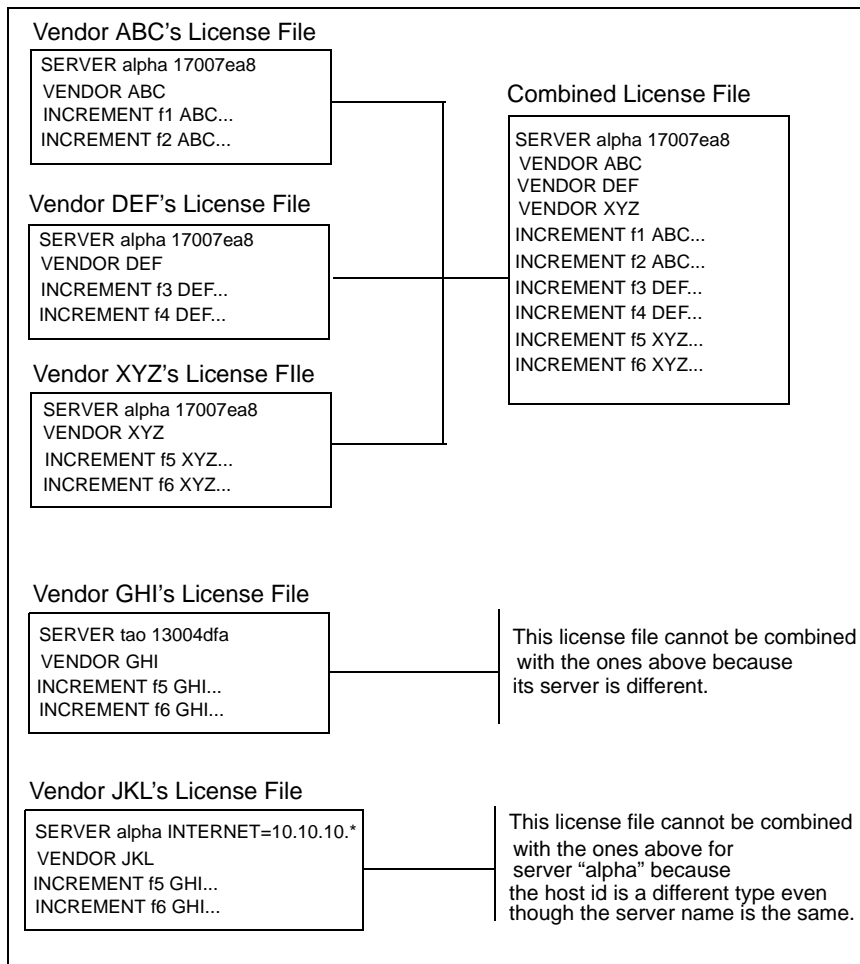


Figure 3-5: Combining License Files

Version Component Compatibility

When one lmgrd process manages multiple vendor daemons, it may be the case that those vendor daemons do not use the same version of FLEXnet Licensing. By observing the FLEXnet Licensing version compatibility rules described in [“Version Compatibility with FLEXnet Licensing Components”](#) you are assured that all of your FLEXnet Licensing components are compatible.

For specific FLEXenabled applications, use either the new or the old version (of course, the vendor daemon for that application must be at least as new as the application itself).

Selecting License Server Machines

4

This chapter helps you decide which machines to use as license server machines.

Resources Used by the Server

This section discusses the resources used by the license server system. When you select a server machine, you may need to take into account the system limits on these resources. For small numbers of licenses (under about 100), most of these system limits are not a problem on any workstation.

Sockets

When using TCP/IP ports, each FLEXenabled application connected to a license server system uses one or more sockets. The number of sockets any one FLEXenabled application requires is dependant on FLEXnet Licensing implementation details; consult your vendor for this information. The number of sockets available to the license server system is defined by the per-process system limit for file descriptors. The total number of sockets used by the license server system is slightly larger than the total number needed by the FLEXenabled applications which are served by it.

If the number of sockets required by the license server system on a single machine becomes excessive, then it's probably good to split the license file into more than one file, onto different servers, to lighten the networking traffic (which requires the vendor to agree to issue new licenses). FLEXenabled applications then check out licenses from multiple servers using a license-file list via the `LM_LICENSE_FILE` environment variable.

CPU Time

For small numbers of clients, the license server systems use very little CPU time. The servers might have only a few seconds of CPU time after many days.

For a large number of clients (who are each exchanging heartbeat messages with the server), or for high checkout/checkin activity levels (hundreds per second), the amount of CPU time consumed by the server may start to become significant, although, even here, CPU usage is normally not high. In this case, you may need to ensure that the server machine you select has enough CPU cycles to spare.

Disk Space

The only output files created by the license server systems are the debug and report log files. The report log files are used to generate accurate usage reports by FLEXnet Manager. If you have a lot of license activity, these log files grow very large. You need to consider where to put these files and how often to rotate and archive them. The license administrator has the option to suppress log file output if disk space is at a premium.

It is recommended that the log files are local files on the server machine(s) to avoid networking dependencies.

See Also

- [“Setting the Path with an Environment Variable”](#)
- [“Starting the License Server Manager on UNIX Platforms”](#)
- [Appendix F, “The Report Log File”](#)
- [Appendix G, “The Debug Log File”](#)

Memory

The FLEXnet license server system uses little memory. On SunOS, `lmgrd` uses approximately 2 MB and the vendor daemons use approximately 2 MB each, although memory usage increases in the vendor daemon with the size of the license file, size of the options file, and the number of concurrent users.

Network Bandwidth

FLEXnet Licensing sends relatively small amounts of data across the network. Each transaction, such as a checkout or checkin, is typically satisfied with less than 1 KB of data transferred. This means that FLEXnet Licensing can be effectively run over slow networks (such as dial-up SLIP lines) for small numbers of clients.

For a large number of FLEXenabled applications (hundreds), each of which exchange heartbeat messages with the vendor daemon, the network bandwidth used may start to become significant. In this case, run the FLEXenabled application and server on the same local area network, which may require splitting licenses between two files for two servers. Users can use a license-file list in the `LM_LICENSE_FILE` environment variable to have effective access to both servers.

See Also

- [“Specifying Location of the License File”](#)

Remote Mounted Disks

Macrovision recommends that you do not use remote mounted disks when you run the license server system. In other words, it is recommended that `lmgrd`, the vendor daemons, the license file, and the debug and report log files are all on locally mounted disks. If any of these files is

on a remote mounted disk, you double the points of failure which could lead to a temporary loss of all of your licenses. When all files are mounted locally, the licenses are available as long as the server machine is up; but when the files are on a different machine, then the loss of either the license server machine or the file server machine causes the licenses to be unavailable.

Redundant License Server Systems

If you wish to use redundant license server systems, select stable machines; in other words, do not pick machines that are frequently rebooted or shut down for one reason or another. Redundant license server machines are any that support a license server system.

FLEXnet Licensing supports two methods of redundancy:

- via a license-file list in the `LM_LICENSE_FILE` environment variable
- via a set of three redundant license server systems

With `LM_LICENSE_FILE` list redundancy, each one of a group of license server systems serves a subset of the total licenses. The end user sets `LM_LICENSE_FILE` to a list of license files, where each license file refers to one of the license server systems. The application then tries each server in the list, in order, until it succeeds or gets to the end of the list.

With three-server redundancy, if any two of the three license server systems are up and running (two out of three license server systems is referred to as a *quorum*), the system is functional and serves its total complement of licenses.

See Also

- [“Managing Multiple License Files.”](#)

Redundancy via License-File List

This is best explained by example. If ten licenses are desired for both “f1” and “f2,” the vendor issues two sets of licenses with a count of 5 for each of “f1” and “f2.” The server machines (unlike three-server redundancy) can be physically distant.

The license files look like:

License 1 for “chicago”

```
SERVER chicago 17007ea8 1700
VENDOR sampled /etc/mydaemon
FEATURE f1 sampled 1.000 01-jan-2005 5 26C7DD9C0186
FEATURE f2 sampled 1.000 01-jan-2005 5 8CE46C57041D
```

License 2 for “tokyo”

```
SERVER tokyo 17a07e08 1700
VENDOR sampled /etc/mydaemon
FEATURE f1 sampled 1.000 01-jan-2005 5 16BE40E1D98D
FEATURE f2 sampled 1.000 01-jan-2005 5 6DB6F3E402DF
```

The user in Chicago could set `LM_LICENSE_FILE` to:

```
1700@chicago:1700@tokyo
```

The user in Tokyo could set `LM_LICENSE_FILE` to:

```
1700@tokyo:1700@chicago
```

Remember to separate the license file names with a colon (":") on UNIX and with a semicolon (";") on Windows. The application attempts the first server in the list, and if that fails for any reason, the second server is tried.

Three-Server Redundancy

The machines that comprise a three-server redundant configuration are required to have excellent communications. This form of redundancy requires that the servers exchange heartbeats periodically, and poor communications can cause poor performance. Avoid configuring redundant servers with slow communications or dial-up links.

Three-server redundancy is designed to provide hardware fail-over protection only and does not provide load-balancing. Use `LM_LICENSE_FILE` list, instead, if load-balancing is desired. This is because with three-server redundancy, only one of the three servers is "master," capable of issuing licenses. Since all clients must contact the "master," all clients must have reliable networking to a single machine. For more details, see ["Three-Server Redundant Configurations."](#)

Comparing Three-Server to License-File List

Are there any drawbacks to using the license-file list for redundancy?

Yes. By default, once a FLEXenabled application has successfully checked out a license from a given license server system, all subsequent license requests from the same application must be satisfied from the same server system. In the event that the application makes subsequent license requests and no more licenses are available from that server system, the license request is denied even though licenses may exist on another server. An application can bypass this restriction if it is coded with the use of multiple FLEXnet *license jobs*. Only your publisher knows if their application is programmed in this manner.

If the application supports license queueing, all licenses are queued only from the first license server system on the list rather than the request moving to another server on the list.

Finally, if one server becomes unavailable, some licenses are unavailable.

When is it recommended to use a license-file list for redundancy rather than three-server redundant servers?

- When there's less system administration available to monitor license server systems.
- When load-balancing is needed for FLEXenabled applications located far apart, e.g., London and Tokyo, make servers available locally, with remote servers available as backup.

- License-file list is more forgiving if you lose quorum.
- License-file list is not limited to three servers (any number work).
- Clients do not require reliable networking to a single machine with license-file list, so this is recommended where networking itself requires redundancy.

Counted vs. Uncounted Licenses

The license file determines whether a license server system is needed. If all the FEATURE (or INCREMENT) lines have a license count of 0 (unlimited) or “uncounted”, then no server is needed. This type of license is called uncounted. Alternatively, if any FEATURE lines have a non-zero license count, then a server is required to count those licenses. If a vendor wants to use FLEXnet Licensing without a server, they must issue uncounted licenses.

The license server system is able to serve uncounted licenses as well. This is done so that:

- transactions can be logged into the report log for all license requests, which can then be reported on by FLEXnet Manager
- options file constraints can be applied to the licenses

To have uncounted licenses served, include a SERVER line in the license file, and put the USE_SERVER line immediately after the SERVER line. The vendor daemon serves the uncounted licenses, and the USE_SERVER line indicates to applications that requests must go to the license server system for authorization.



FLEXNET LICENSING VERSION NOTES

- “uncounted” keyword introduced in v6 FLEXnet Licensing client library.
-

The Options File

The options file allows the license administrator to control various operating parameters of FLEXnet Licensing. Users are identified by their user name, host name, display, IP address, or PROJECT (which is set with the LM_PROJECT environment variable).

Specifically, the license administrator can:

- Allow the use of features
- Deny the use of features
- Reserve licenses
- Restrict the number of licenses available
- Control the amount of information logged about license usage
- Enable a report log file

Options files allow you, as the license administrator, to be as secure or open with licenses as you like.

Lines in the options file are limited to 2048 characters. The “\” character is a continuation character in options file lines.



FLEXNET LICENSING VERSION NOTES

- PROJECT identification (set by LM_PROJECT) in options file introduced in v7.0 vendor daemon.
-

Creating an Options File

To create an options file:

1. Use the appropriate options listed in [“Options File Syntax”](#) to create the options file using any text editor.
2. Locate the options file anywhere; however, it is recommended that the options file be placed in the same directory as the license file.

3. Add the path to the options file in the license file as the fourth field on the **VENDOR** line for the application's vendor daemon. For example:

```
VENDOR sampled /etc/sampled \  
[options=]/sample_app/sampled/licenses/sampled.opt
```

enables the `sampled` vendor daemon to look at the specified options file.

If the path is omitted, the vendor daemon automatically looks for a file according to the following criteria:

- the name of the file is `vendor.opt`, where `vendor` is the vendor daemon name
- it is placed in the same directory as the license used by `lmgrd`, it is automatically used at server startup



FLEXNET LICENSING VERSION NOTES

- The default options file name, `vendor.opt`, introduced in v6 vendor daemon.
-

Options File Syntax

Below is an overview of the options file syntax. See [“Options File Examples”](#) for examples and additional information.

Each line of the file controls one option. [Table 5-1](#) lists the option keywords.

Table 5-1: Option Keywords

Option Keyword	Description
BORROW_LOWATER	Set the number of BORROW licenses that cannot be borrowed.
DEBUGLOG	Writes debug log information for this vendor daemon to the specified file (v8.0+ vendor daemon).
EXCLUDE	Deny a user access to a feature.
EXCLUDE_BORROW	Deny a user the ability to borrow BORROW licenses.
EXCLUDEALL	Deny a user access to <i>all</i> features served by this vendor daemon.
FQDN_MATCHING	Sets the level of host name matching.
GROUP	Define a group of users for use with any options.

Table 5-1: Option Keywords (cont.)

Option Keyword	Description
GROUPCASEINSENSITIVE	Sets case sensitivity for user and host lists specified in GROUP and HOST_GROUP keywords.
HOST_GROUP	Define a group of hosts for use with any options (v4.0+).
INCLUDE	Allow a user to use a feature.
INCLUDE_BORROW	Allow a user to borrow BORROW licenses.
INCLUDEALL	Allow a user to use <i>all</i> features served by this vendor daemon.
LINGER	Allow a user to extend the linger time for a feature beyond its checkin.
MAX	Limit usage for a particular feature/group—prioritizes usage among users.
MAX_BORROW_HOURS	Changes the maximum borrow period for the specified feature.
MAX_OVERDRAFT	Limit overdraft usage to less than the amount specified in the license.
NOLOG	Turn off logging of certain items in the debug log file.
REPORTLOG	Specify that a report log file suitable for use by the FLEXnet Manager license usage reporting tool be written.
RESERVE	Reserve licenses for a user or group of users/hosts.
TIMEOUT	Specify idle timeout for a feature, returning it to the free pool for use by another user.
TIMEOUTALL	Set timeout on all features.



FLEXNET LICENSING VERSION NOTES

- BORROW_LOWATER options keyword introduced in v8.0 vendor daemon.
- EXCLUDE_BORROW options keyword introduced in v8.0 vendor daemon.
- INCLUDE_BORROW options keyword introduced in v8.0 vendor daemon.

Comments

Include comments in your options file by starting each comment line with a pound sign “#.”

Feature Specification

The feature name can be modified with an optional keyword-value pair to fully qualify it. This notation is used for distinguishing a particular group of licenses when there are multiple FEATURE lines for a single feature. The following syntax is used:

feature:keyword=value

For example:

f1:VERSION=2.0

specifies the version 2.0 pool of licenses for feature “f1”.

Note A colon (:) is a valid feature name character. If colons are in your feature names, specify a group of licenses with the following alternative syntax using quotation marks and spaces:

"feature keyword=value"

The following option keywords are used as feature name modifiers to denote a specific group of licenses:

- VERSION=
- HOSTID=
- EXPDATE=
- KEY=
- SIGN=
- ISSUER=
- NOTICE=
- VENDOR_STRING= (if configured by the vendor as a pooling component)
- dist_info=
- user_info=
- asset_info=

If the USER_BASED or HOST_BASED keywords appear in a feature line, this feature specification syntax must be used to qualify the feature.

Using a package name in place of a feature name applies the option to all of the components in the package.

Type Specification

The following option keywords restrict who may use licenses or where licenses may be used: EXCLUDE, EXCLUDEALL, EXCLUDE_BORROW, INCLUDE, INCLUDEALL, INCLUDE_BORROW, MAX, and RESERVE. These options take a *type* argument, which specifies whether the restriction is based on USER, HOST, DISPLAY, INTERNET, or PROJECT:

- **USER**—user name of the user executing the FLEXenabled application. User names are case sensitive.
- **HOST**—machine host name or IP address where the application is executing. Host names are case sensitive.
The IP-address can contain wildcard characters.
- **DISPLAY**—display where the application is displayed
On UNIX, DISPLAY is /dev/ttyxx (which is always /dev/tty when an application is run in the background) or the X-Display name. On Windows, it is the system name or, in the case of a terminal server environment, the terminal server client name. Display names are case sensitive.
- **INTERNET**—IP address of the machine where the application is executing (wildcard characters can be used in the IP address)
- **PROJECT**—LM_PROJECT environment variable set by the user who is executing the FLEXenabled application. Project names are case sensitive.

On Windows (without terminal server), the HOST and DISPLAY names are both set to the Window's system name. For licenses that allow checkouts from a terminal server (TS_OK keyword in the feature line), the USER, HOST, and DISPLAY names can be different from one another.

The types listed above take a single member. For example:

```
EXCLUDE coolsoft USER joe
```

To specify a list of users or hosts, first define the list using the GROUP or HOST_GROUP option lines, then use the GROUP or HOST_GROUP type to specify the group name. For example:

```
GROUP stars joe barbara susan
EXCLUDE coolsoft GROUP stars
```



FLEXNET LICENSING VERSION NOTES

- IP address as a HOST specification introduced in v8 vendor daemon.
 - LM_PROJECT environment variable introduced in V5 client library and vendor daemon.
 - Colons in feature names introduced in v8 vendor daemon.
-

BORROW_LOWWATER

`BORROW_LOWWATER feature[:keyword=value] n`

Sets the number of licenses for a BORROW feature that cannot be borrowed.

<i>feature</i>	Name of feature being affected.
<i>keyword=value</i>	Feature name modifier to denote a group of licenses. See “Feature Specification” for details.
<i>n</i>	Number of licenses that cannot be borrowed via license borrowing.

For example, if a feature “f1” has a count of 10 and borrowing is enabled in the application and on the FEATURE line:

```
FEATURE f1 ... 10 ... BORROW SIGN=...
```

the following line in the options file allows only 7 licenses to be borrowed.

```
BORROW_LOWWATER f1 3
```

DEBUGLOG

`DEBUGLOG [+]debug_log_path`

Specifies a location for the debug log output from the vendor daemon associated with this options file. Preceding the *debug_log_path* with a + character appends logging entries, otherwise the file is overwritten each time the daemon is started. Note that this affects output from only the vendor daemon associated with this options file. The debug log output of lmgrd and any other vendor daemons in the same license file is not captured in this file.

On Windows, pathnames which include spaces have to be enclosed in double quotes. If lmgrd is started as a service, the default location for the report log file is the c:\winnt\System32 folder unless a fully qualified path is specified.

See Also:

- [“Configuring the License Server Manager as a Windows Service”](#)
- [“lmswitch”](#)
- [Appendix G, “The Debug Log File”](#)



FLEXNET LICENSING VERSION NOTES

- Debug log output restricted to that of just the vendor daemon introduced in V8 vendor daemon.
-

EXCLUDE

```
EXCLUDE feature[:keyword=value] type {name / group_name}
```

Excludes a user or pre-defined group of users, etc., from the list of who is allowed to use the feature. EXCLUDE supersedes INCLUDE; conflicts between the EXCLUDE list and the INCLUDE list are resolved by the EXCLUDE taking precedence.

<i>feature</i>	Name of the feature being affected.
<i>keyword=value</i>	Feature name modifier to denote a group of licenses. See “Feature Specification” for details.
<i>type</i>	One of USER, HOST, DISPLAY, INTERNET, PROJECT, GROUP, or HOST_GROUP. See “Type Specification” for details.
<i>name</i>	Name of an item of type <i>type</i> for which license usage is excluded.
<i>group_name</i>	Name of the group to exclude.

To exclude the user “hank” from the list of users able to use feature “f1”:

```
EXCLUDE f1 USER hank
```

EXCLUDE_BORROW

```
EXCLUDE_BORROW feature[:keyword=value] type \
    {name / group_name}
```

Excludes a user or pre-defined group of users, etc., from the list of who is allowed to borrow licenses for this BORROW feature. EXCLUDE_BORROW supersedes INCLUDE_BORROW; conflicts between the EXCLUDE_BORROW list and the INCLUDE_BORROW list are resolved by the EXCLUDE_BORROW taking precedence.

<i>feature</i>	Name of the feature being affected.
<i>keyword=value</i>	Feature name modifier to denote a group of licenses. See “Feature Specification” for details.
<i>type</i>	One of USER, HOST, DISPLAY, INTERNET, PROJECT, GROUP, or HOST_GROUP. See “Type Specification” for details.
<i>name</i>	Name of an item of type <i>type</i> for which license borrowing is excluded.

group_name Name of the group to exclude from borrowing.

To exclude the user “fred” from the list of users able to borrow feature “f1” assuming the feature has the BORROW attribute:

```
EXCLUDE_BORROW f1 USER fred
```

EXCLUDEALL

```
EXCLUDEALL type {name | group_name}
```

Excludes a user or pre-defined group of users, etc., from the list of who is allowed to use all features served by this vendor daemon.

type One of USER, HOST, DISPLAY, INTERNET, PROJECT, GROUP, or HOST_GROUP. See [“Type Specification”](#) for details.

name Name of an item of type *type* for which license usage is excluded.

group_name Name of the group to exclude.

To exclude any user on the machine “chaos” from using all features served by this vendor daemon:

```
EXCLUDEALL HOST chaos
```

FQDN_MATCHING

```
FQDN_MATCHING exact | lenient
```

Sets the level to which host names used in HOST type-specifiers must match the host name sent by the FLEXenabled application. The application is configured to send either its host name or its fully qualified domain name (FQDN) to the vendor daemon for validation with HOST type-specifiers. Check with your vendor to determine fully qualified domain name support.

exact The host name in the HOST type specifier must match in content and format to that sent by the application. This is the default setting.

lenient The host name sent by the application needs match to the extent supplied in the HOST type specifier or by the application, which ever is less restrictive.

Only the last FQDN_MATCHING keyword in the options file has effect; all others are ignored.

Table 5-2 shows the outcome of matching attempts between HOST type-specifiers in the options file and host names sent by the application.

Table 5-2: Host Name Matching Matrix

			Application configured for FQDN — sends myhost.abc.com	Application not configured for FQDN — sends myhost
Options File	FQDN_MATCHING exact	HOST myhost	no	yes
		HOST myhost.abc.com	yes	no
	FQDN_MATCHING lenient	HOST myhost	yes	yes
		HOST myhost.abc.com	yes	yes

Examples

Consider the following example that demonstrates restrictive host name matching:

```
INCLUDE f1 HOST myhost.abc.com
FQDN_MATCHING exact
```

This includes myhost.abc.com on the list of hosts able to use feature “f1.” Furthermore, the host name sent by the application must be a fully qualified domain name that matches myhost.abc.com exactly.

In contrast, consider this example, which is less restrictive:

```
INCLUDE f2 HOST myhost.abc.com
FQDN_MATCHING lenient
```

This includes myhost.abc.com on the list of hosts able to use feature “f2.” Host names sent such as: myhost.abc.com or simply, myhost match; but myhost.xyz.com, yourhost, or yourhost.abc.com do not match.

The example below is even more lenient:

```
INCLUDE f2 HOST myhost
FQDN_MATCHING lenient
```

This includes the host name, `myhost`, on the list of hosts for feature “f3.” Since lenient matching is specified, host names such as `myhost`, `myhost.abc.com`, and `myhost.xyz.com` match. Whereas, `yourhost` or `yourhost.abc.com` do not match.

See Also

- [“Type Specification”](#)



FLEXNET LICENSING VERSION NOTES

- FQDN_MATCHING introduced in v9.3 client library and vendor daemon.
-

GROUP

```
GROUP group_name user_list
```

Defines a group of users for use in INCLUDE, INCLUDEALL, EXCLUDE, EXCLUDEALL, and RESERVE option lines.

<i>group_name</i>	Name of the group being defined. Group names are case sensitive.
<i>user_list</i>	List of user names in that group. Names are case sensitive. Set the GROUPCASEINSENSITIVE options file keyword to turn on case insensitivity. See “GROUPCASEINSENSITIVE.”

To define the group “Hackers” consisting of “bob,” “howard,” and “james”:

```
GROUP Hackers bob howard james
```

Multiple GROUP lines for the same group name add all the specified users into the group.

Note USER_GROUP is an alias for GROUP.

GROUPCASEINSENSITIVE

```
GROUPCASEINSENSITIVE OFF|ON
```

If set to ON, user names and host names specified with the options file GROUP and HOST_GROUP keywords, respectively, are treated as case insensitive.

By default GROUPCASEINSENSITIVE is OFF; user names and host names are treated as case sensitive.

HOST_GROUP

```
HOST_GROUP group_name host_list
```

Defines a group of hosts for use in INCLUDE, INCLUDEALL, EXCLUDE, EXCLUDEALL, and RESERVE option lines. Multiple HOST_GROUP lines add all the specified hosts into the group.

group_name Name of the group being defined. Host group names are case sensitive.

host_list List of host names in that group. Names are case sensitive. Set the GROUPCASEINSENSITIVE options file keyword to turn on case insensitivity. See [“GROUPCASEINSENSITIVE.”](#)

To define the host group “Pacific” consisting of “tokyo,” “seattle,” and “auckland”:

```
HOST_GROUP Pacific tokyo seattle auckland
```

Anywhere a host name can be used in an options file, an IP-address can be used instead.

INCLUDE

```
INCLUDE feature[:keyword=value] type {name | group_name}
```

Includes a user or pre-defined group of users, etc., in the list of who is allowed to use licenses for this feature. Anyone not in an INCLUDE statement is not allowed to use that feature. EXCLUDE supersedes INCLUDE; conflicts between the EXCLUDE list and the INCLUDE list are resolved by the EXCLUDE taking precedence.

feature Name of the feature being affected.

keyword=value Feature name modifier to denote a group of licenses. See [“Feature Specification”](#) for details.

type One of USER, HOST, DISPLAY, INTERNET, PROJECT, GROUP, or HOST_GROUP. See [“Type Specification”](#) for details.

name Name of an item of type *type* for which license usage is included.

group_name Name of the group for which license usage is included.

To include user “bob” in the list of users able to use feature “f1”:

```
INCLUDE f1 USER bob
```

Note INCLUDE is required for USER_BASED or HOST_BASED features. The system administrator specifies which users are allowed to use the product, via INCLUDE, and the license limits the number of users that are INCLUDED.

INCLUDE_BORROW

```
INCLUDE_BORROW feature[:keyword=value] type {name / group_name}
```

Includes a user or pre-defined group of users, etc., in the list of who is allowed to borrow the BORROW feature. Anyone not in an INCLUDE_BORROW statement is not allowed to borrow licenses. EXCLUDE_BORROW supersedes INCLUDE_BORROW; conflicts between the EXCLUDE_BORROW list and the INCLUDE_BORROW list are resolved by the EXCLUDE_BORROW taking precedence.

<i>feature</i>	Name of the feature being affected.
<i>keyword=value</i>	Feature name modifier to denote a group of licenses. See “Feature Specification” for details.
<i>type</i>	One of USER, HOST, DISPLAY, INTERNET, PROJECT, GROUP, or HOST_GROUP. See “Type Specification” for details.
<i>name</i>	Name of an item of type <i>type</i> for which license borrowing is included.
<i>group_name</i>	Name of the group for which license borrowing is included.

To include user “tom” in the list of users able to borrow feature “f1”:

```
INCLUDE_BORROW f1 USER tom
```

INCLUDEALL

```
INCLUDEALL type {name / group_name}
```

Includes a user or pre-defined group of users, etc. in the list of who is allowed to use all features served by this vendor daemon. Anyone not in an INCLUDEALL statement is not allowed to use these features.

<i>type</i>	One of USER, HOST, DISPLAY, INTERNET, PROJECT, GROUP, or HOST_GROUP. See “Type Specification” for details.
-------------	--

<i>name</i>	Name of an item of type <i>type</i> for which license usage is included.
<i>group_name</i>	Name of the group to include.

To allow the user “jane” to use all features served by this vendor daemon:

```
INCLUDEALL USER jane
```

LINGER

```
LINGER feature[:keyword=value] seconds
```

A lingering license stays checked out for a specified period of time beyond its checkin or FLEXenabled application exit, whichever comes first. This option extends the default linger time configured by the vendor in the FLEXenabled application.

Note The vendor must have enabled this feature in the FLEXenabled application for it to work. Contact your software vendor to find out if this feature is implemented.

<i>feature</i>	Name of the feature.
<i>keyword=value</i>	Feature name modifier to denote a group of licenses. See “Feature Specification” for details.
<i>seconds</i>	Number of seconds the license lingers. The vendor sets a minimum value. If you specify a value for <i>seconds</i> that is smaller than the vendor’s minimum, the minimum is used.

To set the linger value for feature “f1” to one hour (3600 seconds):

```
LINGER f1 3600
```

The actual linger time varies somewhat since the vendor daemon checks all lingering licenses just once per minute. If, however, a new license request is made that would otherwise be denied, a check of the lingering licenses is made immediately to attempt to satisfy the new request.

MAX

```
MAX num_lic feature[:keyword=value] type {name | group_name}
```

Limits usage for a group or user.

<i>num_lic</i>	Usage limit for this user or group.
----------------	-------------------------------------

<i>feature</i>	Feature this limit applies to.
<i>keyword=value</i>	Feature name modifier to denote a group of licenses. See “Feature Specification” for details.
<i>type</i>	One of USER, HOST, DISPLAY, INTERNET, PROJECT, GROUP, or HOST_GROUP. See “Type Specification” for details.
<i>name</i>	Name of an item of type <i>type</i> for which usage is limited.
<i>group_name</i>	Name of the group to limit.

For example, to limit the user `jan` to 5 licenses for feature `f1`, include the following line in the option file:

```
MAX 5 f1 USER jan
```

MAX_BORROW_HOURS

```
MAX_BORROW_HOURS feature[:keyword=value] num_hours
```

Changes the maximum period a license can be borrowed from that specified in the license certificate for *feature*. The new period must be less than that in the license certificate. If multiple MAX_BORROW_HOURS keywords appear in the options file, only the last one is applied to *feature*.

<i>feature</i>	Feature this borrow period applies to. The license certificate for <i>feature</i> must have BORROW enabled.
<i>keyword=value</i>	Feature name modifier to denote a group of licenses. See “Feature Specification” for details.
<i>num_hours</i>	Number of hours in the new borrow period. This value must be less than that specified in the license certificate for feature (the default, if not specified, is 168 hours).

MAX_OVERDRAFT

```
MAX_OVERDRAFT feature[:keyword=value] num_lic
```

Limits OVERDRAFT license usage below the OVERDRAFT allowed by the license file.

<i>feature</i>	Feature this limit applies to.
----------------	--------------------------------

<i>keyword=value</i>	Feature name modifier to denote a group of licenses. See “Feature Specification” for details.
<i>num_lic</i>	Usage limit for this user or group.

NOLOG

```
NOLOG { IN | OUT | DENIED | QUEUED }
```

Suppresses logging the selected type of event in the debug log file.

To turn off logging of checkins:

```
NOLOG IN
```

To turn off logging of checkouts and queued requests two separate NOLOG lines are required:

```
NOLOG DENIED
```

```
NOLOG QUEUED
```

Note License administrators use this option to reduce the size of the debug log file. However, it can reduce the usefulness of the debug log in debugging license server system problems.

See also [“lmswitch.”](#)

REPORTLOG

```
REPORTLOG [+]report_log_path
```

REPORTLOG specifies the report log file for this vendor daemon. It is recommended preceding the *report_log_path* with a + character to append logging entries, otherwise the file is overwritten each time the daemon is started.

On Windows, pathnames which include spaces have to be enclosed in double quotes. If *lmgrd* is started as a service, the default location for the report log file is the *c:\winnt\System32* folder unless a fully qualified path is specified.

Note FLEXnet Manager, a separate product available from Macrovision, is used to process FLEXnet Licensing report log files. FLEXnet Manager processes only report log files, not debug log files.

Reporting on Projects with LM_PROJECT

The FLEXnet Manager report writer reports on “projects.” A project is set up by having all users working on the same project set their *LM_PROJECT* environment variable (or registry on Windows) to a string that describes the project. FLEXnet Manager groups usage by project, as defined by what *LM_PROJECT* was set to when the application was run.

See Also

- [“Configuring the License Server Manager as a Windows Service”](#)
- [Appendix D, “FLEXnet Licensing Environment Variables”](#)
- [Appendix F, “The Report Log File”](#)

RESERVE

```
RESERVE num_lic feature[:keyword=value] type {name | group_name}
```

Reserves licenses for a specific user.

<i>num_lic</i>	Number of license to reserve for this user or group.
<i>feature</i>	Feature or package this reservation applies to.
<i>keyword=value</i>	Feature name modifier to denote a group of licenses. See “Feature Specification” for details.
<i>type</i>	One of USER, HOST, DISPLAY, INTERNET, PROJECT, GROUP, or HOST_GROUP. See “Type Specification” for details.
<i>name</i>	Name of an item of type <i>type</i> for which license usage is reserved.
<i>group_name</i>	Name of group for which license usage is reserved.

To reserve one license of feature “f1” for user “me1”:

```
RESERVE 1 f1 USER me1
```

If you want to reserve a license for *each* of several users or groups, you must use a separate RESERVE line for each user or group. If a package name is specified, all components that comprise the package are reserved.

Note Any licenses reserved for a user are dedicated to that user. Even when that user is not actively using the license it is unavailable to other users. However, a RESERVED license does not cause usage to be reported by FLEXnet Manager if the license is not actually in use.

TIMEOUT

```
TIMEOUT feature[:keyword=value] seconds
```

Sets the time after which an inactive license is freed and reclaimed by the vendor daemon.

Note The vendor must have enabled this feature in the FLEXenabled application for it to work. Contact your software vendor to find out if this feature is implemented.

<i>feature</i>	Name of the feature.
<i>keyword=value</i>	Feature name modifier to denote a group of licenses. See “Feature Specification” for details.
<i>seconds</i>	Number of seconds after which inactive license is reclaimed. The vendor sets a minimum value. If you specify a value for <i>seconds</i> that is smaller than the vendor’s minimum, the minimum is used.

To set the timeout for feature “f1” to one hour (3600 seconds):

```
TIMEOUT f1 3600
```

TIMEOUT checks in the licenses if the FLEXenabled application has been inactive for a period longer than the specified time period. The daemon declares a process inactive when it has not received heartbeats from it; whereas, an active FLEXenabled application sends heartbeats.

A TIMEOUT line must be present in the options file in order to take advantage of the vendor-enabled timeout feature.

TIMEOUTALL

```
TIMEOUTALL seconds
```

Same as TIMEOUT, but applies to all features.

How the Vendor Daemon Uses the Options File

When the vendor daemon is started by `lmgrd`, the vendor daemon reads its options file. There is only one options file per vendor daemon and each vendor daemon needs its own options file. For any changes in an options file to take effect, the vendor daemon must read its options file. The `lmreread` utility causes the vendor daemon to reread its options file.



FLEXNET LICENSING VERSION NOTES

- The `lmreread` utility enhanced in v8.0 vendor daemon so that it causes the vendor daemon to reread the options file. If you are using earlier versions, the vendor daemon must be stopped and restarted in order for the options file to be reread.
-

Rules of Precedence in Options Files

Rules of precedence take effect when `INCLUDE` and `EXCLUDE` statements are combined in the same options file and control access to the same features. The following define the precedence when both types of statements appear together:

- If there is only an `EXCLUDE` list, everyone who is not on the list is allowed to use the feature.
- If there is only an `INCLUDE` list, only those users on the list is allowed to use the feature.
- If neither list exists, everyone is allowed to use the feature.
- The `EXCLUDE` list is checked before the `INCLUDE` list; someone who is on both lists is not allowed to use the feature.

Once you create an `INCLUDE` or `EXCLUDE` list, everyone else is *implicitly* outside the group. This feature allows you, as an administrator, the ability to control licenses without having to *explicitly* list each user that you wish to allow or deny access to. In other words, there are two approaches; you either:

- Give most users access and list only the exceptions, or
- Severely limit access and list only the those users that have access privileges

Options File Examples

The following information gives some examples of options files intended to illustrate ways to effectively control access to your licenses.

Simple Options File Example

```
RESERVE 1 compile USER robert
RESERVE 3 compile HOST mainline
EXCLUDE compile USER lori
NOLOG QUEUED
```

This options file:

- Reserves one license for the feature “compile” for the user “robert.”
- Reserves three licenses for the feature “compile” for anyone on the system with the host name “mainline.”

- Prevents the user “lori” from using the “compile” feature on any machine on the network.
- Causes QUEUED messages to be omitted from the debug log file.

The sum total of the licenses reserved must be less than or equal to the number of licenses specified in the FEATURE line. In the example above, there must be a minimum of four licenses on the “compile” FEATURE line. If fewer licenses are available, only the first set of reservations (up to the license limit) is used.

If this data were in file `/a/b/sampled/licenses/sampled.opt`, then modify the license file VENDOR line as follows:

```
VENDOR sampled /etc/sampled /sample_app/sampled/licenses/sampled.opt
```

Limiting Access for Multiple Users

Each INCLUDE, INCLUDEALL, INCLUDE_BORROW, EXCLUDE, EXCLUDEALL, EXCLUDE_BORROW, MAX, and RESERVE line must have a single user name (or group) listed. To affect more than one user name create a GROUP. For example to exclude “bob,” “howard,” and “james” from using the feature called “toothbrush,” create the following options file:

```
EXCLUDE toothbrush USER bob
EXCLUDE toothbrush USER howard
EXCLUDE toothbrush USER james
```

However, there is an easier way. Create a GROUP and exclude the list of users from using the feature. Like the previous example, the following options file excludes “bob,” “howard,” and “james” from using the feature called “toothbrush”:

```
# First define the group "Hackers"
GROUP Hackers bob howard james
# Then exclude the group
EXCLUDE toothbrush GROUP Hackers
```

Now when you want to allow or deny access to any feature to that group, you have an alias list to make it simple.

Use HOST_GROUP to allow, deny, or reserve licenses for multiple hosts. For example, to exclude all users logged in on the hosts “fred” and “barney” from using a feature called “f1,” add these lines to your options file:

```
HOST_GROUP writers fred barney
EXCLUDE f1 HOST_GROUP writers
```

See Also

- [“HOST_GROUP”](#) for more information about defining groups

EXCLUDE Example

```
#First Define the group "painters"
GROUP painters picasso mondrian klee
EXCLUDE spell GROUP painters
EXCLUDE spell USER bob
EXCLUDE spell INTERNET 123.123.123.*
```

This options file:

- Prevents the users “picasso,” “mondrian,” and “klee” from using the feature “spell” on any machine on the network.
- Prevents the user “bob” from using the feature “spell” on any machine on the network.
- Prevents any user logged into a host with an IP address in the range 123.123.123.0 through 123.123.123.255 from using the feature “spell.”
- Allows any other user, as long as they are not on the excluded IP addresses, *and* they are not a member of the “painters” GROUP, *and* they are not “bob,” to use feature “spell” (by implication).

Note that “bob” could have been added to the group “painters.” However, “painters” might be used for some other purpose in the future so the license administrator chose to handle “bob” as a special case here. In this case, the two EXCLUDE statements concatenate to create a list of four users.

INCLUDE Example

```
INCLUDE paint USER picasso
INCLUDE paint USER mondrian
INCLUDE paint HOST bigbrush
```

This options file:

- Allows the user “picasso” to use the feature “paint” on any machine on the network.
- Allows the user “mondrian” to use the feature “paint” on any machine on the network.
- Allows any user, as long as they are on the host “bigbrush,” to use feature “paint.”
- Denies access to the feature “paint” to anyone except “picasso,” “mondrian,” or anyone from the host “bigbrush” (by implication).

The License Server Manager

6

The *license server manager*, `lmgrd`, is one of two FLEXnet Licensing components which comprise a license server system (the other being the vendor daemon). It handles the initial contact with FLEXenabled applications, passing the connection on to the appropriate vendor daemon. The purpose of the license server manager, `lmgrd`, is to:

- Start and maintain all the vendor daemons listed in the VENDOR lines of the license file.
- Refer application checkout (or other) requests to the correct vendor daemon.

A newer `lmgrd` can be used with an older vendor daemon or FLEXenabled application, but a newer vendor daemon or FLEXenabled application might not work properly with an older `lmgrd`. Always use the newest version of `lmgrd` as possible; it is available for download from www.macrovision.com.

Imgrd Command-Line Syntax

`lmgrd` is the main daemon for FLEXnet Licensing. When you invoke `lmgrd`, it looks for a license file which contains information about vendors and features and starts those vendor daemons.

Usage is:

```
lmgrd [-c license_file_list] [-l [+]debug_log_path]
      [-2 -p] [-local] [-x lmdown] [-x lmremove] [-z ] [-v] [-help]
```

where:

- | | |
|-----------------------------------|--|
| <code>-c license_file_list</code> | Use the specified license file(s). |
| <code>-l [+]debug_log_path</code> | Write debugging information to file <code>debug_log_path</code> . This option uses the letter <code>l</code> , not the numeral <code>1</code> . Prepending <code>debug_log_path</code> with the <code>+</code> character appends logging entries. See Appendix G, “The Debug Log File,” for more information on this file. |

<code>-2 -p</code>	Restricts usage of <code>lmdown</code> , <code>lmreread</code> , and <code>lmremove</code> to a FLEXnet Licensing administrator who is by default root. If there is a UNIX group called “lmadmin,” then use is restricted to only members of that group. If root is not a member of this group, then root does not have permission to use any of the above utilities. If <code>-2 -p</code> is used when starting <code>lmgrd</code> , no user on Windows can shut down the license server system with <code>lmdown</code> .
<code>-local</code>	Restricts the <code>lmdown</code> and <code>lmreread</code> commands to be run only from the same machine where <code>lmgrd</code> is running.
<code>-x lmdown</code>	Disable the <code>lmdown</code> command (no user can run <code>lmdown</code>). If <code>lmdown</code> is disabled, stop <code>lmgrd</code> via <code>kill pid</code> (UNIX) or stop the <code>lmgrd</code> and vendor daemon processes through the Windows Task Manager or Windows service. On UNIX, be sure the <code>kill</code> command does not have a <code>-9</code> argument.
<code>-x lmremove</code>	Disable the <code>lmremove</code> command (no user can run <code>lmremove</code>).
<code>-z</code>	Run in foreground. The default behavior is to run in the background. If <code>-l debug_log_path</code> is present, then no windows are used, but if no <code>-l</code> argument is specified, separate windows are used for <code>lmgrd</code> and each vendor daemon.
<code>-v</code>	Displays <code>lmgrd</code> version number and copyright and exits.
<code>-help</code>	Displays usage information and exits.

Starting the License Server Manager on UNIX Platforms

If any licenses in the license file are counted (license count > 0), the license server manager, and hence the license server system, must be started before the FLEXenabled application can be used.

The license server manager, `lmgrd`, is started either manually on the command line or automatically at system startup. Both methods are discussed in the following sections.

Note Start `lmgrd` only on the server machine specified on the `SERVER` line in the license file.

If you are running three-server redundant license server systems, maintain an identical copy of the license file (as well as the `lmgrd` and the vendor daemons binaries) locally on each server machine rather than on a file server. If you do not do this, you lose all the advantages of having redundant servers, since the file server holding these files becomes a single point of failure.

Manually

Start `lmgrd` from the UNIX command line using the following syntax:

```
lmgrd -c license_file_list -L [+]debug_log_path
```

where

- `license_file_list` is one or more of the following:
 - the full path to a single license file
 - a directory, where all files named `*.lic` in that directory are used
 - `debug_log_path` is the full path to the debug log file
- Prepending `debug_log_path` with the `+` character appends logging entries.

Start `lmgrd` by a user other than “root”, since processes started by root can introduce security risks. If `lmgrd` must be started by the root user, use the `su` command to run `lmgrd` as a non-privileged user:

```
su username -c "lmgrd -c license_file_list -l debug_log_path"
```

where `username` is a non-privileged user. You must ensure that the vendor daemons listed in the license file have execute permissions for `username`. The paths to all the vendor daemons in the license file are listed on each `VENDOR` line.

Automatically

On UNIX, edit the appropriate boot script, which may be `/etc/rc.boot`, `/etc/rc.local`, `/etc/rc2.d/Sxxx`, `/sbin/rc2.d/Sxxxx`, etc. Include commands similar to the following. See the notes following for a full explanation.

```
/bin/su daniel -c 'echo starting lmgrd > \  
/home/flexlm/v5.12/hp700_u9/boot.log'
```

```
/bin/nohup /bin/su daniel -c 'umask 022; \  
/home/flexlm/v5.12/hp700_u9/lmgrd -c \  
/home/flexlm/v5.12/hp700_u9/license.dat >> \  
/home/flexlm/v5.12/hp700_u9/boot.log'
```

```
/bin/su daniel -c 'echo sleep 5 >> \  
/home/flexlm/v5.12/hp700_u9/boot.log'
```

```
/bin/sleep 5
```

```
/bin/su daniel -c 'echo lmdiag >>\
/home/flexlm/v5.12/hp700_u9/boot.log'

/bin/su daniel -c '/home/flexlm/v5.12/hp700_u9/lmdiag -n -c\
/home/flexlm/v5.12/hp700_u9/license.dat >> \
/home/flexlm/v5.12/hp700_u9/boot.log'

/bin/su daniel -c 'echo exiting >>\
/home/flexlm/v5.12/hp700_u9/boot.log'
```

Please note the following about how this script was written:

- All paths are specified in full, because no paths are assumed at boot time.
- Because no paths are assumed, the vendor daemon must be in the same directory as `lmgrd`, or the `VENDOR` lines in the license file must be edited to include the full path to the vendor daemon.
- The `su` command is used to run `lmgrd` as a non-root user, “daniel.” It is recommended that `lmgrd` not be run as “root,” since it is a security risk to run any program as “root” that does not require root permissions. `lmgrd` does not require root permissions.
- Daniel has a `cs`h login, so all commands executed as “daniel” must be in `cs`h syntax. All commands not executed as “daniel” must be in `/bin/sh` syntax, since that is what is used by the boot scripts.
- The use of `nohup` and `sleep` are required on some operating systems, notably HP-UX and Digital UNIX. These are not needed on Solaris and some other operating systems, but are safe to use on all.
- `lmdiag` is used as a diagnostic tool to verify that the server is running and serving licenses.

Note This does not start the daemon until you reboot your license server machine.

Starting the License Server Manager on Windows

Manually from the Command Line

Start `lmgrd` as an application from a Windows command shell using the following syntax:

```
C:\flexlm> lmgrd -c license_file_list -L [+]debug_log_path
```

where

- `license_file_list` is one or more of the following:
 - the full path to a single license file
 - a directory, where all files named `*.lic` in that directory are used
 - `debug_log_path` is the full path to the debug log file
- Prepending `debug_log_path` with the `+` character appends logging entries.

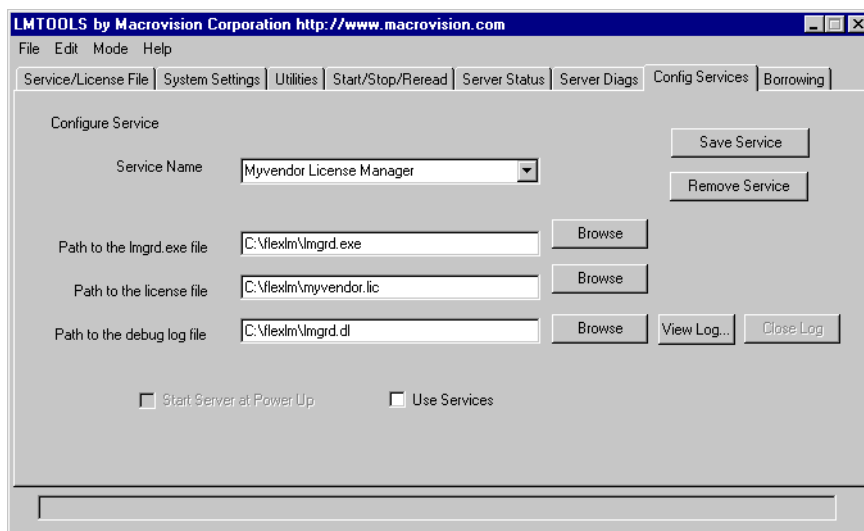
Spaces in pathnames require double quotes around the path.

On Windows, `lmgrd` can be installed as a service to allow it to be started and stopped through a user interface and run in the background.

Configuring the License Server Manager as a Windows Service

To configure a license server system as a service, you must have Administrator privileges:

1. Run LMTTOOLS.
2. Click the Configuration using Services radio button, then click the Config Services tab.
3. In the Service Name, type the name of the service that you want to define, for example, Myvendor License Manager.
4. In the Path to the `lmgrd.exe` file field, enter or browse to `lmgrd.exe` for this license server system.
5. In the Path to the license file field, enter or browse to the license file for this license server system.
6. In the Path to the debug log file, enter or browse to the debug log file that this license server system writes. Prepending the debug log file name with the `+` character appends logging entries. The default location for the debug log file is the `c:\winnt\System32` folder. To specify a different location, make sure you specify a fully qualified path.



7. To save the new Myvendor License Manager service, click the Save Service button.

Manually from LMTTOOLS

A graphical user interface to the license server manager tools is provided called LMTTOOLS. Some of the functions LMTTOOLS performs include:

Chapter 6 - The License Server Manager

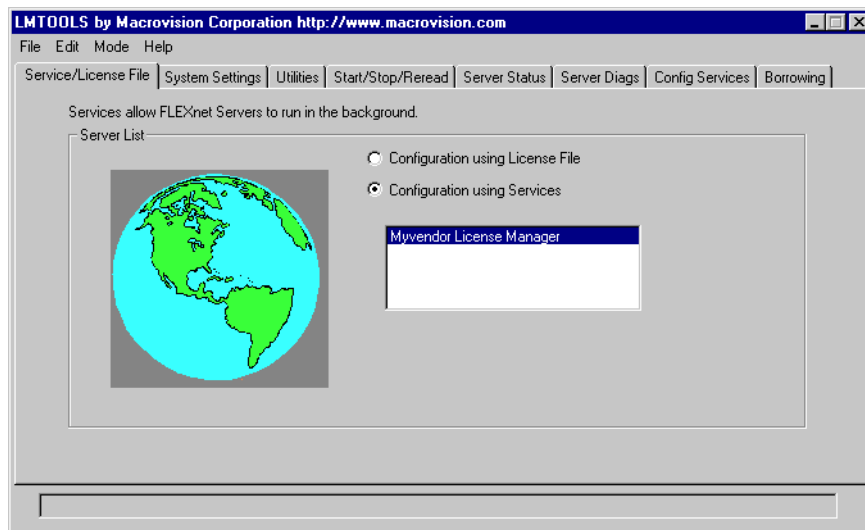
Starting the License Server Manager on Windows

- starting, stopping, and configuring FLEXnet license server systems
- getting system information, including hostids
- getting server status

In order to control the operation of `lmgrd` from the LMTOOLS user interface, you first must configure it as a license server manager service. Follow the procedure in “[Configuring the License Server Manager as a Windows Service](#)” before proceeding.

Once the license server manager service is configured, `lmgrd` is started by starting the service from the LMTOOLS interface:

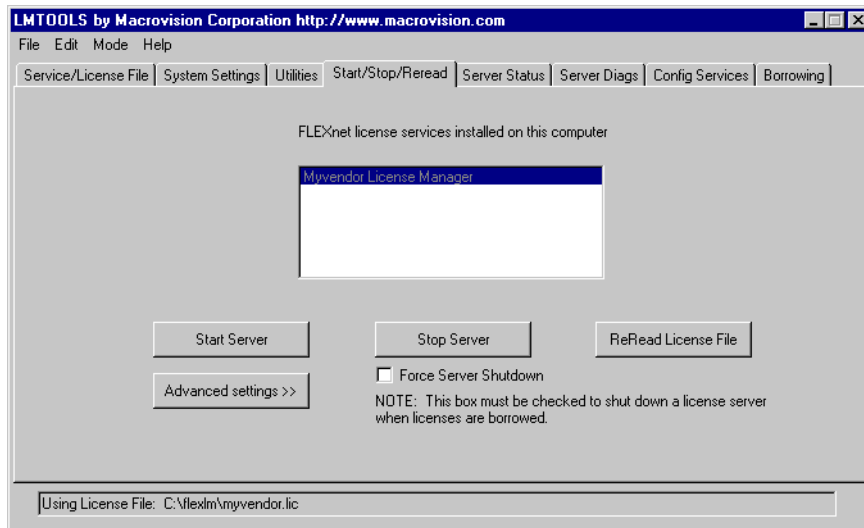
1. Start LMTOOLS.



LMTOOLS appears with the Service/License File tab open.

2. Click the Configuration using Services radio button.
3. Select the service name from the list presented in the selection box. In this example, the service name is Myvendor License Manager.

4. Click the Start/Stop/Reread tab.



5. Start Myvendor License Manager by clicking the Start Server button.

Myvendor License Manager license server system starts and writes its debug log output to `c:\flexlm\lmgrd.dl`.

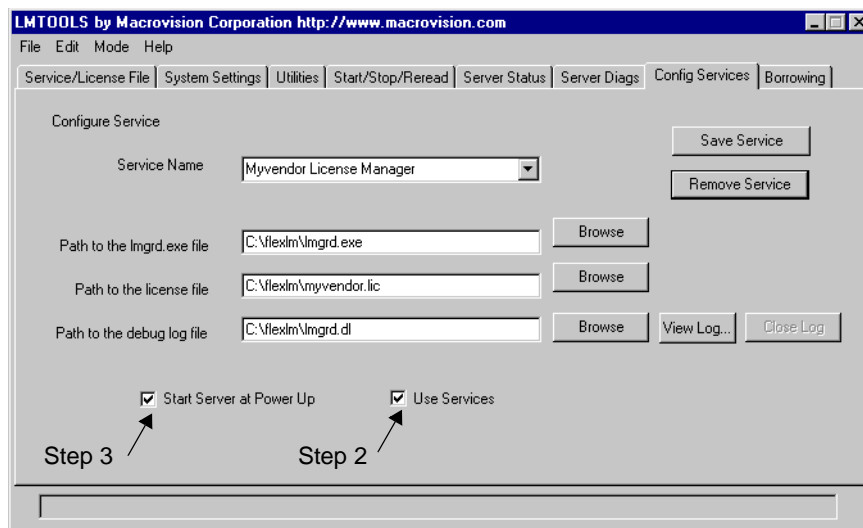
Automatically at System Start Up

In order for `lmgrd`, and hence the license server system, to start up automatically at system start up time, you first must configure it as a license server manager service. Follow the procedure in [“Configuring the License Server Manager as a Windows Service”](#) before proceeding. Then continue:

Chapter 6 - The License Server Manager

Starting the License Server Manager on Windows

1. With LMTOOLS started and the desired service name selected, click the Config Services tab.



2. Make this license server manager a Windows service: check the Use Services check box (otherwise, it becomes a FLEXnet Licensing service).
3. Configure it to start at system startup time by checking the Start Server at Power Up check box.

From now on, when the machine is rebooted, this license server manager starts automatically as a Windows service.

License Administration Tools

7

FLEXnet Licensing provides utilities for the license administrator to help manage the licensing activities on the network. Always use the newest version of the utilities as possible; they are available for download from www.macrovision.com.

Table 7-1 lists these utilities.

Table 7-1: License Administration Utilities

Utility	Description
lmborrow	Supports license borrowing.
lmdiag	Diagnoses license checkout problems.
lmdown	Gracefully shuts down selected license daemons (both <code>lmgrd</code> and all vendor daemons) on the license server machine (or on all three machines in the case of three-server redundant servers).
lmhostid	Reports the hostid of a system.
lminstall	Converts license files between different formats.
lmnewlog	Moves existing report log information to a new file name and starts a new report log file with existing file name.
lmpath	Allows users direct control over license file path settings.
lmremove	Releases a hung license to the pool of free licenses.
lmreread	Causes the license daemon to reread the license file and start any new vendor daemons.
lmstat	Displays the status of a license server system.
lmswitch	Controls debug log location and size.
lmswitchr	Switches the report log to a new file name.
lmver	Reports the FLEXnet Licensing version of a library or binary file.



FLEXNET LICENSING VERSION NOTES

- The `lmpath` utility introduced in the v7.0 utilities.
 - The `lmborrow` utility introduced in the v8.0 utilities.
 - The `lmswitch` utility introduced in v8.0 vendor daemon.
 - The `lmswitchr` utility introduced in v8.0 vendor daemon.
-

Running Administration Tools

All FLEXnet Licensing utilities are packaged as a single executable called `lmutil`. `lmutil` is either installed as individual commands (either by creating links to the individual command names, or making copies of `lmutil` as the individual command names), or as a wrapper that runs the individual command as `lmutil command`. For example, `lmutil lmstat`, or `lmutil lmdown`.

On Windows systems, the `lmutil command` form of the commands are available. There is also a graphical user interface available for these commands —see [“License Administration Tools—LMTOOLS for Windows.”](#)

Universal Imutil Arguments

The following are valid arguments for most `lmutil` utilities:

<code>-c license_file_path</code>	Most <code>lmutil</code> utilities need to know the path to the license file. This is specified with a <code>-c license_file_path</code> argument, or by setting the <code>LM_LICENSE_FILE</code> environment variable. Otherwise, the default location is used. The utilities also honor all <code>VENDOR_LICENSE_FILE</code> environment variables. Some utilities take more than one license file path in a license-file list separated by colons on UNIX and semi-colons on Windows. Pathnames which include spaces have to be enclosed in double quotes.
<code>-help</code>	Displays usage information and exits.
<code>-v</code>	Displays the FLEXnet Licensing version of the utility and exits.
<code>-verbose</code>	Displays longer description for all errors found.



FLEXNET LICENSING VERSION NOTES

- `VENDOR_LICENSE_FILE` environment variable honored in utilities starting with v7.0 utilities.
 - `-verbose` option introduced in v6.0 of the utilities.
-

lmborrow

`lmborrow` supports borrowing of licenses that contain the `BORROW` attribute. It must be run on the machine where licenses are borrowed. It is used to perform the following:

- Initiating borrowing by setting the borrow period
- Clearing the borrow period
- Determining borrow status
- Returning a borrowed license early

Initiating Borrowing

To initiate borrowing, the user sets the borrow period by running `lmborrow` from the command line or through `LMTOOLS`:

```
lmborrow {vendor | all} enddate [time]
```

where:

<i>vendor</i>	The vendor daemon name that serves the licenses to be borrowed, or <code>all</code> specifies all vendor daemons in that license server system.
<i>enddate</i> [<i>time</i>]	Date the license is to be returned in <code>dd-mm-yyyy</code> format. <i>time</i> is optional and is specified in 24-hour format (<code>hh:mm</code>) in the FLEXenabled application's local time. If <i>time</i> is unspecified, the checkout lasts until the end of the given end date.

For example:

```
lmborrow sampled 20-aug-2001 13:00
```

This has the effect of setting `LM_BORROW` with the borrow period in either the registry (Windows) or in `$HOME/.flexlmborrow` (UNIX).

To borrow licenses for the desired vendor, *on the same day and the same machine* that the user runs `lmborrow`, run the application(s) to check out the license(s). If you run the application(s) more than once that day, no duplicate licenses are borrowed. No licenses are borrowed if the application is run on a day different than the date borrowing is initiated.

In addition to the `lmborrow` utility, there are other ways to initiate borrowing:

- Using the borrowing interface in application, if provided in the application.
- Setting the `LM_BORROW` environment variable directly.

See “[Initiating License Borrowing](#)” for more information on these other ways.

Clearing the Borrowed License Setting

To clear the `LM_BORROW` setting in the registry or `$HOME/.flexlmborrow`, issue the command:

```
lmborrow -clear
```

Clearing the `LM_BORROW` setting stops licenses from being borrowed until borrowing is initiated again. A user might run `lmborrow -clear` after he has borrowed licenses for features that are used offline if—before disconnecting from the network—he wants to run an application that checks out additional features, served by *vendor*, that are not meant to be borrowed. Clearing `LM_BORROW` does *not* change the status for already-borrowed licenses.

Determining Borrowed License Status

To print information about borrowed features, issue the following command on the machine from which they are borrowed:

```
lmborrow -status
```

The borrowing system does not have to be connected to the network to determine the status.

Returning a Borrowed License Early

To return a borrowed license early, first reconnect the borrowing system back to the network and then, from the same machine that initiated the borrowing, issue the command:

```
lmborrow -return [-fqdn][-c license_file_list] [-c display] feature
```

where:

`-fqdn`

Directs `lmborrow` to access the borrowing system using its fully qualified host name. Use this option if the license was borrowed based on the fully qualified host name, rather than the relative distinguished name. Use `lmstat` to determine the format of the host name used when the license was borrowed.

<code>-c license_file_list</code>	Use the specified license file(s). In some configurations, the license file needs to be specified in order to return the license file early.
<code>-d display</code>	Used to specify the display from which the borrow was initiated. Required if your current display is different than what was used to initiate the borrow. On Windows, it is the system name or, in the case of a terminal server environment, the terminal server client name. On UNIX, it is in the form <code>/dev/ttyxx</code> or the X-Display name.
<code>feature</code>	The name of the borrowed feature to be returned early. Use <code>lmborrow -status</code> to get a list of borrowed feature names.

Returning the license early has the effect of clearing the LM_BORROW setting for the vendor daemon that serves the returned license.

If the borrowing system is not placed back on the network before attempting the early return, the license is not returned and LM_BORROW is kept intact. Additionally, an error message is issued to the end user with notification that the system needs to be connected to the network.



FLEXNET LICENSING VERSION NOTES

- Early borrowed-license return introduced in v8.3 utilities.
-

lmdiag

lmdiag allows you to diagnose problems when you cannot check out a license.

Usage is:

```
lmdiag [-c license_file_list] [-n] [feature[:keyword=value]]
```

where:

<i>-c license_file_list</i>	Diagnose the specified file(s).
<i>-n</i>	Run in non-interactive mode; lmdiag does not prompt for any input in this mode. In this mode, extended connection diagnostics are not available.
<i>feature</i>	Diagnose this feature only.
<i>keyword=value</i>	If a license file contains multiple lines for a particular feature, select a particular line for lmdiag to report on. For example: lmdiag f1:HOSTID=12345678 attempts a checkout on the line with the hostid "12345678." <i>keyword</i> is one of the following: VERSION, HOSTID, EXPDATE, KEY, VENDOR_STRING, ISSUER

If no *feature* is specified, lmdiag operates on all features in the license file(s) in your list. lmdiag first prints information about the license, then attempts to check out each license. If the checkout succeeds, lmdiag indicates this. If the checkout fails, lmdiag gives you the reason for the failure. If the checkout fails because lmdiag cannot connect to the license server system, then you have the option of running "extended connection diagnostics."

These extended diagnostics attempt to connect to each TCP/IP port on the license server machine, and detects if the port number in the license file is incorrect. lmdiag indicates each TCP/IP port number that is listening, and if it is an lmgrd process, lmdiag indicates this as well. If lmdiag finds the vendor daemon for the feature being tested, then it indicates the correct port number for the license file to correct the problem.

See Also

- ["FLEXLM_DIAGNOSTICS."](#)

lmdown

The `lmdown` utility allows for the graceful shutdown of selected license daemons (both `lmgrd` and selected vendor daemons) on all machines.

Usage is:

```
lmdown -c license_file_list [-vendor vendor_daemon] [-q] [-all] [-force]
```

where:

<code>-c</code> <i>license_file_list</i>	Use the specified license file(s). Note that specifying <code>-c license_file_list</code> is always recommended with <code>lmdown</code>
<code>-vendor</code> <i>vendor_daemon</i>	Shut down only this vendor daemon. <code>lmgrd</code> continues running. Requires v6.0 <code>lmdown</code> and <code>lmgrd</code> .
<code>-q</code>	Don't prompt or print a header. Otherwise <code>lmdown</code> asks "Are you sure? [y/n]: ."
<code>-all</code>	If multiple servers are specified, automatically shuts down all of them. <code>-q</code> is implied with <code>-all</code> .
<code>-force</code>	If licenses are borrowed, <code>lmdown</code> runs only from the machine where the license server system is running, and then only if the user adds <code>-force</code> .

If `lmdown` encounters more than one server (for example if `-c` specifies a directory with many `*.lic` files) and `-all` is not specified, a choice of license server systems to shut down is presented.

Note On UNIX, do *not* use `kill -9` to shut down license server systems. On Windows, if you must use the Task Manager to kill the FLEXnet Licensing service, be sure to end the `lmgrd` process first, then all the vendor daemon processes.

When shutting down a three-server redundant license server system, there is a one-minute delay before the servers shut down. `lmdown` shuts down all three license server systems of a set of redundant license server systems. If you need to shut down one of a set of redundant license server systems (not recommended because you are left with two points of failure), you must kill both the `lmgrd` and vendor daemon processes on that license server machine.

You can protect the unauthorized execution of `lmdown` when you start up the license server manager, `lmgrd`. Shutting down the servers causes users to lose their licenses.

See Also

- [“lmgrd Command-Line Syntax”](#) for details about securing access to `lmdown`
- [“lmreread.”](#)



FLEXNET LICENSING VERSION NOTES

- `-all` option introduced in the v7.0 `lmdown` utility.
 - `-force` option introduced in the v8.0 `lmdown` utility.
-

lmhostid

The `lmhostid` utility returns the FLEXnet Licensing hostid of the current platform. Invoked without any arguments, `lmhostid` displays the default hostid type for current platform. Otherwise, the hostid corresponding to the requested *type* is displayed, if supported on the current platform.

Usage is:

```
lmhostid [-n] [-type] [-utf8]
```

Where:

- | | |
|--------------------|--|
| <code>-n</code> | Only the hostid, itself, is returned as a string, which is appropriate to use with <code>HOSTID=</code> in the license file. Header text is suppressed. |
| <code>-type</code> | One of the following hostid types.
If not specified, the default hostid for the current platform is displayed.
See Appendix A, “Hostids for FLEXnet Licensing-Supported Platforms,” for a list of the default types. |

Platform Dependent Hostids

- | | |
|----------------------|---|
| <code>-ether</code> | Ethernet address. |
| <code>-string</code> | String id. |
| <code>-vsn</code> | Volume serial number. (Windows platforms only) |
| <code>-flexid</code> | Parallel or USB FLEXid dongle identification. This is applicable only for those platforms that support FLEXid dongles. See “FLEXnet Licensing Hostids” for a complete list. |
| <code>-long</code> | 32-bit hostid. |

Platform Independent Hostids

-user	Current user name.
-display	Current display name. On Windows, it is the system name or, in the case of a terminal server environment, the terminal server client name. On UNIX, it is in the form /dev/ttyxx or the X-Display name.
-hostname	Current host name.
-internet	IP address of current platform in the form ###.###.###.###.
-utf8	The hostid is output as a UTF-8 encoded string rather than an ASCII string. If your hostid contains characters other than ASCII A through Z, a through z, or 0 through 9, use this option with lmhostid. To view a correct representation of the resulting hostid, use a utility, such as Notepad, that can display UTF-8 encoded strings.

The output of this command looks as follows:

```
lmhostid - Copyright (c) 1989, 2002 Macrovision Corporation
The FLEXlm hostid of this machine is "69021c89"
```

See Also

- [Appendix A, “Hostids for FLEXnet Licensing-Supported Platforms.”](#)

lminstall

Introduced in v6.0, lminstall is designed primarily for typing in decimal format licenses to generate a readable format license file.

Usage is:

```
lminstall [-i in_lic_file ] [-maxlen n] [-e err_file] [-o out_lic_file] \
          [-overfmt {2 | 3 | 4 | 5 | 5.1 | 6 | 7 | 7.1 | 8}] [-odecimal]
```

Normally, to convert from decimal to readable format, lminstall is used with no arguments; you are prompted for the name of the output license file. The default file name is today's date in *yyyymmdd.lic* format. Move this file to the application's default license file directory, if specified by the software vendor. Otherwise, use the `LM_LICENSE_FILE` or `VENDOR_LICENSE_FILE` environment variables to specify the directory where the *.lic files are located.

To finish entering, type `q` on a line by itself or enter two blank lines.

When an input file is specified with no output file specified, output goes to stdout; if neither input nor output file is specified, `lminstall` assumes that input comes from stdin and prompts the user for an output file name.

`lminstall` is also used to convert licenses from readable to decimal format, and between different versions of FLEXnet license formats.

To convert from readable to decimal:

```
lminstall -i in_lic_file -o out_lic_file -odecimal
```

To convert to v5.1 format:

```
lminstall -i in_lic_file -o out_lic_file -overfmt 5.1
```

To enforce a maximum line length of, for example, 50 characters:

```
lminstall -maxlen 50
```

Conversion errors are reported as necessary and can be written to a file by specifying `-e err_file`. `lminstall` has a limit of 1000 lines of input.

lmnewlog

The `lmnewlog` utility switches the report log file by moving the existing report log information to a new file, then starting a new report log with the original report log file name. If you rotate report logs with `lmnewlog` instead of `lmswitchr`, you do not have to change the file name in the `REPORTLOG` line of the vendor's options file. Requires a v7.1+ vendor daemon.

Usage is:

```
lmnewlog [-c license_file_list] feature renamed_report_log
```

or:

```
lmnewlog [-c license_file_list] vendor renamed_report_log
```

where:

<code>-c license_file_list</code>	Use the specified license file(s).
<code>feature</code>	Any feature in this license file.
<code>vendor</code>	Vendor daemon in this license file.
<code>renamed_report_log</code>	New file path where existing report log information is to be moved.

Impath

The `lmpath` utility allows direct control over FLEXnet license path settings. It is used to add to, override, or get the current license path settings.

Usage is:

```
lmpath {-add | -override} {vendor | all} license_file_list
```

where:

<code>-add</code>	Prepends <i>license_file_list</i> to the current license-file list or creates the license-file list, if it doesn't exist, initializing it to <i>license_file_list</i> . Duplicates are discarded.
<code>-override</code>	Overrides the existing license-file list with <i>license_file_list</i> . If <i>license_file_list</i> is the null string, "", the specified list is deleted. <ul style="list-style-type: none"> <code>lmpath -override all ""</code> Deletes the value of <code>LM_LICENSE_FILE</code>. <code>lmpath -override vendor ""</code> Deletes the value of <code>VENDOR_LICENSE_FILE</code>.
<i>vendor</i>	A vendor daemon name. Effects the value of <code>VENDOR_LICENSE_FILE</code> .
<code>all</code>	Refers to all vendor daemons. Effects the value of <code>LM_LICENSE_FILE</code> .
<i>license_file_list</i>	A colon-separated list on UNIX and a semi-colon-separated list on Windows. If <i>license_file_list</i> is the null string, "", then the specified entry is deleted.

Note `lmpath` works by setting the FLEXnet Licensing registry entry on Windows or `$HOME/.flexlmrc` on UNIX.

To display the current license path settings, use:

```
lmpath -status
```

The following is displayed:

```
lmpath - Copyright (C) 1989-2002 Macrovision Corporation
Known Vendors:
```

```
demo:      ./counted.lic:./uncounted.lic
```

Other Vendors:

`/usr/local/flexlm/licenses/license.lic`

Note that where the path is set to a directory, all the *.lic files are listed separately.

lmremove

The `lmremove` utility allows you to remove a single user's license for a specified feature. If the application is active, it re-checks out the license shortly after it is freed by `lmremove`.

Usage is:

```
lmremove [-c license_file_list] feature user user_host display
```

or

```
lmremove [-c license_file_list] -h feature server_host port handle
```

where:

<code>-c license_file_list</code>	Specify license file(s).
<code>feature</code>	Name of the feature checked out by the user.
<code>user</code>	Name of the user whose license you are removing, as reported by <code>lmstat -a</code> .
<code>user_host</code>	Name of the host the user is logged into, as reported by <code>lmstat -a</code> .
<code>display</code>	Name of the display where the user is working, as reported by <code>lmstat -a</code> .
<code>server_host</code>	Name of the host on which the license server system is running.
<code>port</code>	TCP/IP port number where the license server system is running, as reported by <code>lmstat -a</code> .
<code>handle</code>	License handle, as reported by <code>lmstat -a</code> .

The `user`, `user_host`, `display`, `server_host`, `port`, and `handle` information must be obtained from the output of `lmstat -a`.

`lmremove` removes all instances of `user` on `user_host` and `display` from usage of `feature`. If the optional `-c license_file_list` is specified, the indicated file(s) is used as the license file.

The `-h` variation uses the *server_host*, *port*, and license *handle*, as reported by `lmstat -a`. Consider this example `lmstat -a` output:

```
joe nirvana /dev/tty5 (v1.000) (cloud9/7654 102), start Fri 10/29 18:40
```

In this example, the user is “joe,” the user host is “nirvana,” the display is “/dev/tty5,” the server host is “cloud9,” the TCP/IP port is “7654,” and the license handle is “102.”

To remove this license, issue one of the following commands:

```
lmremove f1 joe nirvana /dev/tty5
```

or

```
lmremove -h f1 cloud9 7654 102
```

When removing by handle, if licenses are grouped as duplicates, all duplicate licenses are also removed. If license lingering is set and `lmremove` is used to reclaim the license, `lmremove` starts, but does not override, the license’s linger time.

You can protect the unauthorized execution of `lmremove` when you start up the license server manager, `lmgrd`, because removing a user’s license is disruptive.

See Also

- [“lmgrd Command-Line Syntax”](#) for details about securing access to `lmremove`

lmreread

The `lmreread` utility causes the license server manager to reread the license file and start any new vendor daemons that have been added. In addition, all currently running vendor daemons are signaled to reread the license file and their end-user options files for changes in feature licensing information or option settings. If report logging is enabled, any report log data still in the vendor daemon’s internal data buffer is flushed. `lmreread` recognizes changes to server machine host names, but cannot be used to change server TCP/IP port numbers.

If the optional vendor daemon name is specified, only the named daemon rereads the license file and its end-user options file (in this case, `lmgrd` does not reread the license file).

Usage is:

```
lmreread [-c license_file_list] [-vendor vendor] [-all]
```

where:

<code>-c license_file_list</code>	Use the specified license file(s).
<code>-vendor vendor</code>	Only vendor daemon <i>vendor</i> rereads the license file and its options file. Additionally, <code>lmgrd</code> restarts <i>vendor</i> if necessary.

`-all` If more than one `lmgrd` is specified, instructs all `lmgrds` to reread.

Note If you use the `-c license_file_list` option, the license file(s) specified are read by `lmreread`, not by `lmgrd`; `lmgrd` rereads the file it read originally.

You can protect the unauthorized execution of `lmreread` when you start up the license server manager, `lmgrd`.

See Also

- [“lmgrd Command-Line Syntax”](#) for details about securing access to `lmreread`



FLEXNET LICENSING VERSION NOTES

- Ability for vendor daemon to participate in rereading of its option file introduced in v8.0 vendor daemon
-

lmstat

The `lmstat` utility helps you monitor the status of all network licensing activities, including:

- Daemons that are running
- License files
- Users of individual features
- Users of features served by a specific vendor daemon
- BORROW licenses borrowed

`lmstat` prints information that it receives from the license server system; therefore, it does not report on unserved licenses such as uncounted licenses. To report on an uncounted license, the license must be added to a served license file and the application must be directed to use the license server system for that license file (via `@host, port@host` or `USE_SERVER`). Queued users and licenses shared due to duplicate grouping are also not returned by `lmstat`.

Usage is:

```
lmstat [-a] [-c license_file_list] [-f [feature]] [-i [feature]] [-s[server]
      [-S [vendor]] [-t timeout_value]
```

where:

`-a` Displays all information.

<code>-c license_file_list</code>	Uses the specified license file(s).
<code>-f [feature]</code>	Displays users of <i>feature</i> . If <i>feature</i> is not specified, usage information for all features is displayed.
<code>-i [feature]</code>	Displays information from the FEATURE/INCREMENT line for the specified <i>feature</i> , or all features if <i>feature</i> is not specified.
<code>-s [server]</code>	Displays status of all license files listed in \$VENDOR_LICENSE_FILE or \$LM_LICENSE_FILE on <i>server</i> , or on all servers if <i>server</i> is not specified.
<code>-S [vendor]</code>	Lists all users of <i>vendor</i> 's features.
<code>-t timeout_value</code>	Sets connection timeout to <i>timeout_value</i> . This limits the amount of time lmstat spends attempting to connect to <i>server</i> .

The output of `lmstat -a` looks similar to:

```
License server system status: 27000@myhost1
License file(s) on myhost: install_dir/flexlm/v9.3/sun4_u5/counted.lic:
myhost: license server system UP (MASTER) v9.3
Vendor daemon status (on myhost1):

demo: UP v9.3
Feature usage info:
Users of fl: (Total of 4 licenses issued; Total of 1 license in use)
"fl" v1.0, vendor: demo
floating license
    daniel myhost2 19.36.18.26 (v1.0) (myhost1/27000 102), start Fri
        5/3 7:29
```

where:

daniel	<i>user</i>	User name.
myhost2	<i>user_host</i>	Host where user is running.
19.36.18.26	<i>display</i>	Display where user is running.
v1.0	<i>version</i>	Version of feature.
myhost1	<i>server_host</i>	Host where license server system is running.

27000	<i>port</i>	TCP/IP port on <i>server_host</i> where license server system is running.
102	<i>handle</i>	License handle.
start Fri 5/3 7:29	<i>checkout_time</i>	Time that this license was checked out.

The *user*, *user_host*, *display*, *server_host*, *port*, and *handle* information is used when removing licenses with `lmremove`.

Note `lmstat -a` is a potentially expensive command. With many active users, this command generates a lot of network activity.



FLEXNET LICENSING VERSION NOTES

- Ability to list all active users, using the `-A` option, available in `lmstat` utility, v8.3 and earlier.
-

lmswitch

The `lmswitch` utility switches the debug log file written by a particular vendor daemon by closing the existing debug log for that vendor daemon and starting a new debug log for that vendor daemon with a new file name. It also starts a new debug log file written by that vendor daemon if one does not already exist.

Usage is:

```
lmswitch [-c license_file_list] vendor new_debug_log
```

where:

<code>-c license_file_list</code>	Use the specified license file(s).
<code>vendor</code>	Vendor daemon in this license file.
<code>new_debug_log</code>	Path to new debug log file.

By default, debug log output from `lmgrd` and all vendor daemons started by that `lmgrd` get written into the same debug file. `lmswitch` allows companies to keep separate log files for different vendors and control the size of their debug log file.

If debug log output is not already directed to a separate file for this vendor daemon, `lmswitch` tells the vendor daemon to start writing its debug log output to a file, `new_debug_log`. If this vendor daemon is already writing to its own debug log, `lmswitch` tells the vendor daemon to close its current debug log file and start writing its debug log output to `new_debug_log`.

Note The effect of `lmswitch` continues only until the vendor daemon is shut down or its options file is reread via `lmreread`. When the vendor daemon is restarted or its options file is reread, it looks for a `DEBUGLOG` line in the options file to determine whether or not to write its debug log output into its own file and, if so, what file to write.

See Also:

- [“DEBUGLOG”](#)
- [“lmreread”](#)
- [Appendix G, “The Debug Log File”](#)

lmswitchr

The `lmswitchr` utility switches the report log file by closing the existing report log and starting a new report log with a new file name. It also starts a new report log file if one does not already exist.

Usage is:

```
lmswitchr [-c license_file_list] feature new_report_log
```

or with v5.0+ vendor daemon:

```
lmswitchr [-c license_file_list] vendor new_report_log
```

where:

<code>-c license_file_list</code>	Use the specified license file(s).
<code>feature</code>	Any feature in this license file.
<code>vendor</code>	Vendor daemon in this license file.
<code>new_report_log</code>	Path to new report log file.

If report logging is not enabled for the vendor daemon, `lmswitchr` tells it to start writing its report log output to `new_report_log`. If report logging is already enabled for the vendor daemon, `lmswitchr` tells the vendor daemon to close its report log file and start writing its new report log output to `new_report_log`.

Note The effect of `lmswitchr` continues only until the vendor daemon is shut down or its options file is reread via `lmreread`. When the vendor daemon is restarted or its options file is reread, it looks for a `REPORTLOG` line in the options file to determine whether or not to write report log output to a file and, if so, what file to write.

See Also:

- “[REPORTLOG](#)”
- “[lmnewlog](#)”
- “[lmreread](#)”
- [Appendix F, “The Report Log File”](#)

lmver

The `lmver` utility reports the FLEXnet Licensing version of a library or binary file.

Usage is:

```
lmver filename
```

where *filename* is one of the following:

- the name of an executable file built with FLEXnet Licensing
- `lmgrd`
- a license administration tool
- a vendor daemon

For example if you have an application called “spell,” type:

```
lmver spell
```

License Administration Tools—LMTOOLS for Windows

For the 32-bit Windows platforms, a graphical user interface to the license server manager tools is provided called LMTOOLS. Always use the newest version of LMTOOLS as possible; it is available for download from www.macrovision.com.

Some of the functions LMTOOLS performs include:

- starting, stopping, and configuring FLEXnet license server systems
- getting system information, including hostids
- getting server status

LMTOOLS has two modes in which to configure a license server system:

- Configuration using a license file
- Configuration using services

Configuration Using License File

Operations are performed on a particular license file. The file can be either local or remote. In this mode, you cannot start the `lmgrd` process, but you can do everything else. To configure this mode, perform the following:

1. Invoke LMTOOLS.
2. Click the Configuration using License File radio button.
3. Enter one or more the license file names or *port@host* specifications.

Configuration Using Services

Operations are performed on a service, which allows starting `lmgrd` processes local to the system on which LMTOOLS is running. For details on configuring services, see [“Configuring the License Server Manager as a Windows Service.”](#)

End users often want to use applications on computers that do not have a continuous connection to a FLEXnet license server system. These situations include:

- Working on a laptop
- Using a computer both at work and at home
- Working from several different computers not connected to a license server system

FLEXnet Licensing supports licenses that allow one of several kinds of mobile licensing:

- Node-locked to a laptop
- Node-locked to a FLEXid (Windows only)
- Node-locked to a FLEXid with FLOAT_OK keyword (Windows only)
- License borrowing with BORROW keyword
- Node-locked to a user name
- Fulfilled from a prepaid license pool

License rehosting is the consequence of an end user wanting to move a license without using one of these methods. This means a new node-locked license file is generated by the vendor for each new client computer. Rehosting incurs administrative overhead because the vendor is involved for each move.

Node-Locked to a Laptop Computer

If a license is to be used exclusively on one laptop computer, that license is simply node-locked to an address associated with that computer. The license file resides on the laptop computer.

Node-locked to a FLEXid (Windows Only)

If a license is to be moved between different Windows machines, it is node-locked to a FLEXid (a dongle that connects to a parallel or USB port). This license is moved between machines by installing a copy of the license file on each machine and moving the FLEXid from one machine to another. Since the license is tied to the FLEXid, only the machine with the FLEXid has use of the license.

Node-Locked to a FLEXid with FLOAT_OK (Windows Only)

This method of license mobility has an advantage over simply using a license node-locked to a FLEXid, because the FLEXid is attached to a license server machine and its license floats on the network. Licenses with a FLOAT_OK keyword that are node-locked to a FLEXid are supported only where both the FLEXenabled application and the license server system are running on Windows.

A vendor issues a license file with a FEATURE line node-locked to a FLEXid and containing the FLOAT_OK keyword and a FLEXid for that FEATURE line. One FEATURE line containing the FLOAT_OK keyword and one FLEXid is needed for each instance of a license that is mobile. When the FLEXid is attached to a license server machine, the license floats on the network. When the FLEXid is removed from the license server machine, the license is available only on the standalone computer.

This method supports parallel or USB FLEXids. Because it is simpler to attach multiple USB dongles to a computer, USB FLEXids may be preferable.

Initiating FLEXid with FLOAT_OK

A vendor issues the end user a FLEXid, a FLEXid driver installer, and a license file that contains a FEATURE line node-locked to that FLEXid containing the FLOAT_OK keyword. An end user then:

1. Installs the license file on the license server machine
2. Attaches all of the FLEXids to the license server machine
3. Installs the FLEXid driver on the license server machine
4. Starts the license server system or rereads the license file

While the FLEXids are attached to the license server machine, the node-locked licenses associated with them float on the network. Each of the FLOAT_OK uncounted node-locked FEATURE lines has a count of *one* while it is available on the network.

To transfer a license from the pool of floating licenses to a disconnected computer, the end user:

1. Copies the license file containing the FLOAT_OK node-locked FEATURE line from the license file on the license server machine to a license file on the client computer in the location where the FLEXenabled application expects to find its license file.
2. Moves the FLEXid matching the node-locked FEATURE line from the license server machine to the client computer. When the FLEXid is removed from the license server machine, this license is unavailable on the network.
3. Installs the FLEXid drivers on the client computer, if they are not already installed.
4. Disconnects the client computer from the network. Now the license is available on the computer with the FLEXid, even though that computer is disconnected from the network.

Returning a FLEXid with FLOAT_OK License

To return the license to the license server machine so it floats on the network again, the end user:

1. Removes the FLEXid from the client machine and replaces it on the license server machine.
2. Rereads the license file for the license server system that serves the floating version of the license by running `lmreread`. When the FLEXid is returned to the license server machine, the `FLOAT_OK` license does not float on the network again until `lmreread` is run.

FLEXid with FLOAT_OK Example

The following is a sample license file issued to a end-user site. It is shipped with two FLEXids: `FLEXID=7-b28520b9` and `FLEXID=7-b2857678`.

```
SERVER myhost ANY
VENDOR sampled
FEATURE f1 sampled 1.0 permanent uncounted FLOAT_OK \
        HOSTID=FLEXID=7-b28520b9 SIGN=123456789012
FEATURE f1 sampled 1.0 permanent uncounted FLOAT_OK \
        HOSTID=FLEXID=7-b2857678 SIGN=ABCDEF123456
```

The end user installs the license file and the two FLEXids on the license server machine. When attached to the license server machine, each uncounted `FLOAT_OK` license floats on the network and allows a single use. Therefore, up to two users can use “f1” on the end user’s network, except on the license server machine itself, where the license use is disallowed.

If an end user wants to work at home, the end user installs a license file that contains the `FEATURE` line node-locked to `FLEXID=7-b28520b9` (this only needs to be done once), transfers the FLEXid `FLEXID=7-b28520b9` from the license server machine to the client computer, and installs the FLEXid driver on the client computer (this also only needs to be done once). The end user disconnects the client computer from the network and uses the transferred `FLOAT_OK` license on the client computer. The license server system allows only the single remaining `FLOAT_OK` license to float on the network.

After returning the FLEXid to the license server machine, the end user (or the system administrator) runs `lmreread` so the returned license can float again.



FLEXNET LICENSING VERSION NOTES

- `FLOAT_OK` keyword introduced in v8.0 client library, license server manager, and vendor daemon. All components must be v8.0+ in order to use `FLOAT_OK`.
-

License Borrowing with BORROW

If a license is to be used on a computer that is intermittently connected to a license server system, that license can be issued as a floating license with the BORROW keyword. A BORROW license can be borrowed from a license server system via a special checkout and used later to run an application on a computer that is no longer connected to the license server system. License borrowing must be enabled by a vendor before an end user can borrow licenses.

With license borrowing, a vendor issues a floating license with a FEATURE line that contains the BORROW keyword. An end user specifies the expiration date a borrowed license is to be returned and runs the application while connected to the network which writes borrowing information on the client computer. The license server system keeps the borrowed license checked out. The FLEXenabled application automatically uses the local borrowing data to do checkouts during the borrow period. If enabled by the vendor, borrowed licenses can be returned early, that is, before the borrow period expires. Upon the earlier of either the expiration of the borrow period or the early return of a borrowed license, the local borrowing data no longer authorizes checkouts and the license server system returns the borrowed license to the pool of available licenses. No clock synchronization is required between the license server machine and the machine running the FLEXenabled application.

Initiating License Borrowing

If a vendor has enabled license borrowing by issuing a license file that contains a FEATURE line with the BORROW keyword, an end user initiates license borrowing in one of three ways:

- Using the borrowing interface in application, if provided in the application
- Running the `lmborrow` utility to set `LM_BORROW`
- Setting the `LM_BORROW` environment variable directly

Application Interface

The user initiates license borrowing this way only if the application provides a borrowing interface. Information about this is supplied by the vendor.

Running the Lmborrow Utility

`lmborrow` is one of the `lmutil/LMTOOLS` utilities. To initiate borrowing, the user runs `lmborrow` from the command line or through `LMTOOLS`:

```
lmborrow {vendor|all} enddate [time]
```

where *vendor* is the vendor daemon that serves the licenses to be borrowed, or `all` specifies all vendor daemons in the license server system. *enddate* is the date the license is to be returned in `dd-mm-yy` format. *time* is optional and is specified in 24-hour format (`hh:mm`) in the FLEXenabled application's local time. If *time* is unspecified, the checkout lasts until the end of the given end date.

For example:

```
lmborrow sampled 20-aug-2001 13:00
```


Setting the LM_BORROW Environment Variable Directly

The `lmborrow` utility is a user interface to set `LM_BORROW` in either the registry (Windows) or in `$HOME/.flexlmborrow` (UNIX). `LM_BORROW` can also be set directly as an environment variable:

```
today:{vendor|all}:enddate[:time]
```

where:

<i>today</i>	Today's date in <i>dd-mm-yyyy</i> format. Any checkouts done on this date create local borrow information. If a checkout is done on a different date than this date, no local borrowing information is created.
<i>vendor</i>	Vendor daemon that serves the licenses to be borrowed, or <i>all</i> specifies all vendor daemons in the license server system.
<i>enddate</i>	Date the license is to be returned in <i>dd-mm-yyyy</i> format.
<i>time</i>	Optional. <i>time</i> is specified in 24-hour format (<i>hh:mm</i>) in the FLEXenabled application's local time. If <i>time</i> is unspecified, the checkout lasts until the end of the given end date.

For example:

```
LM_BORROW=15-aug-2001:sampled:20-aug-2001:13:00
```

In this example, one or more licenses served by the `sampled` vendor daemon are borrowed on August 15, 2001, and are scheduled to be returned at 1 pm on August 20, 2001.

Borrowing a License

To borrow a license for a desired feature, *on the same day and the same machine* that the end user runs `lmborrow` or sets `LM_BORROW` (and while still connected to the network), the end user runs the application to check out and borrow the license. If the end user runs the application more than once that day, no duplicate license is borrowed. No license is borrowed if the application is run on a day different than the date borrowing was set to be initiated.

For example, say that today you want to borrow a license for the PageWizard feature for a week. The PageWizard feature is served by the `sampled` vendor daemon. Today, while you are connected to the network, run `lmborrow` or set `LM_BORROW` directly. For example:

```
lmborrow sampled enddate
```

Today, after you run `lmborrow`, while you are connected to the network, run the application that checks out a license for the PageWizard feature. After the license is checked out, close the application and disconnect your machine from the network. The license that you just checked

out stays checked out from the license server system until the borrow period expires—that license now is used on your disconnected machine until the borrow period expires. Once checked out, it remains checked out for the full borrow period. The borrow period cannot be renewed until the period has expired.

Clearing the Borrow Period

Once you have borrowed all the licenses that you need for the current borrow period (defined by the `LM_BORROW` environment variable), prevent licenses for any additional features from being borrowed by running `lmborrow -clear`. This clears the `LM_BORROW` setting in the registry (Windows) or `$HOME/.flexlmborrow` (UNIX). `lmborrow -clear` does *not* clear the local information about licenses you have already borrowed.

Checking Borrow Status

To print information about borrowed features, issue the following command on the machine from which they are borrowed:

```
lmborrow -status
```

The borrowing system does not have to be connected to the network to determine the status.

Returning a Borrowed License Early

To return a borrowed license before the borrow period expires, first reconnect the borrowing system back to the network and then, from the same machine that initiated the borrowing, issue the command:

```
lmborrow -return [-c license_file_list] feature
```

This option may or may not be allowed by your vendor. Check directly with your vendor to determine if early borrowed-license return is supported.

Returning the license early has the effect of clearing the `LM_BORROW` setting for the vendor daemon that serves the returned license.

Support for License Borrowing

See the following sections for more information about the utilities and end-user options that support license borrowing:

- [“lmborrow”](#)
- [“lmdown”](#)
- [“lmstat”](#)
- [“BORROW_LOWWATER”](#)
- [“EXCLUDE_BORROW”](#)
- [“INCLUDE_BORROW”](#)



FLEXNET LICENSING VERSION NOTES

- BORROW keyword introduced in v8.0 client library, license server manager, and vendor daemon. All components must be v8.0+ in order to use BORROW.
-

Node-locked to a User Name

If a license is to be used exclusively by one user on different machines, that license can be node-locked to the user's user name. The license file is copied to the different machines on which the user might work; the user's user name must be identical on each machine. For this method to be useful, individual user names in an organization need to be unique.

Fulfilled from a Prepaid License Pool

In this method, the end user buys a prepaid number of license-days from the vendor. The end user can then fulfill a license using a partial amount of the total license-days for the given borrow period, node-locked to a particular machine. For example, in preparation for a business trip (or even during a business trip), the end user fulfills a license that expires in 5 days that is node-locked to their laptop. Each fulfillment can be node-locked to a different machine (or even multiple times to the same machine), thus allowing mobility of license usage within the pre-paid number of license-days.

This model is like pay-per-use because each fulfillment is made from a decreasing number license-days. It is different than other pay-per-use models because, once node-locked to a machine, that machine is allowed unlimited use of the application until the license expires. This short-term license cannot be returned early; once fulfilled, those license-days cannot be refunded. Other pay-per-use models charge based on the number of times the application is used.

Hostids for FLEXnet Licensing-Supported Platforms A

FLEXnet Licensing uses different machine identifications for different machine architectures. For example, all Sun Microsystems machines have a unique hostid, whereas all DEC machines do not. For this reason, the ethernet address is used on some machine architectures as the hostid. An ethernet address is a 6-byte quantity, with each byte specified as two hexadecimal digits. Specify all twelve hex digits when using an ethernet address as a hostid. For example, if the ethernet address is “8:0:20:0:5:ac,” specify “0800200005ac” as the hostid.

Hostid Formats

Numeric, 32-bit hostids are normally used in hexadecimal format. On some systems, the system command returns the ID in decimal format. Use a “#” before the hostid to indicate a decimal number. For example, if the system command returns “2005771344,” FLEXnet Licensing accepts “#2005771344.” Alternatively, convert the decimal value to hexadecimal.

FLEXnet Licensing Hostids

The `lmhostid` utility prints the exact hostid that FLEXnet Licensing expects to use on any given machine. If your hostid contains characters other than ASCII A through Z, a through z, or 0 through 9, use the `-utf8` option with `lmhostid`. To view a correct representation of the resulting hostid, use a utility, such as Notepad, that can display UTF-8 encoded strings.

The following table lists alternate methods to obtain the required hostid for each machine architecture. FLEXnet Licensing also supports a group of special hostids and vendor-defined hostids.

Hardware Platform	Hostid	Type this command on the license server system:	Example
AIX (RS/6000, PPC)	32-bit hostid	<code>uname -m</code> (returns 000276513100), then remove last two digits, and use remaining last eight digits	02765131
DEC Alpha	ethernet address	<code>netstat -i</code>	080020005532

Appendix A - Hostids for FLEXnet Licensing-Supported Platforms
FLEXnet Licensing Hostids

Hardware Platform	Hostid	Type this command on the license server system:	Example
HP (32-bit and 64-bit platforms, non-Itanium)	32-bit hostid	<code>uname -i</code> and convert to hex, or prepend with #	778DA450 or #2005771344
HP (64-bit Itanium)	machine identification	<code>getconf \CS_PARTITION_IDENT</code> then prefix with "ID_STRING="	ID_STRING=9c766319-db72-d411-af62-0060b05e4c05
Mac OS X	ethernet address	<code>/sbin/ifconfig eth0</code> and remove colons from ether value	000A277EA17E
	FLEXid USB port dongle	<code>lmhostid -flexid</code>	FLEXID=9-b28520b9
Linux	ethernet address	<code>/sbin/ifconfig eth0</code> and remove colons from HWaddr	00400516E525
	FLEXid USB port dongle	<code>lmhostid -flexid</code>	FLEXID=9-b28520b9
SCO	Hostid String	<code>uname -x</code> (Serial is SCO00354), then prefix with "ID_STRING="	ID_STRING=SCO00354
SGI	32-bit hostid	<code>/etc/sysinfo -s</code> , convert to hex, or prefix #	69064C3C or #1762020412
SUN	32-bit hostid	<code>hostid</code>	170a3472
	ethernet address	<code>lmhostid -ether</code>	00400516E525

Hardware Platform	Hostid	Type this command on the license server system:	Example
Windows	ethernet address	lmhostid	00B0A9DF9A32
	Disk serial number	DIR C: (look for “Volume Serial Number is”, and remove “-”)	DISK_SERIAL_NUM=3e2e17fd
	FLEXid parallel or USB port dongle	lmhostid -flexid FLEXids are made available by your vendor. Your vendor can also provide you with an installer that installs drivers for all FLEXids. For parallel FLEXids, the parallel port must be configured in bi-directional mode.	FLEXID=8-b28520b9

Special FLEXnet Licensing Hostids

FLEXnet Licensing contains a number of special hostid types which apply to all platforms. These hostid types are valid to use in both SERVER lines and FEATURE lines, wherever a hostid is required. These are:

ANY	Locks the software to any machine (i.e., does not lock anything).
DEMO	Similar to ANY, but only for use with uncounted FEATURE lines.
COMPOSITE= <i>composit_hostid</i>	Locks the software to a composite hostid. A composite hostid is a hashed 12-character hexadecimal value formed by combining the values of one or more simple hostids types, as defined by the software vendor.
DISPLAY= <i>display</i>	Locks the software to display <i>display</i> . On UNIX, <i>display</i> is /dev/ttyxx (which is always /dev/tty when an application is run in the background) or the X-Display name. On Windows, it is the system name or, in the case of a terminal server environment, the terminal server client name. (v8+ FLEXenabled applications only)
HOSTNAME= <i>host</i>	Locks the software to computer host name <i>host</i> .

<code>ID=<i>n</i></code>	Functionally equivalent to the “ANY” hostid—it runs on any machine. The difference is that the license is unique and is used to identify the end user. This hostid is used to lock the license server system (on the SERVER line) or the FLEXenabled application (on the FEATURE/INCREMENT line). The number can have dashes included for readability—the dashes are ignored. Examples: ID=12345678 is the same as ID=1234-5678 is the same as ID=1-2-3-4-5-6-7-8
<code>INTERNET=###.###.###.###</code>	Locks the software to an Internet IP address, or group of IP addresses. Wildcards are allowed. For example, 198.156.*.* means any host with a matching internet IP address. The main use is to limit usage access by subnet, implying geographic area. For this purpose, it is used on the FEATURE/INCREMENT line as a hostid lock.
<code>USER=<i>user</i></code>	Locks the software to user name <i>user</i> .

Examples

```
FEATURE f1 demo 1.0 1-jan-2005 uncounted \  
        HOSTID=FLEXID=6-a6300015f SIGN=AB28E0011DA1
```

or

```
FEATURE f1 demo 1.0 1-jan-2005 uncounted \  
        HOSTID=INTERNET=10.10.10.* SIGN=EB78201163B0
```


License File Format

B

License files usually begin with a SERVER line (or three lines for three-server redundant servers) followed by one or more VENDOR lines, followed by one or more FEATURE or INCREMENT lines. In some cases the license file requires no SERVER line and no VENDOR line.

You can modify these elements in the license file:

- Host names on the SERVER line(s)
- TCP/IP port numbers on the SERVER line(s)
- Three-server redundant configuration for a set of SERVER lines
- Paths on the VENDOR line(s)
- Options file paths on the VENDOR line(s)
- Optional TCP/IP port numbers on the VENDOR line(s) (for firewall support only)
- USE_SERVER line
- Values in *keyword=value* pairs on FEATURE lines, if *keyword* is specified in lowercase

Use the “\” line-continuation character to break up long lines.

8-bit Latin-based characters are fully supported in license files, options files, log files, and FLEXenabled application environments.

See “[Counted vs. Uncounted Licenses](#)” for more information on SERVER and VENDOR line requirements.



FLEXNET LICENSING VERSION NOTES

- USE_SERVER introduced in the v5.0 client library.
 - Line-continuation character is required with the pre-v7.0 client library.
 - 8-bit Latin-based character support introduced in the v8.0 client library.
-

License File Syntax

Sample License File

This is an example of a license file for a single vendor with two features.

```
SERVER my_server 17007ea8 1700
VENDOR sampled
FEATURE f1 sampled 1.000 01-jan-2005 10 SIGN=9BFAC0316462
FEATURE f2 sampled 1.000 01-jan-2005 10 SIGN=1B9A308CC0F7
```

The license file above allows the license server system “my_server” with the hostid “17007ea8” to serve ten floating licenses for each feature, “f1” and “f2,” to any user on the network.

SERVER Lines

The SERVER line specifies the host name and hostid of the license server system and the TCP/IP port number of the license server manager (lmgrd). Normally a license file has one SERVER line. Three SERVER lines mean that you are using a three-server redundant license server system. The absence of a SERVER line means that every FEATURE and INCREMENT line in the license file is uncounted.

The hostids from the SERVER lines are computed into the license key or signature on every FEATURE and INCREMENT line. For this reason, make sure you keep SERVER lines together with any FEATURE/INCREMENT lines as they were sent from the vendor.

The format of the SERVER line is:

```
SERVER host hostid [port] [PRIMARY_IS_MASTER] [SERVER_TIMEOUT=seconds]
```

where:

Field	Description
<i>host</i>	The system host name or IP address. String returned by the UNIX hostname or uname -n command. On NT/2000/XP, ipconfig /all; on Windows 95/98/ME, winipcfg /all return the host name.
<i>hostid</i>	Usually the string returned by the lmhostid command. This is changed only by your software supplier.

Field	Description
<i>port</i>	<p>TCP/IP port number to use. A valid number is any unused port number between 0 and 64000. On UNIX, choose a port >1024, since those <1024 are privileged port numbers. If no TCP/IP port number is specified, one of the default ports in the range of 27000 and 27009 is used.</p> <p>SERVER lines specifying servers in a three-server redundant license server system configuration require a port number to be specified; Macrovision recommends using port numbers outside the range of 27000 through 27009.</p>
PRIMARY_IS_MASTER	<p>For a three-server redundant configuration, indicates how master control is transitioned between the primary and secondary servers.</p> <ul style="list-style-type: none"> • If set and the primary server goes down, the secondary server becomes the master and transitions control back to the primary server as soon as it comes back up. • If not set and the primary server goes down, the secondary server becomes the master and remains the master even when the primary server comes back up. <p>If both primary and secondary go down, licenses are no longer served. In no instance does the tertiary server become the master.</p> <p>This parameter is optional and is placed on the first SERVER line in the license file. You must be running a v10.8 vendor daemon to use this parameter.</p>
SERVER_TIMEOUT= <i>seconds</i>	<p>For a three-server redundant configuration, indicates how long a server waits to receive a heartbeat from another server in the configuration before shutting itself down. <i>seconds</i> is used in the following equation to calculate the timeout:</p> $\text{timeout} = (3 \times \text{seconds}) + (\text{seconds} - 1)$ <p>If not specified, the default value for <i>seconds</i> is 20, equating to a timeout of 79 seconds. Valid values for <i>seconds</i> are 0 through 120.</p> <p>This parameter is optional and is placed on the first SERVER line in the license file. You must be running a v10.8 vendor daemon to use this parameter.</p>

Example:

```
SERVER my_server 17007ea8 21987
```

Three-Server Redundant Configurations

The machines that compose a three-server redundant configuration are required to have excellent communications. This form of redundancy requires that the servers exchange heartbeats periodically, and poor communications can cause poor performance. Avoid configuring redundant servers with slow communications or dial-up links.

Maintain an identical copy of the license file (as well as the `lmgrd` and the vendor daemons binaries) locally on each server machine rather than on a file server. If you do not do this, you lose all the advantages of having redundant servers, since the file server holding these files becomes a single point of failure.

Three-server redundant configurations are specified by including three `SERVER` lines in the license file. The set of three `SERVER` lines must appear in the same order with each line for a given server being identical across all three files. At any given moment in time, `lmgrd` has a notion of the master server, whose duties include:

- Serving licenses
- Recording information into the debug log
- Recording usage information into the report log

By default the primary server is the master; the method of transitioning the master server duties, in case of primary server failure, is controlled by the `PRIMARY_IS_MASTER` parameter.

Why are three license server systems required in a redundant configuration?

In order to provide for license server system failover, multiple redundant server systems, each running on their own machine, must be able to serve the same set of counted licenses. However, to ensure consistency and security of the software publisher's licenses, these redundant license server systems must ensure that only one of them can serve licenses at any one time.

A given set of counted licenses is bound to the hostids of a specific number of redundant license server machines via `SERVER` lines in the license file. In this way, each license server system knows how to communicate with the other redundant license server systems that are bound to the same set of counted licenses. Upon startup, each server system determines whether or not it can communicate with the other redundant license server systems. A group of redundant license server systems is formed when all members of the group can each communicate with all others in that same group.

Once a group is formed, the group guarantees that only one of its license servers can serve licenses at any one time. However, *FLEXnet Licensing* must ensure that only one such group will be formed from the total number of redundant license servers. To ensure that there is only one group that is formed, only the group that contains *greater than one half* of the redundant license servers allows itself to serve licenses. This group of license servers is called the

majority. License servers that are not part of the majority, including single license servers that cannot communicate with any other of its redundant license servers, refuse to serve licenses. License servers that are not part of the majority continue to run, but only so that they can continue their attempt to join the majority or form a majority if no majority yet exists.

If a license server system ever detects that it is no longer in communication with the majority, it refuses to serve licenses until it can. If the members of the majority determine that they have lost communication with enough other license servers that they have lost the majority, they refuse to serve licenses.

If FLEXnet Licensing allowed a set of counted licenses to be bound to only two redundant license server systems, then, by the rules above, only a group that contains greater than one half of the total number of redundant license servers would allow itself to serve licenses. For a group of only two, this would mean both license servers would have to remain in constant communication and neither could fail. That is, the only number greater than one half of two is two, which is not a fail-over solution.

Because of the requirement for a majority, the obvious number of redundant license server systems to use is an odd number. Using an even number of license servers would require an extra license server to be part of the majority without adding value. For simplicity, FLEXnet Licensing only supports three redundant license servers because three is the smallest odd number greater than one.

See Also

- [“FEATURE/INCREMENT Lines”](#) for more information about uncounted features.
- [Chapter 4, “Selecting License Server Machines,”](#) for more information about redundant servers.



FLEXNET LICENSING VERSION NOTES

- IP address specification for *host* introduced in v5.0 *lmgrd*, vendor daemon, and client library.
 - *port* specification is required with a pre-v6.0 *lmgrd*, vendor daemon, and client library.
 - PRIMARY_IS_MASTER and SERVER_TIMEOUT introduced in v10.8 *lmgrd* and vendor daemon.
-

VENDOR Lines

The VENDOR line specifies the daemon name and path. `lmgrd` uses this line to start the vendor daemon, and the vendor daemon reads it to find its options file. The format of the VENDOR line is shown below.

```
VENDOR vendor [vendor_daemon_path]\
           [[OPTIONS=]options_file_path] [[PORT=]port]
```

where:

Field	Description
<i>vendor</i>	Name of the vendor daemon used to serve some feature(s) in the file. This name cannot be changed by the administrator.
<i>vendor_daemon_path</i>	Optional path to the executable for this daemon. Generally the license administrator is free to install the daemon in any directory. (It is recommended, however, that it be installed in a local directory on the license server machine.) If omitted, <code>lmgrd</code> looks for the vendor daemon binary in <ul style="list-style-type: none"> the current directory the path specified in <code>lmgrd</code>'s <code>\$PATH</code> environment variable in the directory where <code>lmgrd</code> is located If <i>vendor_daemon_path</i> is blank, then any options or TCP/IP port number specifications require the <code>OPTIONS=</code> and <code>PORT=</code> strings.
<i>options_file_path</i>	Full path to the end-user options file for this daemon. FLEXnet Licensing does not require an options file. If omitted, the vendor daemon, by default, looks for a file called <i>vendor.opt</i> (where <i>vendor</i> is the vendor daemon name) located in the same directory as the license file.
<i>port</i>	Vendor daemon TCP/IP port number. The default, if <i>port</i> is not specified, is chosen by the operating system at run-time. Sites with Internet firewalls need to specify the TCP/IP port number the daemon uses. If a TCP/IP port number is specified on the VENDOR line, there may be a delay restarting the vendor daemon.

See Also

- [Chapter 5, “The Options File,”](#) for further information regarding options file contents.



FLEXNET LICENSING VERSION NOTES

- *vendor_daemon_path* required in pre-v6.0 vendor daemon.
 - *options_file_path* required in pre-v6.0 vendor daemon.
 - VENDOR lines are known as DAEMON lines in the pre-v6.0 lmgrd and vendor daemon.
v6.0+:

```
VENDOR sampled
```


pre-v6.0:

```
DAEMON sampled /etc/sampled \  
/etc/sampled/licenses/sampled.opt
```
 - The `options=` keyword introduced in the v5.0 vendor daemon.
-

USE_SERVER Line

USE_SERVER takes no arguments and has no impact on the server. When the application sees USE_SERVER, it ignores everything in the license file except preceding SERVER lines and transfers checkout validation to the vendor daemon.

USE_SERVER is recommended since it improves performance when a license server system is used. For uncounted features, USE_SERVER is used to force logging of usage by the daemons.

FEATURE/INCREMENT Lines

A FEATURE line describes the license required to use a product. An INCREMENT line can be used in place of a FEATURE line, as well as to incrementally add licenses to a prior FEATURE or INCREMENT line in the license file.

Only the first FEATURE line for a given feature is processed by the vendor daemon. If you want to have additional copies of the same feature (for example, to have multiple node-locked, counted features), then you must use multiple INCREMENT lines. INCREMENT lines form license groups, or *pools*, based on the following fields:

- feature name
- version
- DUP_GROUP
- FLOAT_OK

- HOST_BASED
- HOSTID
- PLATFORM
- USER_BASED
- VENDOR_STRING (if configured by the vendor as a pooling component)

If two lines differ by any of these fields, a new group of licenses, called a *license pool*, is created in the vendor daemon, and this group is counted independently from other license pools with the same feature name. A FEATURE line does not give an additional number of licenses, whereas an INCREMENT line always gives an additional number of licenses.

The basic FEATURE/INCREMENT line format is:

```
{FEATURE|INCREMENT} feature vendor feat_version exp_date \
    num_lic SIGN=sign [optional_attributes]
```

The six fields after the FEATURE/INCREMENT line keyword are required and have a fixed order. They are defined by the vendor and cannot be changed. [Table B-1](#) presents these fields in the order they must appear.

Table B-1: FEATURE/INCREMENT Line Required Fields

Field	Description
<i>feature</i>	Name given to the feature by the vendor.
<i>vendor</i>	Name of the vendor daemon; also found in the VENDOR line. The specified daemon serves this feature.
<i>feat_version</i>	Version of this feature that is supported by this license.
<i>exp_date</i>	Expiration date of license in the format dd-mm-yyyy, e.g., 07-may-2005. Note: If <i>exp_date</i> is the string “permanent” or the year is 0 (or 00, 000, 0000) then the license never expires.
<i>num_lic</i>	Number of concurrent licenses for this feature. If the <i>num_lic</i> is set to the string “uncounted” or 0, the licenses for this feature are uncounted and no <i>lmgrd</i> is required but a <i>hostid</i> on the FEATURE line is required. See “Counted vs. Uncounted Licenses.”
SIGN= <i>sign</i> or AUTH=...	SIGN= signature to authenticate this FEATURE line. If your publisher has deployed his vendor daemon using the common vendor daemon technology, license certificate signatures are embedded within the AUTH= keyword. Contact your publisher for further details.

Table B-2 lists attributes that may appear in a FEATURE or INCREMENT line. They are supplied at the discretion of the vendor to provide particular licensing behavior. If present in the FEATURE or INCREMENT line, they must remain there and cannot be altered by the end user. These attributes have a *keyword=value* syntax where *keyword* is in uppercase.

In places where *value* is a string surrounded with double quotes (“...”), the string can contain any characters except a quote.

Table B-2: Vendor Supplied Attributes

Attribute	Description
BORROW[=n]	Enables license borrowing for a particular FEATURE/INCREMENT line. <i>n</i> is the number of hours that the license is borrowed. The default borrow period is 168 hours, or one week.
DUP_GROUP=...	<p>The syntax is: DUP_GROUP=NONE SITE [UHDV] U = DUP_USER H = DUP_HOST D = DUP_DISPLAY V = DUP_VENDOR_DEF</p> <p>Any combination of UHDV is allowed, and the DUP_MASK is the OR of the combination. For example, DUP_GROUP=UHD means the duplicate grouping is (DUP_USER DUP_HOST DUP_DISPLAY), so for a user on the same host and display, additional uses of a feature do not consume additional licenses.</p>
FLOAT_OK [=server_hostid]	<p>Enables mobile licensing via FLEXid with FLOAT_OK for a particular FEATURE/INCREMENT line. This FEATURE/INCREMENT line must also be node-locked to a FLEXid.</p> <p>When FLOAT_OK=server_hostid is specified on a FEATURE line:</p> <ul style="list-style-type: none"> • The <i>server_hostid</i> must refer to the same host that appears on the SERVER line of the license file. • The license server system runs only on the machine with the hostid that <i>lmhostid</i> returns equal to the <i>server_hostid</i> specified with FLOAT_OK.

Table B-2: Vendor Supplied Attributes (cont.)

Attribute	Description
HOSTID= "hostid1 [hostid2 ... hostidn]"	Id of the host to which the feature line is bound. <i>hostid</i> is determined with the <code>lmhostid</code> utility. This field is required for uncounted licenses; but can be used for counted licenses as well. See Appendix A, "Hostids for FLEXnet Licensing-Supported Platforms," for more information.
HOST_BASED[=n]	Host names must be specified in INCLUDE statements in the end-user options file, and the number of hosts is limited to <i>num_lic</i> , or the number specified in <i>=n</i> .
ISSUED=dd-mmm-yyyy	Date issued.
ISSUER="..."	Issuer of the license.
NOTICE="..."	A field for intellectual property notices.
OVERDRAFT=n	The overdraft policy allows your vendor to specify a number of additional licenses which users are allowed to use, in addition to the licenses they have purchased. This allows your users to not be denied service when in a "temporary overdraft" state. Usage above the license limit is reported by the FLEXnet Manager reporting tool.
PLATFORMS="..."	Usage is limited to the listed platforms.
SN=serial_num	Serial number, used to identify FEATURE or INCREMENT lines.
START=dd-mmm-yyyy	Start date.
SUITE_DUP_GROUP=...	Similar to DUP_GROUP, but affects only the enabling FEATURE line for a package suite. It limits the total number of users of the package to the number of licenses, and allows the package to be shared among the users that have the SUITE checked out.
SUPERSEDE= "f1 f2 ..."	If this appears, all licenses issued before the date specified in ISSUED= are <i>superseded</i> by this line and become ineffective.

Table B-2: Vendor Supplied Attributes (cont.)

Attribute	Description
TS_OK	FLEXnet Licensing detects when a node-locked uncounted license is running under Windows Terminal Server. To run the application via a Terminal Server client window, TS_OK must be added to the FEATURE line. Without TS_OK, a user running on a Terminal Server client is denied a license.
USER_BASED[=n]	Users must be specified in INCLUDE statements in the end-user options file, and the number of users are limited to <i>num_lic</i> , or the number specified in =n.
VENDOR_STRING= "..."	Vendor-defined string, enclosed in double quotes.

The following attributes listed in [Table B-3](#) are optional and are under control of the end user. These attributes have a *keyword=value* syntax where *keyword* is in lowercase.

Table B-3: End-User Attributes

Attribute	Description
asset_info="..."	Additional information provided by the license administrator for asset management.
dist_info="..."	Additional information provided by the software distributor.
sort=nnn	Specifies sort order of license file lines. See “Order of Precedence.”
user_info="..."	Additional information provided by the license administrator.
vendor_info="..."	Additional information provided by the software vendor.

Examples:

```
FEATURE sample_app sampled 2.300 31-dec-2005 20 \
SIGN=123456789012
INCREMENT f1 sampled 1.000 permanent 5 \
HOSTID=INTERNET=195.186.*.* NOTICE="Licensed to \
Sample corp" SIGN=901234567890
```

Order of Precedence

FEATURE/INCREMENT license file lines are automatically sorted when they are processed by FLEXnet Licensing; the default sorting rules are as follows:

1. License file. Automatic sorting does not occur across files in a license-file list.
2. Feature name.
3. FEATURE before INCREMENT.
4. Uncounted before counted.
5. Version, higher versions before lower versions.
6. Issued date, in reverse order, newest first. The date is taken from ISSUED= or START=.
7. Original order is otherwise maintained.

To turn off automatic ordering add `sort=nnn` to the FEATURE/INCREMENT line, where `nnn` is the same on all lines; `nnn` specifies the relative sort order. The default sort order value is 100. Lines with a sort order value of less than 100 are sorted before all lines without this attribute, and lines with a sort order value greater than 100 appear after all unmarked lines. All lines with the same number are sorted as they appear in the file.



FLEXNET LICENSING VERSION NOTES

- Pre-v7.1 FEATURE/INCREMENT line format uses *license_key*:

```
{FEATURE|INCREMENT} feature vendor feat_version exp_date  
num_lic license_key [optional_attributes]
```

The pre-v7.1 format is understood by the current client library and vendor daemon.
 - The SIGN= keyword introduced in the v7.1 client library and vendor daemon.
 - For v7.1 through v8.0 client libraries and vendor daemons, the FEATURE/INCREMENT line must have a SIGN= signature and, for backward compatibility with pre-v8.1, can contain a *license_key*:

```
{FEATURE|INCREMENT} feature vendor feat_version exp_date \  
num_lic [license_key] SIGN=sign \  
[optional_attributes]
```
 - *license_key* obsoleted in v8.1 client library and vendor daemon
 - The keyword “permanent” for *exp_date* introduced in v6 client library.
 - The keyword “uncounted” for *num_lic* introduced in v6 client library.
 - BORROW keyword introduced in v8.0 client library and vendor daemon.
 - FLOAT_OK keyword introduced in v8.0 client library and vendor daemon.
 - TS_OK keyword introduced in v8.0 client library and vendor daemon.
 - AUTH keyword introduced in v10.8 client library and vendor daemon.
-

PACKAGE Lines

The purpose of the PACKAGE line is to support two different licensing needs:

- To license a product SUITE, or
- To provide a more efficient way of distributing a license file that has a large number of features, which largely share the same FEATURE line arguments.

A PACKAGE line, by itself, does not license anything—it requires a matching FEATURE/INCREMENT line to license the whole package. A PACKAGE line is shipped by your software vendor with a product, independent of any licenses. Later, when you purchase a license for that package, one or more corresponding FEATURE/INCREMENT lines enable the PACKAGE line.

Example:

```
PACKAGE package vendor [pkg_version] COMPONENTS=pkg_list \
    [OPTIONS=SUITE] [SUPERSEDE=["p1 p2 ..."]] ISSUED=date]
SIGN=pkg_sign
```

[Table B-4](#) lists the PACKAGE line fields. They must appear in the order listed.

Table B-4: PACKAGE Line Fields

Field	Description
<i>package</i>	Name of the package. The corresponding FEATURE/INCREMENT line must have the same name.
<i>vendor</i>	Name of the vendor daemon that supports this package.
<i>pkg_version</i>	Optional field specifying the package version. If specified, the enabling FEATURE/INCREMENT line must have the same version.
COMPONENTS= <i>pkg_list</i>	List of package components. The format is: <i>feature[:version[:num_lic]]</i> Packages must consist of at least one component. Version and count are optional, and if left out, their values come from the corresponding FEATURE/INCREMENT line. <i>num_lic</i> is only legal if OPTIONS=SUITE is not set—in this case the resulting number of licenses is <i>num_lic</i> on the COMPONENTS line multiplied by the number of licenses in the FEATURE/INCREMENT line. Examples: COMPONENTS="comp1 comp2 comp3 comp4" COMPONENTS="comp1:1.5 comp2 comp3:2.0:4"

Table B-4: PACKAGE Line Fields (cont.)

Field	Description
OPTIONS=SUIE	Optional field. Used to denote a package suite. If set, the corresponding feature of the same name as the package is checked out in addition to the component feature being checked out. If not set, then the corresponding feature of the same name as the package is removed once the package is enabled; it is not checked out when a component feature is checked out.
OPTIONS= SUIE_RESERVED	Optional field. If set, reserves a set of package components. Once one package component is checked out, all the other components are reserved for that same user.
SUPERSEDE [="p1 p2 ..."]	Optional field. Used in conjunction with ISSUED date. Replaces all PACKAGE lines for the same package name with ISSUED dates previous to <i>dd-mmm-yyyy</i> .
ISSUED= <i>dd-mmm-yyyy</i>	Optional field. Used in conjunction with SUPERSEDE. Replaces all PACKAGE lines for the same package name with ISSUED dates previous to <i>dd-mmm-yyyy</i> .
SIGN= <i>sign</i> or AUTH=...	SIGN= signature to authenticate this FEATURE line. If your publisher has deployed his vendor daemon using the common vendor daemon technology, license certificate signatures are embedded within the AUTH= keyword. Contact your publisher for further details.

Examples:

```
PACKAGE suite sampled 1.0 SIGN=3B24B2F508CB \
      COMPONENTS="comp1 comp2" OPTIONS=SUIE
FEATURE suite sampled 1.0 1-jan-0 5 SIGN=4193E6ABCCCB
```

This is a typical OPTIONS=SUIE example. There are two features, “comp1” and “comp2,” which are each version 1.0, each with five non-expiring licenses available. When “comp1” or “comp2” is checked out, “suite” is also checked out.

```
PACKAGE suite sampled 1.0 SIGN=2CBF44FCB9C1 \
      COMPONENTS="apple:1.5:2 orange:3.0:4"
FEATURE suite sampled 1.0 1-jan-2005 3 SIGN=321E78A17EC1 SN=123
```

In this example, the component version overrides the feature version, and the number of licenses available for any component is the product of the three licenses for “suite” and the number of licenses for that component. The result is equivalent to:

```
FEATURE apple sampled 1.5 1-jan-2005 6 SIGN=0D3AD5F26BEC SN=123
FEATURE orange sampled 3.0 1-jan-2005 12 SIGN=EB16C5AE61F0 SN=123
```



FLEXNET LICENSING VERSION NOTES

- Ability to store PACKAGE lines in separate files introduced in v6 client library.
 - *pkg_version* field required in pre-v7.1 client library.
 - AUTH keyword introduced in v10.8 client library and vendor daemon.
-

UPGRADE Lines

```
UPGRADE feature vendor from_feat_version to_feat_version \  
exp_date num_lic [options ... ] SIGN=sign
```

All the data is the same as for a FEATURE or INCREMENT line, with the addition of the *from_feat_version* field. An UPGRADE line removes up to the number of licenses specified from any old version (\geq *from_feat_version*) and creates a new version with that same number of licenses.

For example, the two lines:

```
INCREMENT f1 sampled 1.000 1-jan-2005 5 SIGN=9BFAC0316462
UPGRADE f1 sampled 1.000 2.000 1-jan-2005 2 SIGN=1B9A308CC0F7
```

provide three v1.0 licenses of “f1” and two v2.0 licenses of “f1.”

An UPGRADE line operates on the closest preceding FEATURE or INCREMENT line with a version number that is \geq *from_feat_version*, and $<$ *to_feat_version*.

Note UPGRADE lines do not work for node-locked, uncounted licenses.

Decimal Format

Licenses can be represented in decimal format. Decimal has the advantage that it’s simpler to type in, and often the licenses are much shorter.

A simple demo license in readable format:

```
FEATURE f1 sampled 1.00 1-jan-2005 0 key1 HOSTID=DEMO
```

and its decimal equivalent:

```
sampled-f1-00737-55296-1825
```

If needed, decimal lines can be mixed with readable format lines in a license file. Use the `lminstall` command to convert decimal licenses to readable format.

See Also

- [“lminstall”](#) for additional information on the `lminstall` command.



FLEXNET LICENSING VERSION NOTES

- The decimal format was introduced in the v6 client library and vendor daemon.
-

License File Order

The order of the lines in a license file is not critical. They are sorted when they are processed so that in most cases the optimal result is achieved. However, pre-v7.0 versions of FLEXenabled applications and license server systems implicitly impose an ordering to license file lines. Note the following suggestions for ordering lines in the license file:

- Place FEATURE lines before INCREMENT lines for the same feature.
The rule regarding FEATURE lines is that only the first counted FEATURE line is observed by the license server system, and that if there is a FEATURE line and INCREMENT lines, the FEATURE line must appear first.
- Where multiple counted FEATURE lines exist for the same feature, make sure the desired FEATURE line appears first.
All but the first is ignored.
- Place node-locked, uncounted lines before floating lines for the same FEATURE.
Otherwise, it is possible the floating license is consumed instead of the node-locked license, resulting in denial for other users.
- The placement of a USE_SERVER line affects behavior.
A USE_SERVER line is recommended. Normally, the USE_SERVER line is placed immediately after the SERVER line. However, place any uncounted licenses not served by SERVER before the USE_SERVER line. Make sure each user that needs the uncounted license has direct access to a current copy of the file. The advantage to placing USE_SERVER right after the SERVER line is users don't need up-to-date copies of the license file.

See Also

- [“Order of Precedence”](#)

Troubleshooting Guide

C

This appendix documents areas of FLEXnet Licensing that have given customers difficulty in the past.

General Troubleshooting Hints

The following are tips for debugging:

- When you start the license server system be sure that you direct the output into a local log file where you can examine it. The log file often contains useful information. Examine it when you have a problem, and be prepared to answer questions about it when you talk to a support person.
- If the license server system appears to have started correctly (which you can determine from the log file), try running `lmstat -a` and `lmdiag` to see if that program has the same problem as your application.
- If your application is v4.1 or later (v5 or later on Windows), you can use the `FLEXLM_DIAGNOSTICS` environment variable. Set `FLEXLM_DIAGNOSTICS` to 1, 2, or 3. A setting of 3 gives more information than 2, 2 gives more information than 1 (in particular, the feature name that was denied). See “[FLEXLM_DIAGNOSTICS](#)” for more information.
- When you talk to a support person, be prepared with answers to the following questions:
 - What kind of machine is your license server system running on?
 - What version of the operating system?
 - What machine and operating system is the application running on?
 - What version of FLEXnet Licensing does the FLEXenabled application use?

Use the `lmver` script, or, on UNIX, execute the following command on your `lmgrd`, vendor daemon, and application:

```
strings binary_name | grep Copy
```

Alternatively, `lmgrd -v` gives the `lmgrd` version, and this works with the vendor daemon also.

- What error or warning messages appear in the log file?
- Did the server start correctly?

Look for a message such as:

```
server xyz started for: feature1 feature2.
```

- What is the output from running `lmstat -a`?
- Are you running other FLEXenabled products?
- Are you using a combined license file or separate license files?
- Are you using a three-server redundant license server system (multiple SERVER lines in your license file)?

FLEXLM_DIAGNOSTICS

Note The ability for FLEXnet Licensing to produce diagnostic output is controlled by your software vendor.

FLEXLM_DIAGNOSTICS is an environment variable that causes the application to produce diagnostic information when a checkout is denied. The format of the diagnostic information may change over time.

On UNIX, the diagnostic output goes to `stderr`.

On Windows, the output is a file in the current directory called `flexpid.log`, where `pid` is the application's process ID.

Level 1 Content

If FLEXLM_DIAGNOSTICS is set to 1, then the standard FLEXnet Licensing error message is presented, plus a complete list of license files that the application tried to use. For example:

```
setenv FLEXLM_DIAGNOSTICS 1
FLEXlm checkout error: Cannot find license file (-1,73:2) No such file or directory
license file(s): /usr/myproduct/licenses/testing.lic license.lic
```

Level 2 Content

If FLEXLM_DIAGNOSTICS is set to 2, then, in addition to level 1 output, the checkout arguments are presented. For example:

```
setenv FLEXLM_DIAGNOSTICS 2
FLEXlm checkout error: No such feature exists (-5,116:2) No such file or directory
license file(s): /usr/myproduct/licenses/testing.lic license.lic
lm_checkout("f1", 1.0, 1, 0x0, ..., 0x4000)
```

Note that the error message actually contains two separate problems, which both occurred during the checkout:

- There's no such feature in the license it did find
- It was unable to find the other license file, which is what produces the message "No such file or directory"

Following is a description of the arguments to `lm_checkout()`

```
lm_checkout(feature, version, num_lic, queue_flag, ..., dupgroup_mask)
```

where:

<i>feature</i>	The requested feature.
<i>version</i>	The requested version. The license file must contain a version \geq the requested version.
<i>num_lic</i>	Number of licenses requested. Usually 1.
<i>queue_flag</i>	If 0, no queueing If 1, queue for license (“blocking” queue) If 2, queue for licenses, but return to application (“non-blocking” queue)
<i>dupgroup_mask</i>	Indicates duplicate grouping, also called license sharing. User, host, and display are as shown by <code>lmstat -a</code> .

Level 3 Content (v6.0+ only)

If FLEXLM_DIAGNOSTICS is set to 3, then, in addition to level 1 and 2 output, if a checkout is successful, information is printed explaining how the license was granted:

```
setenv FLEXLM_DIAGNOSTICS 3
app
Checkout succeeded: f0/14263EAEA8E0
License file: ./servtest.lic
No server used
app2
Checkout succeeded: f1/BC64A7B120AE
License file: @localhost
License Server System: @localhost
app3
Checkout succeeded: f1/BC64A7B120AE
License file: servtest.lic
License Server System: @speedy
```

Note that the feature name and license key are printed, along with the license file location (or host name if `@host` were used) and host name of the server, where applicable.

FLEXnet Licensing Environment Variables D

Environment variables are not required in order to use FLEXenabled applications. Environment variables are normally used for debugging or for changing license default location.

How to Set Environment Variables

FLEXnet Licensing environment variables are set in two different ways:

- In the process' environment
- In the registry (Windows v6.0+) or in `$HOME/.flexlmrc` (UNIX v7.0+), which functions like the registry for FLEXnet Licensing on UNIX.

Registry

On Windows, the FLEXnet Licensing registry location is:

```
HKEY_LOCAL_MACHINE\Software\FLEXlm License Manager
```

On UNIX, the equivalent information is stored in `$HOME/.flexlmrc`. In this file, the syntax is *variable=value*.

Precedence

If the variable is `LM_LICENSE_FILE` or `VENDOR_LICENSE_FILE`, then both the environment and the registry are used, with the environment used first, and the registry appended to the path.

If it's a different variable, then if the environment set, only that is used, otherwise the registry is used. That is, the registry is only used if the environment is not set.

Environment Variables

Variable	Definition
<code>FLEXLM_BATCH</code>	Windows only: prevents interactive pop-ups from appearing. Set to 1 if a batch application. (Version 7.0+ clients)

Appendix D - FLEXnet Licensing Environment Variables

Environment Variables

FLEXLM_DIAGNOSTICS	Used for debugging where applications don't print FLEXnet Licensing error message text. Set to 1, 2, or 3, depending on the amount of diagnostic information desired. See “FLEXLM_DIAGNOSTICS.” (Version 5.0+ clients)
FLEXLM_TIMEOUT	Windows only: Sets the timeout value a FLEXenabled application uses when attempting to connect to a license server system port in the range 27000-27009. Values are in microseconds, within the range 0 through 2147483647. The default setting is 100000 microseconds.
LM_BORROW	Used for initiating license borrowing and setting the borrow period. See “Initiating License Borrowing” for more details. On UNIX platforms, \$HOME/.flexlmborrow is used for the registry instead of \$HOME/.flexlmrc.
LM_PROJECT	LM_PROJECT's value is logged in the report log file and later reported on by FLEXnet Manager. Limited to 30 characters. (v5.0+ client required.) This can also be used to RESERVE, INCLUDE, etc. licenses with PROJECT. For example: RESERVE 1 f1 PROJECT airplane v5.0+ clients and v7.0+ vendor daemon are required for this feature.
LM_SERVER_HIGHEST_FD	Used to set the highest file descriptor value, above which the license server will not access.
LM_UTIL_CASE_SENSITIVE	Used by the FLEXlm utilities. If set to 1, the utilities process license file lines as case sensitive. By default, this variable is set to 0; license files are treated as case insensitive. This environment variable is applicable only when the license server, itself, has been configured by your vendor to treat license files in a case sensitive manner.
TCP_NODELAY	Improves FLEXnet license server system performance when processing license requests. Set to 1 to enable performance enhancements. Use with caution: when enabled it may cause an increase in network traffic.

LM_LICENSE_FILE or
VENDOR_LICENSE_FILE

Reset path to license file. Can be a license-file list, separated by “:” on UNIX and “;” on Windows. If *VENDOR_LICENSE_FILE* used, *VENDOR* is the vendor daemon name used by this application. For example, Macrovision products use *GSI_LICENSE_FILE*. Can be a file name, or *port@host*. See also [“Setting the Path with an Environment Variable.”](#)

(*VENDOR_LICENSE_FILE* requires v6.0+ clients.)

Appendix D - FLEXnet Licensing Environment Variables

Environment Variables

FLEXnet Licensing Error Codes

E

Error Message Format

FLEXnet Licensing error messages presented by applications have the following components:

- FLEXnet Licensing Error Number—a negative number starting at -1.
- FLEXnet Licensing Error Text—short sentence (< 80 characters) summarizing problem.
- FLEXnet Licensing Error Explanation (optional)—short paragraph (3-5 lines) explaining problem and possible solutions or workarounds.
- FLEXnet Licensing Minor Error Number—a positive number starting at 1. These numbers are unique error identifiers and are used by FLEXnet Licensing vendors for more advanced support assistance. Their meaning is not documented.
- System Error Number (optional)—a UNIX or Windows OS error code last set by the operating system.
- System Error Explanation (optional)—a short sentence (< 80 characters) explaining the system error.
- Other supporting information (optional)

Error messages were improved in v6. FLEXnet Licensing Error Explanation, and supporting information are only available in applications using v6.0+.

These error messages may occur in two formats available with FLEXnet Licensing or may appear in a format customized by the application.

Format 1 (short):

```
FLEXlm error text (-lm_errno, minor_num[:sys_errno]) [sys_error_text]
```

The system error information may be missing.

Example:

```
Can't connect to license server system (-15,12:61) Connection refused
```

Format 2 (long—version 6.0+):

```
FLEXlm error text
  FLEXlm error explanation
[Optional Supporting information]
FLEXlm error: -lm_errno, minor_num. [System Error: sys_errno] ["system_error_text"]
```

Example:

```
Cannot connect to license server system
The server (lmgrd) has not been started yet, or
the wrong port@host or license file is being used, or the
port or hostname in the license file has been changed.
Feature:      f1
Server name:  localhost
License path: @localhost:license.dat:/*.lic
FLEXlm error: -15,12. System Error: 61 "Connection refused"
```

Error Code Descriptions

The following table lists the most common errors produced by FLEXenabled products.

Table E-1: FLEXnet Licensing Error Codes

Error Code	Description
-1	Cannot find license file.
-2	Invalid license file syntax.
-3	No license server system for this feature.
-4	Licensed number of users already reached.
-5	No such feature exists.
-6	No TCP/IP port number in license file and FLEXnet Licensing service does not exist. (pre-v6 only)
-7	No socket connection to license server manager service.
-8	Invalid (inconsistent) license key or signature. The license key/signature and data for the feature do not match. This usually happens when a license file has been altered.
-9	Invalid host. The hostid of this system does not match the hostid specified in the license file.
-10	Feature has expired.
-11	Invalid date format in license file.
-12	Invalid returned data from license server system.
-13	No SERVER lines in license file.

Table E-1: FLEXnet Licensing Error Codes (cont.)

Error Code	Description
-14	Cannot find SERVER host name in network database. The lookup for the host name on the SERVER line in the license file failed. This often happens when NIS or DNS or the hosts file is incorrect. Workaround: Use IP address (e.g., 123.456.789.123) instead of host name.
-15	Cannot connect to license server system. The server (<code>lmgrd</code>) has not been started yet, or the wrong <code>port@host</code> or license file is being used, or the TCP/IP port or host name in the license file has been changed.
-16	Cannot read data from license server system.
-17	Cannot write data to license server system.
-18	License server system does not support this feature.
-19	Error in select system call.
-21	License file does not support this version.
-22	Feature checkin failure detected at license server system.
-23	License server system temporarily busy (new server connecting).
-24	Users are queued for this feature.
-25	License server system does not support this version of this feature.
-26	Request for more licenses than this feature supports.
-29	Cannot find ethernet device.
-30	Cannot read license file.
-31	Feature start date is in the future.
-32	No such attribute.
-33	Bad encryption handshake with vendor daemon.
-34	Clock difference too large between client and license server system.
-35	In the queue for this feature.
-36	Feature database corrupted in vendor daemon.

Appendix E - FLEXnet Licensing Error Codes

Error Code Descriptions

Table E-1: FLEXnet Licensing Error Codes (cont.)

Error Code	Description
-37	Duplicate selection mismatch for this feature. Obsolete with v8.0+ vendor daemon.
-38	User/host on EXCLUDE list for feature.
-39	User/host not on INCLUDE list for feature.
-40	Cannot allocate dynamic memory.
-41	Feature was never checked out.
-42	Invalid parameter.
-47	Clock setting check not available in vendor daemon.
-52	Vendor daemon did not respond within timeout interval.
-53	Checkout request rejected by vendor-defined checkout filter.
-54	No FEATURESET line in license file.
-55	Incorrect FEATURESET line in license file.
-56	Cannot compute FEATURESET data from license file.
-57 ¹	socket() call failed.
-59	Message checksum failure.
-60	License server system message checksum failure.
-61	Cannot read license file data from license server system.
-62	Network software (TCP/IP) not available.
-63	You are not a license administrator.
-64	lmremove request before the minimum lmremove interval.
-67	No licenses available to borrow.
-68	License BORROW support not enabled.
-69	FLOAT_OK can't run standalone on license server system.
-71	Invalid TZ environment variable.
-73	Local checkout filter rejected request.

Table E-1: FLEXnet Licensing Error Codes (cont.)

Error Code	Description
-74	Attempt to read beyond end of license file path.
-75 ¹	SYSS\$SETIMR call failed (VMS).
-76	Internal FLEXnet Licensing error—please report to Macrovision Corporation.
-77	Bad version number must be floating-point number with no letters.
-82	Invalid PACKAGE line in license file.
-83	FLEXnet Licensing version of client newer than server.
-84	USER_BASED license has no specified users - see license server system log.
-85	License server system doesn't support this request.
-87	Checkout exceeds MAX specified in options file.
-88	System clock has been set back.
-89	This platform not authorized by license.
-90	Future license file format or misspelling in license file. The file was issued for a later version of FLEXnet Licensing than this program understands.
-91	Encryption seeds are non-unique.
-92	Feature removed during lmrread, or wrong SERVER line hostid.
-93	This feature is available in a different license pool. This is a warning condition. The server has pooled one or more INCREMENT lines into a single pool, and the request was made on an INCREMENT line that has been pooled.
-94	Attempt to generate license with incompatible attributes.
-95	Network connect to THIS_HOST failed. Change this_host on the SERVER line in the license file to the actual host name.

Table E-1: FLEXnet Licensing Error Codes (cont.)

Error Code	Description
-96	License server machine is down or not responding. See the system administrator about starting the server, or make sure that you're referring to the right host (see <code>LM_LICENSE_FILE</code> environment variable).
-97	The desired vendor daemon is down. 1) Check the <code>lmgrd</code> log file, or 2) Try <code>lmreread</code> .
-98	This FEATURE line can't be converted to decimal format.
-99	The decimal format license is typed incorrectly.
-100	Cannot remove a linger license.
-101	All licenses are reserved for others. The system administrator has reserved all the licenses for others. Reservations are made in the options file. The server must be restarted for options file changes to take effect.
-102	A FLEXid borrow error occurred.
-103	Terminal Server remote client not allowed.
-104	Cannot borrow that long.
-106	License server system out of network connections. The vendor daemon can't handle any more users. See the debug log for further information.
-110	Cannot read dongle: check dongle or driver. Either the dongle is unattached, or the necessary software driver for this dongle type is not installed.
-112	Missing dongle driver. In order to read the FLEXid hostid, the correct driver must be installed. These drivers are available from your software vendor.
-114	SIGN= keyword required, but missing from license certificate. You need to obtain a SIGN= version of this license from your vendor.
-115	Error in Public Key package.
-116	TRL not supported for this platform.
-117	BORROW failed.

Table E-1: FLEXnet Licensing Error Codes (cont.)

Error Code	Description
-118	BORROW period expired.
-119	lmdown and lmreread must be run on license server machine.
-120	Cannot lmdown the server when licenses are borrowed.
-121	FLOAT_OK requires exactly one FLEXid hostid.
-122	Unable to delete local borrow info.
-123	Returning a borrowed license early is not supported. Contact the vendor for further details.
-124	Error returning borrowed license.
-125	A PACKAGE component must be specified.
-126	Composite hostid not initialized.
-127	A item needed for the composite hostid is missing or invalid.
-128	Error, borrowed license doesn't match any known server license.
-135	Error enabling the event log.
-136	Event logging is disabled.
-137	Error writing to the event log.
-139	Communications timeout.
-140	Bad message command.
-141	Error writing to socket. Peer has closed socket.
-142	Error, cannot generate version specific license tied to a single hostid, which is composite.
-143	Version-specific signatures are not supported for uncounted licenses.
-144	License template contains redundant signature specifiers.
-145	Bad V71_LK signature.
-146	Bad V71_SIGN signature.
-147	Bad V80_LK signature.

Appendix E - FLEXnet Licensing Error Codes

Error Code Descriptions

Table E-1: FLEXnet Licensing Error Codes (cont.)

Error Code	Description
-148	Bad V80_SIGN signature.
-149	Bad V81_LK signature.
-150	Bad V81_SIGN signature.
-151	Bad V81_SIGN2 signature.
-152	Bad V84_LK signature.
-153	Bad V84_SIGN signature.
-154	Bad V84_SIGN2 signature.
-155	License key required but missing from the license certificate. The application requires a license key in the license certificate. You need to obtain a license key version of this certificate from your vendor.
-156	Invalid signature specified with the AUTH= keyword.
-500	Invalid server port number.
-501	Invalid value in license where an integer was expected.
-502	Invalid value supplied for count.
-503	Invalid hostid supplied in license.
-504	Invalid hostid type supplied.
-505	Bad feature line syntax.
-506	Internal FLEXnet Licensing error.
-507	Bad date format in license file.
-508	Bad SERVER line.
-509	Bad license string.
-510	Server's feature doesn't authenticate on client side.
-511	No license checked out.
-512	License already checked out.
-513	Error list returned.

Table E-1: FLEXnet Licensing Error Codes (cont.)

Error Code	Description
-514	No certicom module available.
-515	Wrong or incomplete certicom module.
-516	SIGN or SIGN2 required in license certificate.
-517	Feature object has no license sources.
-518	An Identical license is already checked out on this license source.
-519	This license has an asynchronously-queued checkout pending.
-521	Library for native hostid couldn't be loaded.
-522	Already connected to another vendor daemon.
-523	No such user, host, or display.
-524	Shutdown of license server system failed.
-525	Shutdown failed — already connected to license server system.
-526	Invalid license source string.
-527	Log file switch error.

1. Indicates errors due to an operating system failure.

The Report Log File

The license server system produces both report log files and debug log files. The focus of this appendix is report log files. For information on debug log files see [Appendix G, “The Debug Log File.”](#)

The report log file contains feature usage information and is generated by the vendor daemon. However, a vendor daemon does not write report logs by default; this action must be enabled. The data in report logs is compressed, authenticated and organized into a repository.

Use Macrovision's software license administration solution, FLEXnet Manager, to gain exceptional visibility into license usage data and to create insightful reports on critical information like license availability and usage. FLEXnet Manager can be fully automated to run these reports on schedule and can be used to track license servers and usage across a heterogeneous network of server including Windows NT, Linux and UNIX. Contact Macrovision at www.macrovision.com for more details on how to obtain an evaluation copy of FLEXnet Manager for your enterprise.

Managing Report Log Output

As a vendor daemon runs for a period of time, the volume of report log output increases. If you have a lot of license activity, these log files grow very large. You need to consider where to put these files and how often to rotate and archive them. Therefore, it may be necessary to rotate or switch report log output into different files over time, each file containing license activity over a particular period of time.

Report log data is collected by the vendor daemon into an internal data buffer area before being flushed to the output file. The daemon's internal buffer is flushed once a minute or whenever it gets full, whichever occurs first. To ensure the freshest data possible in the report log file, flush the buffer on demand with the `lmreread` command. Use standard file compression tools to reduce the size of a report log file when it is no longer being written.

To avoid corruption and for performance, it is suggested that the vendor daemon write its report log to a file on a disk local to the system running the vendor daemon. Each vendor daemon must write to its own report log file.

Enabling Report Log Output for a Vendor Daemon

There are two ways to enable report logging for a particular vendor daemon either before or after starting the license server system.

- Add the REPORTLOG line to the options file for that vendor daemon. See [“REPORTLOG”](#) for more details.
- Invoke `lmswitchr` on the vendor daemon. See [“lmswitchr”](#) for more details.

Redirecting Report Log Output for a Vendor Daemon

The report log output for a particular vendor daemon can be moved into separate files, each file representing activity over a different period of time. There are three ways in which to do this whether the vendor daemon is running or not:

- Change the REPORTLOG line in the vendor daemon’s options file and reread its options file by invoking `lmreread` (v8.0+ vendor daemon) or restart.
- Invoke `lmswitchr` on the vendor daemon. See [“lmswitchr”](#) for more details.
- Invoke `lmnewlog` on the vendor daemon. Requires a v7.1+ vendor daemon. See [“lmnewlog”](#) for more details.

The Debug Log File

The license server system produces both debug log files and report log files. The focus of this appendix is debug log files. For information on report log files see [Appendix F, “The Report Log File.”](#)

A debug log file contains status and error messages useful for debugging the license server system. A license server system always generates debug log output. Some of the debug log output describes events specific to `lmgrd` and some of the debug log output describes events specific to each vendor daemon.

Managing Debug Log Output

As `lmgrd` and its vendor daemons run for a period of time, the volume of this output increases. As it gets older, the value of the debug log output decreases; therefore, it may be necessary for you to separate old debug log output from current output; either archive or delete the old output.

For performance, it is suggested that each debug log file be on a disk that is local to the machine that is running `lmgrd` and its vendor daemons. However, if the debug log file must be on a remotely-mounted disk and you find that the license server system is too slow, start `lmgrd` with the `-nfs_log` option to improve performance.

See “[Debug Log Messages](#)” for a description of the debug log output format.

Capturing Debug Log Output for a License Server System

By default, `lmgrd` and the vendor daemons it manages write debug log output to standard out. To put this debug log output in a file, either redirect the output of the license server system to a file or start `lmgrd` with the `-l debug_log_path` option.

Capturing Debug Log Output for a Particular Vendor Daemon

The debug log output from different vendor daemons controlled by the same license server system can be written to their own files (v8.0+ vendor daemon). There are two ways to do this:

- Add the `DEBUGLOG` line to the options file for each vendor daemon. See “[DEBUGLOG](#)” for more details.
- Invoke `lmswitch` on the vendor daemon. See “[lmswitch](#)” for more details.

Note that `lmgrd` writes its own debug log output to standard out.

Redirecting Debug Log Output for a Running Vendor Daemon

It is possible to redirect the debug log output for a particular vendor daemon to a different file. There are two ways to do this:

- Change the `DEBUGLOG` line to the options file for the vendor daemon and reread its options file by invoking `lmreread`. See “[DEBUGLOG](#)” for more details.
- Invoke `lmswitch` on the vendor daemon. See “[lmswitch](#)” for more details.

Limiting Debug Log Output for a Vendor Daemon

By default, debug log output contains all events. To limit the events that are logged for a particular vendor daemon, add a `NOLOG` line to the options file of that vendor daemon. See “[NOLOG](#)” for more details. One of the reasons you may want to limit the events that are logged is to reduce the size of the debug log output.

Debug Log Messages

FLEXnet Licensing processes generate debug log files in the following format:

hh:mm:ss (daemon) message

where:

<i>hh:mm:ss</i>	Time that the message was logged.
<i>daemon</i>	Either <code>lmgrd</code> or the vendor daemon name. In the case where a single copy of the daemon cannot handle all of the requested licenses, an optional “_” followed by a number indicates that this message comes from a forked daemon.
<i>message</i>	The text of the message.

The debug log files can be used to:

- Diagnose configuration problems
- Diagnose daemon software errors

Note A debug log file cannot be used for usage reporting with FLEXnet Manager.

Informational Messages

Message	Description
Connected to <i>host</i>	This daemon is connected to its peer on <i>host</i> .
CONNECTED, master is <i>host</i>	The license daemons log this message when a quorum is up and everyone has selected a master.
DENIED: <i>num_lic</i> <i>feature</i> to <i>user</i>	<i>user</i> was denied access to <i>num_lic</i> licenses of <i>feature</i> .
EXITING DUE TO SIGNAL <i>nnn</i> EXITING with code <i>nnn</i>	All daemons list the reason that the daemon has exited.
EXPIRED: <i>feature</i>	<i>feature</i> has passed its expiration date.
IN: “ <i>feature</i> ” <i>user</i> (<i>num_lic</i> licenses)	<i>user</i> has checked in <i>num_lic</i> licenses of <i>feature</i> .
Lost connection to <i>host</i>	A daemon can no longer communicate with its peer on node <i>host</i> , which can cause the clients to have to reconnect, or cause the number of daemons to go below the minimum number, in which case clients may start exiting. If the license daemons lose the connection to the master, they kill all the vendor daemons; vendor daemons shut themselves down.
Lost quorum	The daemon lost quorum, so it processes only connection requests from other daemons.
MULTIPLE <i>vendor</i> servers running. Please kill, and restart license daemon.	The license server manager, <i>lmgrd</i> , has detected that multiple vendor daemons for <i>vendor</i> are running. Shutdown <i>lmgrd</i> and all <i>vendor</i> daemons with the <i>lmdown</i> utility and then restart <i>lmgrd</i> .
OUT: “ <i>feature</i> ” <i>user</i> (<i>num_lic</i> licenses)	<i>user</i> has checked out <i>num_lic</i> licenses of <i>feature</i> .
RESERVE <i>feature</i> for USER <i>user</i> RESERVE <i>feature</i> for HOST <i>host</i>	A license of <i>feature</i> is reserved for either <i>user</i> or <i>host</i> .
REStarted <i>vendor</i> (internet port <i>nnn</i>)	Vendor daemon <i>vendor</i> was restarted at TCP/IP port <i>nnn</i> .

Appendix G - The Debug Log File
Debug Log Messages

Message	Description
Retrying socket bind (address in use)	The license server systems try to bind their sockets for approximately six minutes if they detect “address in use” errors.
Selected (EXISTING) master <i>host</i> .	This license daemon has selected an existing master <i>host</i> as the master.
SERVER shutdown requested.	A daemon was requested to shut down via a user-generated <code>kill</code> command.
Server started on <i>host</i> for: “ <i>feature_list</i> ”	A (possibly new) server was started for the features listed.
Shutting down <i>vendor</i>	The license server manager is shutting down the vendor daemon <i>vendor</i> .
SIGCHLD received. Killing child servers.	A vendor daemon logs this message when a shutdown was requested by the license daemon.
Started <i>vendor</i>	The license server manager logs this message whenever it starts a new vendor daemon.
Trying to connect to <i>host</i>	The daemon is attempting a connection to <i>host</i> .

Configuration Problem Messages

Message	Description
<i>host</i> : Not a valid server host, exiting	This daemon was run on an invalid host name.
<i>host</i> : Wrong hostid, exiting	The hostid is wrong for <i>host</i> .
BAD CODE for <i>feature</i>	The specified feature name has a bad license key or signature. It was probably typed in wrong, or modified by the end user.
CANNOT OPEN options file <i>file</i>	The options file specified in the license file could not be opened.
Couldn't find a master	The daemons could not agree on a master.
License daemon: lost all connections	This message is logged when all the connections to a server are lost, which often indicates a network problem.
Lost lock, exiting Error closing lock file Unable to re-open lock file	The vendor daemon has a problem with its lock file, usually because of an attempt to run more than one copy of the daemon on a single node. Locate the other daemon that is running via a <code>ps</code> command, and kill it with <code>kill -9</code> .
No DAEMON line for <i>vendor</i>	The license file does not contain a DAEMON or VENDOR line for <i>vendor</i> .
No DAEMON lines, exiting	The license daemon logs this message if there are no DAEMON or VENDOR lines in the license file. Because there are no vendor daemons to start, there is nothing for the license daemon to do.
No features to serve!	A vendor daemon found no features to serve. This could be caused by a corrupted or incorrectly entered license file.
UNSUPPORTED FEATURE request: <i>feature</i> by <i>user</i>	The user has requested a feature that this vendor daemon does not support. This can happen for a number of reasons: the license file is bad, the feature has expired, or the daemon is accessing the wrong license file.

Message	Description
Unknown host: <i>host</i>	The host name specified on a SERVER line in the license file does not exist in the network database (probably <i>/etc/hosts</i>).

Daemon Software Error Messages

Message	Description
accept: message	An error was detected in the “accept” system call.
Can’t allocate server table space	A malloc error. Check swap space.
Connection to <i>host</i> TIMED OUT	The daemon could not connect to <i>host</i> .
Illegal connection request to <i>vendor</i>	A connection request was made to <i>vendor</i> , but this vendor daemon is not <i>vendor</i> .
read: error message	An error in a “read” system call was detected.
select: message	An error in a “select” system call was detected. This is usually a sign of a system networking failure.
Server exiting	The server is exiting. This is normally due to an error.

IPv6 Support in FLEXnet Licensing

H

Internet Protocol version 6 (IPv6) is a suite of standard protocols that is the next generation of network layer protocols for the internet. This chapter describes IPv6 support in FLEXnet Licensing. FLEXnet Licensing can support a heterogeneous mixture of IPv4-only, IPv6-only, and dual IPv4/IPv6 machines in both client (machine on which the FLEXenabled product resides) and server (machine on which the FLEXnet license server system resides) roles.

An IPv6 address can be used as a FLEXnet Licensing hostid in these contexts within the FLEXnet Licensing paradigm:

- In a license file SERVER line to specify the license server system machine
An IPv6 address is used as a hostid to define which machine is authorized to run a license server system that serves licenses to your publisher's FLEXenabled product. See [“SERVER Lines”](#) for information on how IP addresses can be used in SERVER lines.
- In license file FEATURE and INCREMENT lines
An IPv6 address is used to lock the feature to a particular machine. See [Appendix A, “Hostids for FLEXnet Licensing-Supported Platforms,”](#) for more information on how IP addresses can be used as hostids.
- In an options file to specify host restrictions
An IPv6 address can be used in a HOST type specification with these keywords to specify the restriction: EXCLUDE, EXCLUDEALL, EXCLUDE_BORROW, INCLUDE, INCLUDEALL, INCLUDE_BORROW, MAX, and RESERVE. Additionally, it can be used in a HOST_GROUP keyword. See [“Feature Specification”](#) for more information on how IP addresses can be used in this context.

FLEXnet Licensing IPv6 Support

In order for you to take advantage of IPv6 support in FLEXnet Licensing, you need to determine the level of support your publisher provides. Consult [Table H-1](#) for the possible client (machine on which the FLEXenabled product resides) and server (machine on which the FLEXnet license server system resides) combinations supported by FLEXnet Licensing. Of these supported configurations, find out from your publisher the ones that he specifically supports.

Table H-1: Client/Server Compatibility Matrix

		FLEXnet License Server Machine			
		IPv4-only	Dual IPv4/IPv6 Stack	IPv6-only	No server
FLEXenabled Application Machine	IPv4-only	Use IPv4 addresses only.	Use IPv4 addresses only.	Not supported.	Use IPv4 addresses only.
	Dual Stack, uses IPv4 address only		Use IPv4, IPv6, or both addresses.		
	Dual Stack, uses both IPv4 and IPv6 addresses			Use IPv6 addresses only.	Use IPv4, IPv6, or both addresses.
	Dual Stack, uses IPv6 address only	Not supported.	Use IPv6 addresses only.		
	IPv6-only				

IPv6-Aware FLEXnet Licensing Components

Your publisher needs to provide IPv6-aware components. These components are used on IPv6-only and dual IPv4/IPv6 machines; they will not work on IPv4-only machines. Consult your publisher's installation instructions for specific details on how these components are packaged.

What to Tell Your Publisher

You need to survey your environment to determine your IPv4-only, IPv6-only, and dual IPv4/IPv6 machines that are involved in your FLEXnet Licensing ecosystem. Provide your publisher with the hostids for those machines you plan to host the FLEXenabled product and those you plan to host the FLEXnet licensor server system.

With this information, your publisher can create license certificates locked to the appropriate machines.

Using IPv6 Addresses in the Options File

Both IPv6 and IPv4 addresses can be used in the HOST_GROUP keyword and options file type specifications. To specify restrictions for dual IPv4/IPv6 machines, consider specifying both addresses. The wildcard character, "*", may be used in place of an entire field or on a byte-by-byte basis to specify a range of addresses without having to list them all. See ["Type Specification"](#)

for further information.



FLEXNET LICENSING VERSION NOTES

- IPv6 address support introduced in FLEXnet Licensing v10.8.
-

Appendix H - IPv6 Support in FLEXnet Licensing Using IPv6 Addresses in the Options File



FLEXnet Licensing Versions

Version Compatibility with FLEXnet Licensing Components

In general, always use the latest `lmgrd` and `lmutil/LMTOOLS`, which are available from www.macrovision.com, and you'll automatically enjoy many of the enhancements available in the most recent versions of FLEXnet Licensing. However, some enhancements require a vendor daemon built with a newer version of FLEXnet Licensing, and yet others require a FLEXenabled application built with a newer version of FLEXnet Licensing. Contact your software vendor for the most current version of their vendor daemon.

The rules about FLEXnet Licensing version compatibility are summarized as:

- Version of `lmutil/LMTOOLS` must be \geq
- Version of `lmgrd`, which must be \geq
- Version of vendor daemon, which must be \geq
- Version of the client library linked to the FLEXenabled application, which must be \geq
- Version of license file format

Except for the license file, use `lmver` to discover the version of all these FLEXnet Licensing components. For the vendor daemon, `lmgrd`, and `lmutil`, you can also use the `-v` argument to print the version.

How to Tell the License File Version

The following rules apply to individual `FEATURE`, `INCREMENT` or `UPGRADE` lines. It's possible to have a mix of versions in a single file. Only the features that a particular application checks out determine the version of the license for that feature.

Version 2	Blank quotes or a quoted string at the end of the <code>FEATURE</code> line.
\geq Version 3	<code>INCREMENT</code> or <code>UPGRADE</code> line.
\geq Version 4	<code>OVERDRAFT</code> , <code>DUP_GROUP</code> , <code>INTERNET</code> , or <code>PACKAGE</code> appear.

>= Version 5	SUPERSEDE, ISSUED, USER_BASED, HOST_BASED, or SN appear.
>= Version 6	START appears.
>= Version 7.1	SIGN= keyword appears.
>= Version 8	BORROW, FLOAT_OK, and TS_OK appear.

Version Summary

v1.0—1988

First FLEXlm Release, containing all the basic FLEXlm features

v1.5—February 1990

First widely used version including DEMO

v2.1—March 1991

- Improved TIMEOUT support
- Improved ethernet hostid support

v2.21—November 1991

- Added support for many platforms and some platform-specific improvements, such as hostid
- Hostid ANY added

v2.26—March 1992 (Used only by Sun)

- Added license lingering

v2.4—December 1992

- Added “use-all-feature-lines” capability for incremental license distribution
- Enhanced vendor customization routines
- Enhanced end-user options file
- Added new hostid types: USER, HOSTNAME, and DISPLAY
- Added `port@host` to locate license file —downloads license file from server

v2.61—March 1993 (Used only by Sun)

- Added INCREMENT and UPGRADE lines to license file

v3.0—May 1994

- INCREMENT and UPGRADE behavior changed and improved
- Added UDP protocol support
- Added `uname -i` hostid for HP

- Added multiple jobs for enhanced support of `LM_LICENSE_FILE` environment variable as a license-file list
- New, optional license file format with *keyword=value* syntax for optional new features, including: `asset_info`, `ISSUER`, and `NOTICE`, “\” license file continuation character, 2048 character limit per feature

v4.0—December 1994

- Removed use of floating point, for enhanced reliability
- `FEATURE` line additions: `ck`, `OVERDRAFT`, `DUP_GROUP`, `INTERNET` hostid
- `PACKAGE` line
- License Finder
- `lmdiag` and `FLEXLM_DIAGNOSTICS` for end-user diagnostics

v4.1—May 1995

- Performance improvements and new platform support

v4.1—Patch Release 6, October 1995

- Windows patch release for Windows 95 with various performance improvements

v5.0—March 1996

- Improved *port@host* behavior—FLEXenabled application doesn't read license file
- Automatic *port@host* via `USE_SERVER` line in license file
- Hostid lists—lock a feature to several hostids
- New `FEATURE` attributes: `SN` (serial number), `USER_BASED`, `HOST_BASED`, `MINIMUM`, `SUPERSEDE`, `ISSUED` (issued date), `CAPACITY` (charging based on system capacity)
- Optional avoidance of NIS and DNS via IP address instead of host name
- Improved report log file format
- Server, upon startup, notifies of licenses that expire within two weeks
- Improved end-user options file functionality

v5.11—February 1997

- `SUPERSEDE` lists, `PLATFORMS=` license attribute,
- new end-user options: `MAX`, `TIMEOUTALL`
- Windows control panel added
- Windows license generator `GENLIC` added

v5.12—April 1997

- Performance improvements and new platform support

v6.0—September 1997

- `lmgrd` can read multiple license files

- FLEXlm license directory support: *.lic automatically used
- License files require no editing for use at the end-user site
- Optional path on DAEMON/VENDOR line; \$PATH environment variable used
- Decimal license format, with `lminstall` utility for typing in licenses
- FEATURE lines are shorter, easier to understand and type in
- PACKAGE lines can be shipped in separate files that never require user editing
- Default TCP/IP port numbers make SERVER line port number optional
- Default end-user options file path
- `this_host` host name supported on SERVER line
- `VENDOR_LICENSE_FILE` supported (e.g., `GSI_LICENSE_FILE`)
- `@host` supported where default port numbers are used
- Windows only: user prompted for license file or license server name
- License files are optionally case insensitive
- `lmdown` and `lmreread` accept `-vendor vendor` argument
- `START=dd-mm-yy` optional license attribute

v6.1—June 1998

- Performance improvements

v7.0—August 1999

- License Certificate Manager support for automatic license fulfillment
- Support for “try-before-you-buy” licensing
- License file handles inserted newlines from emailers
- License lines automatically optimally sorted
- Improved LMTOOLS interface for Windows
- `lmgrd`, when run at command line on Windows, runs in background by default
- Improved three-server redundancy reliability (v7.0 vendor daemon and `lmgrd`)
- `lmreread` and `lmdown` take `-all` argument to shut down or reread all `lmgrds`
- Support registry (Windows) and `$HOME/.flexlmrc` (UNIX) for FLEXlm environment variables
- Automatically install license path in registry or `$HOME/.flexlmrc` after successful checkout
- Options support for `LM_PROJECT` with `PROJECT`
- Performance improvements, especially for Windows NT
- Intel Pentium III CPU-ID (v7.0d+, November 1999)

v7.1—August 2000

- Security enhancements

- SIGN= keyword in license
- lmnewlog utility (v7.1+ vendor daemon)

v7.2—December 2000

- Performance enhancements

v8.0—October 2001

- lmborrow (v8.0+ components), lmpath (v8.0+ vendor daemon), lmswitch (v8.0+ vendor daemon) utilities
- lmreread rereads end-user options file and SERVER host name
- License borrowing with BORROW keyword

v8.1—January 2002

- CRO Security enhancements

v8.2—August 2002

- Support added for Windows XP compliancy

v8.3—October 2002

- Support added for returning borrowed licenses early

v8.4—January 2003

- Support for reserved package suites

v9.0—March 2003

- Support for COMPOSITE= hostid type

v9.2—July 2003

- Options file keywords added: GROUPEASEINSENSITIVE and MAX_BORROW_HOURS

v9.5—November 2004

- New environment variable: LM_UTIL_CASE_SENSITIVE

v10.0—April 2004

- Released as FLEXnet Licensing
- Support for fully qualified domain names

v10.1—November 2004

- Additional FLEXid driver support for USB dongles

v10.8—April 2005

- IPv6 address support for hostids
- Enhanced three-server redundant configuration support
- Support for common vendor daemons

Third Party License Agreements

Part of the software shipped with the FLEXnet Licensing toolkit to enable the FLEXnet Fulfillment API is protected by the following third party copyrights:

- [The Apache Software Foundation](#)

This product includes software developed by the Apache Software Foundation (<http://www.apache.org/>). Copyright (c) 2000 The Apache Software Foundation. All rights reserved.

- [The Open SSL Project](#)

This product includes software developed by the OpenSSL Project for use in the OpenSSL Toolkit. (<http://www.openssl.org/>). Copyright (c) 1998-2003 The Open SSL Project. All rights reserved.

- [Eric Young](#)

This product includes cryptographic software written by Eric Young (eyay@cryptsoft.com). Copyright (c) 1995-1998 Eric Young (eyay@cryptsoft.com). All rights reserved.

- [Genivia Inc.](#)

Part of the software embedded in this product is gSOAP software. Copyright (c) 2001-2003 Robert A. van Engelen, Genivia Inc. All rights reserved.

The Apache Software Foundation

Version 1.1 Copyright (c) 2000 The Apache Software Foundation. All rights reserved.

Redistribution and use in source and binary forms, with or without modification, are permitted provided that the following conditions are met:

1. Redistributions of source code must retain the above copyright notice, this list of conditions and the following disclaimer.
2. Redistributions in binary form must reproduce the above copyright notice, this list of conditions and the following disclaimer in the documentation and/or other materials provided with the distribution.
3. The end-user documentation included with the redistribution, if any, must include the following acknowledgment: “This product includes software developed by the Apache Software Foundation (<http://www.apache.org/>).” Alternately, this acknowledgment may appear in the software itself, if and wherever such third-party acknowledgments normally appear.
4. The names “Apache” and “Apache Software Foundation” must not be used to endorse or promote products derived from this software without prior written permission. For written permission, please contact apache@apache.org.
5. Products derived from this software may not be called “Apache”, nor may “Apache” appear in their name, without prior written permission of the Apache Software Foundation.

THIS SOFTWARE IS PROVIDED “AS IS” AND ANY EXPRESSED OR IMPLIED WARRANTIES, INCLUDING, BUT NOT LIMITED TO, THE IMPLIED WARRANTIES OF MERCHANTABILITY AND FITNESS FOR A PARTICULAR PURPOSE ARE DISCLAIMED. IN NO EVENT SHALL THE APACHE SOFTWARE FOUNDATION OR ITS CONTRIBUTORS BE LIABLE FOR ANY DIRECT, INDIRECT, INCIDENTAL, SPECIAL, EXEMPLARY, OR CONSEQUENTIAL DAMAGES (INCLUDING, BUT NOT LIMITED TO, PROCUREMENT OF SUBSTITUTE GOODS OR SERVICES; LOSS OF USE, DATA, OR PROFITS; OR BUSINESS INTERRUPTION) HOWEVER CAUSED AND ON ANY THEORY OF LIABILITY, WHETHER IN CONTRACT, STRICT LIABILITY, OR TORT (INCLUDING NEGLIGENCE OR OTHERWISE) ARISING IN ANY WAY OUT OF THE USE OF THIS SOFTWARE, EVEN IF ADVISED OF THE POSSIBILITY OF SUCH DAMAGE.

This software consists of voluntary contributions made by many individuals on behalf of the Apache Software Foundation. For more information on the Apache Software Foundation, please see <http://www.apache.org/>. Portions of this software are based upon public domain software originally written at the National Center for Supercomputer Applications, University of Illinois, Urban-Champaign.

The Open SSL Project

Copyright (c) 1998-2003 The OpenSSL Project. All rights reserved.

Redistribution and use in source and binary forms, with or without modification, are permitted provided that the following conditions are met:

1. Redistributions of source code must retain the above copyright notice, this list of conditions and the following disclaimer.
2. Redistributions in binary form must reproduce the above copyright notice, this list of conditions and the following disclaimer in the documentation and/or other materials provided with the distribution.
3. All advertising materials mentioning features or use of this software must display the following acknowledgment: “This product includes software developed by the OpenSSL Project for use in the OpenSSL Toolkit. (<http://www.openssl.org/>)”
4. The names “OpenSSL Toolkit” and “OpenSSL Project” must not be used to endorse or promote products derived from this software without prior written permission. For written permission, please contact openssl-core@openssl.org.
5. Products derived from this software may not be called “OpenSSL” nor may “OpenSSL” appear in their names without prior written permission of the OpenSSL Project.
6. Redistributions of any form whatsoever must retain the following acknowledgment: “This product includes software developed by the OpenSSL Project for use in the OpenSSL Toolkit (<http://www.openssl.org/>)”

THIS SOFTWARE IS PROVIDED BY THE OPENSOURCE PROJECT “AS IS” AND ANY EXPRESSED OR IMPLIED WARRANTIES, INCLUDING, BUT NOT LIMITED TO, THE IMPLIED WARRANTIES OF MERCHANTABILITY AND FITNESS FOR A PARTICULAR PURPOSE ARE DISCLAIMED. IN NO EVENT SHALL THE OPENSOURCE PROJECT OR ITS CONTRIBUTORS BE LIABLE FOR ANY DIRECT, INDIRECT, INCIDENTAL, SPECIAL, EXEMPLARY, OR CONSEQUENTIAL DAMAGES (INCLUDING, BUT NOT LIMITED TO, PROCUREMENT OF SUBSTITUTE GOODS OR SERVICES; LOSS OF USE, DATA, OR PROFITS; OR BUSINESS INTERRUPTION) HOWEVER CAUSED AND ON ANY THEORY OF LIABILITY, WHETHER IN CONTRACT, STRICT LIABILITY, OR TORT (INCLUDING NEGLIGENCE OR OTHERWISE) ARISING IN ANY WAY OUT OF THE USE OF THIS SOFTWARE, EVEN IF ADVISED OF THE POSSIBILITY OF SUCH DAMAGE.

This product includes cryptographic software written by Eric Young (eay@cryptsoft.com).
This product includes software written by Tim Hudson (tjh@cryptsoft.com).

Eric Young

Copyright (c) 1995-1998 Eric Young (eay@cryptsoft.com) All rights reserved.

This package is an SSL implementation written by Eric Young (eay@cryptsoft.com). The implementation was written so as to conform with Netscape’s SSL. This library is free for commercial and non-commercial use as long as the following conditions are adhered to. The following conditions apply to all code found in this distribution, be it the RC4, RSA, leak, DES, etc., code; not just the SSL code. The SSL documentation included with this distribution is covered by the same copyright terms except that the holder is Tim Hudson (tjh@cryptsoft.com). Copyright remains Eric Young's, and as such any Copyright notices in the code are not to be removed. If this package is used in a product, Eric Young should be given attribution as the author of the parts of the library used. This can be in the form of a textual message at program startup or in documentation (online or textual) provided with the package. Redistribution and use in source and binary forms, with or without modification, are permitted provided that the following conditions are met:

1. Redistributions of source code must retain the copyright notice, this list of conditions and the following disclaimer.
2. Redistributions in binary form must reproduce the above copyright notice, this list of conditions and the following disclaimer in the documentation and/or other materials provided with the distribution.
3. All advertising materials mentioning features or use of this software must display the following acknowledgement: “This product includes cryptographic software written by Eric Young (eay@cryptsoft.com)” The word “cryptographic” can be left out if the routines from the library being used are not cryptographic related :-).
4. If you include any Windows specific code (or a derivative thereof) from the apps directory (application code) you must include an acknowledgement: “This product includes software written by Tim Hudson (tjh@cryptsoft.com)”

THIS SOFTWARE IS PROVIDED BY ERIC YOUNG “AS IS” AND ANY EXPRESS OR IMPLIED WARRANTIES, INCLUDING, BUT NOT LIMITED TO, THE IMPLIED WARRANTIES OF MERCHANTABILITY AND FITNESS FOR A PARTICULAR PURPOSE ARE DISCLAIMED. IN NO EVENT SHALL THE AUTHOR OR CONTRIBUTORS BE LIABLE FOR ANY DIRECT, INDIRECT, INCIDENTAL, SPECIAL, EXEMPLARY, OR CONSEQUENTIAL DAMAGES (INCLUDING, BUT NOT LIMITED TO, PROCUREMENT OF SUBSTITUTE GOODS OR SERVICES; LOSS OF USE, DATA, OR PROFITS; OR BUSINESS INTERRUPTION) HOWEVER CAUSED AND ON ANY THEORY OF LIABILITY, WHETHER IN CONTRACT, STRICT LIABILITY, OR TORT (INCLUDING NEGLIGENCE OR OTHERWISE) ARISING IN ANY WAY OUT OF THE USE OF THIS SOFTWARE, EVEN IF ADVISED OF THE POSSIBILITY OF SUCH DAMAGE.

The licence and distribution terms for any publicly available version or derivative of this code cannot be changed. i.e. this code cannot simply be copied and put under another distribution licence [including the GNU Public Licence.]

Genivia Inc.

Part of the software embedded in this product is gSOAP software.

Portions created by gSOAP are Copyright (C) 2001-2003 Robert A. van Engelen, Genivia inc. All Rights Reserved.

THE SOFTWARE IN THIS PRODUCT WAS IN PART PROVIDED BY GENIVIA INC. AND ANY EXPRESS OR IMPLIED WARRANTIES, INCLUDING, BUT NOT LIMITED TO, THE IMPLIED WARRANTIES OF MERCHANTABILITY AND FITNESS FOR A PARTICULAR PURPOSE ARE DISCLAIMED. IN NO EVENT SHALL THE AUTHOR BE LIABLE FOR ANY DIRECT, INDIRECT, INCIDENTAL, SPECIAL, EXEMPLARY, OR CONSEQUENTIAL DAMAGES (INCLUDING, BUT NOT LIMITED TO, PROCUREMENT OF SUBSTITUTE GOODS OR SERVICES; LOSS OF USE, DATA, OR PROFITS; OR BUSINESS INTERRUPTION) HOWEVER CAUSED AND ON ANY THEORY OF LIABILITY, WHETHER IN CONTRACT, STRICT LIABILITY, OR TORT (INCLUDING NEGLIGENCE OR OTHERWISE) ARISING IN ANY WAY OUT OF THE USE OF THIS SOFTWARE, EVEN IF ADVISED OF THE POSSIBILITY OF SUCH DAMAGE.

Index

A

- about this manual ix
- ANY hostid 103
- asdfasdf 157
- asset_info 115
- AUTH 112, 118

B

- BORROW_LOWWATER 50
- borrowing 96

C

- commands x
- COMPOSITE
 - hostid 103
- concurrent license 26
- configuring FLEXnet licensing files 19
- conventions x
- converting license formats 81
- creating options file 45

D

- DAEMON line 111
- debugging license server system 121
- DEBUGLOG 50
- decimal format licenses 81
- DEMO hostid 103
- deployed FLEXnet Licensing files
 - FLEXid drivers
 - Mac OS X 18
 - Red Hat Linux 18
 - SuSE Linux 18
 - Windows 18

- lmgr10.dll 18

- lmgrd 17

- lmtools.exe 17

- lmutil 17

- vendor daemon 17

- diagnosing checkout problems
 - troubleshooting
 - checkouts 78

- disabling

- lmdown 66

- lmremove 66

- DISPLAY

- hostid 103

- type 49

- dist_info 115

- DUP_GROUP 113

E

- enabling report log 59

- environment variables

- FLEXLM_BATCH 125

- FLEXLM_DIAGNOSTICS 126

- FLEXLM_TIMEOUT 126

- LM_BORROW 126

- LM_LICENSE_FILE 127

- LM_PROJECT 126

- LM_SERVER_HIGHEST_FD 126

- setting 125

- VENDOR_LICENSE_FILE 127

- error code

- descriptions 130

- format 129

- EXCLUDE 51

EXCLUDE_BORROW 51
EXCLUDEALL 52
expiration date 112

F

feature
 version 112
FEATURE line 111
 asset_info 115
 AUTH 112
 dist_info 115
 DUP_GROUP 113
 expiration date 112
 feature version 112
 FLOAT_OK 113
 HOST_BASED 114
 HOSTID 113
 ISSUED 114
 ISSUER 114
 license count 112
 NOTICE 114
 order of precedence 115
 OVERDRAFT 114
 PLATFORMS 114
 serial number 114
 SIGN 112
 signature 112
 SN 114
 sort 115
 sorting order 115
 START 114
 SUPERSEDE 114
 syntax 116
 TS_OK 114
 USER_BASED 115
 user_info 115
 vendor daemon name 112
 vendor_info 115
 VENDOR_STRING 115
Feature line
 SUITE_DUP_GROUP 114
FLEXid drivers
 Mac OS X 18

Red Hat Linux 18
SuSE Linux 18
Windows 18

FLEXid with FLOAT_OK 94
FLEXLM_BATCH 125
FLEXLM_DIAGNOSTICS 122
 level 1 122
 level 2 122
 level 3 123
FLEXLM_TIMEOUT 126
FLEXnet Licensing
 components 13
 configuration 19
 getting started checklist 19
 installing FLEXenabled applications 19
FLEXnet Licensing Programming and Reference
 Guide ix
FLEXnet Manager 59
FLOAT_OK 113
floating license 26

G

GROUP type 54
GROUPCASEINSENSITIVE 54

H

HOST type 49
host, SERVER line 106
HOST_BASED 114
HOST_GROUP type 55
HOSTID 113
hostid
 ANY 103
 COMPOSITE 103
 DEMO 103
 DISPLAY 103
 HOSTNAME 103
 ID 104
 INTERNET 104
 SERVER line 106
 special 103
 USER 104
HOSTNAME hostid 103

I

- ID hostid 104
- INCLUDE 55
- INCLUDE_BORROW 56
- INCLUDEALL 56
- INCREMENT line 111
- installing FLEXenabled applications 19
- INTERNET
 - hostid 104
 - type 49
- IPv6 address support 147
- ISSUED 114
- ISSUER 114

L

- license
 - borrowing 96
 - concurrent 26
 - floating 26
 - mixed 27
 - mobile 93
 - network license 26
 - node-locked 27
- license agreements, third party 156
- license count 112
- license directory 67, 68
- license file
 - compatibility between different versions 36
 - DAEMON line 111
 - decimal format 119
 - expected location 16
 - FEATURE line 111
 - format 25
 - how to combine 35
 - INCREMENT line 111
 - LM_LICENSE_FILE 16
 - lminstall 81
 - order of lines 28, 120
 - overview 16
 - PACKAGE line 116
 - rereading after an update 85
 - SERVER lines 36
 - specifying location 23
 - types 26
 - UPGRADE line 119
 - USE_SERVER line 111
 - VENDOR line 109
 - with multiple servers 67, 108
- license pool 48, 112
- license rehosting 93
- license request process 18
- license server
 - debugging 121
 - deciding number of nodes 41
 - disk space used 40
 - install as Windows service 91
 - sockets used 39
- license server manager 15, 65
- license-file list 33
- license-file list redundancy 41
- LINGER 57
- LM_BORROW 126
- LM_LICENSE_FILE 127
 - to reference multiple files 16
- LM_PROJECT 126
 - reporting on project 59
 - use in options file 49
- LM_SERVER_HIGHEST_FD 126
- lmdiag
 - syntax 78
 - troubleshooting 78
- lmdown
 - disabling 66
 - restricting access 66
 - syntax 79
- lmgrd
 - and redundant servers 67, 108
 - compatibility between versions 65
 - debug log file 142
 - memory usage 40
 - overview 15, 65
 - shutting down 79
 - starting 65, 67
 - starting automatically at boot time 20
 - starting debug log 65
 - syntax 65

- use latest 151
- lmhostid
 - syntax 80
- lmhostid, syntax 80
- lminstall
 - license file format 81
 - syntax 81
- lmnewlog, syntax 82
- lmremove
 - disabling 66
 - restricting access 66
 - syntax 84
- lmreread
 - restricting access 66
 - syntax 85
- lmstat
 - output for lmreread 86
 - syntax 86
- lmswitch, syntax 88
- lmswitchr, syntax 89
- LMTOOLS 18, 90
- lmutil
 - lmdiaq 78
 - lmdown 79
 - lmhostid 80
 - lminstall 81
 - lmnewlog 82
 - lmremove 84
 - lmreread 85
 - lmstat 86
 - lmswitch 88
 - lmswitchr 89
 - lmver 90
- lmver, syntax 90

M

- MAX 57
- MAX_BORROW_HOURS 58
- MAX_OVERDRAFT 58
- memory usage, daemons 40
- mixed licenses 27
- mobile licensing
 - borrowing 96

- FLEXid with FLOAT_OK 94
- node-locked to FLEXid 93
- node-locked to laptop 93
- node-locked to user name 99
- prepaid license pool fulfillment 99

N

- network bandwidth and FLEXnet Licensing 40
- network license 26
- node-locked license 27
- NOLOG 59
- NOTICE 114

O

- options file
 - BORROW_LOWWATER 50
 - creating 45
 - DEBUGLOG 50
 - DISPLAY type 49
 - examples 62
 - EXCLUDE 51
 - EXCLUDE_BORROW 51
 - EXCLUDEALL 52
 - GROUP type 54
 - GROUPCASEINSENSITIVE 54
 - HOST type 49
 - HOST_GROUP type 55
 - INCLUDE 55
 - INCLUDE_BORROW 56
 - INCLUDEALL 56
 - INTERNET type 49
 - IPv6 addresses 148
 - LINGER 57
 - MAX 57
 - MAX_BORROW_HOURS 58
 - MAX_OVERDRAFT 58
 - NOLOG 59
 - overview 20
 - PROJECT type 49
 - read by vendor daemon 61
 - REPORTLOG 59
 - required for HOST_BASED 114
 - required for USER_BASED 115

- RESERVE 60
- rules of precedence 62
- TIMEOUT 61
- TIMEOUTALL 61
- type argument 49
- USER type 49

- options file path 110
- OPTIONS=SUITE 117
- OPTIONS=SUITE_RESERVED 118
- order of lines in license file 28, 120
- OVERDRAFT 114

P

- PACKAGE line 116
 - AUTH 118
 - OPTIONS=SUITE 117
 - OPTIONS=SUITE_RESERVED 118
 - SIGN 118
 - signature 118
 - syntax 117
- package suite 117
- PLATFORMS 114
- port number
 - server default range 107
 - SERVER line 107
 - VENDOR line 110
- precedence or FEATURE lines 115
- preface ix
- PROJECT type 49

R

- redundant servers
 - selecting server nodes 41
 - separate license files 67
 - SERVER lines 106
 - three-server redundancy 42
 - via license-file list 41
- rehosting, license 93
- remote disks, guidelines for using 40
- report log file 40
- reporting on project 59
- REPORTLOG 59
- RESERVE 60

- restricting access
 - lmdown 66
 - lmremove 66
 - lmreread 66

S

- SERVER line 106
 - combining license files 36
 - default port numbers 107
 - host 106
 - hostid 106
 - port number 107
 - redundant servers 106
 - syntax 106
- setting environment variables 125
- SIGN 112, 118
- signature 112, 118
- SN 114
- sockets
 - number used by license server 39
- sort 115
- specifying location of license file 23
- START 114
- starting lmgrd 67
- status of license server 86
- SUITE_DUP_GROUP 114
- SUPERSEDE 114
- switching debug log
 - lmswitch 88
- switching report log
 - lmnewlog 82
 - lmswitchr 89

T

- term x
- third party license agreements 156
- three-server redundancy 42
- TIMEOUT 61
- TIMEOUTALL 61
- troubleshooting
 - with FLEXLM_DIAGNOSTICS 122
 - with lmdiag 78
- TS_OK 114

typographic conventions x

U

UPGRADE line, syntax 119

USE_SERVER line 111

USER hostid 104

USER type 49

USER_BASED 115

user_info 115

user_info= 114

V

vendor daemon

- and redundant servers 67, 108

- debug log file 142

- lmnewlog 82

- lmreread 85

- lmswitchr 89

- memory usage 40

- options file 46

- overview 15

- uncounted licenses 43

- VENDOR_LICENSE_FILE 127

- version compatibility 65

vendor daemon name

- FEATURE line 112

- VENDOR line 110

vendor daemon path 110

VENDOR line 109

- options file path 110

- port number 110

- vendor daemon name 110

- vendor daemon path 110

vendor.opt 46, 110

vendor_info 115

VENDOR_LICENSE_FILE 25, 127

VENDOR_STRING 115